

## LISSÉ Deck-mounted basin spout without pop-up waste - Brushed Light Gold







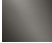
LISSÉ

13 700 845 Product version from 3/13/2017

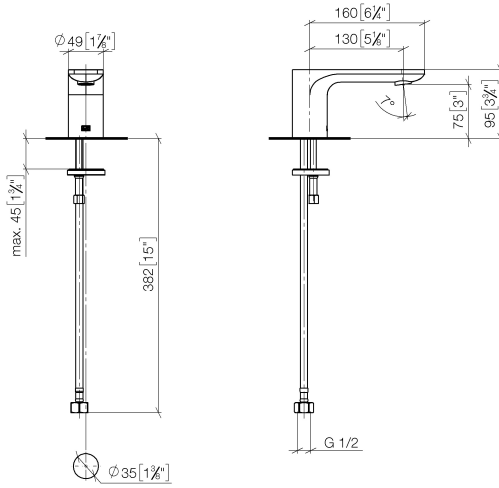


- 130mm projection
- fixed spout
- circular, air-enriched flow
- height of mixer 95 mm
- height up to aerator 75 mm
- hole diameter 35 mm
- 1/2" connection
- max. flow 5.7 l/min
- lead-free
- This product can help a building meet the requirements of Green Building Rating Systems, e.g. LEED®, BREEAM®, DGNB
- WRAS

For Touchfree control please order eSet Touchfree with temperature adjustment

|   |                       |               |
|---|-----------------------|---------------|
|  | Brushed Light Gold    | 13 700 845-27 |
|  | Chrome                | 13 700 845-00 |
|  | Brushed Platinum      | 13 700 845-06 |
|  | Dark Chrome           | 13 700 845-19 |
|  | Matte Black           | 13 700 845-33 |
|  | Brushed Chrome        | 13 700 845-93 |
|  | Brushed Dark Platinum | 13 700 845-99 |

mm [inches]



### Flow rate chart



### Codes & Standards

DIN 4109

ISO 3822

NSF372

NSF61

### Ü-Zeichen



LISSE Deck-mounted basin spout without pop-up waste - Brushed Light Gold

LISSE

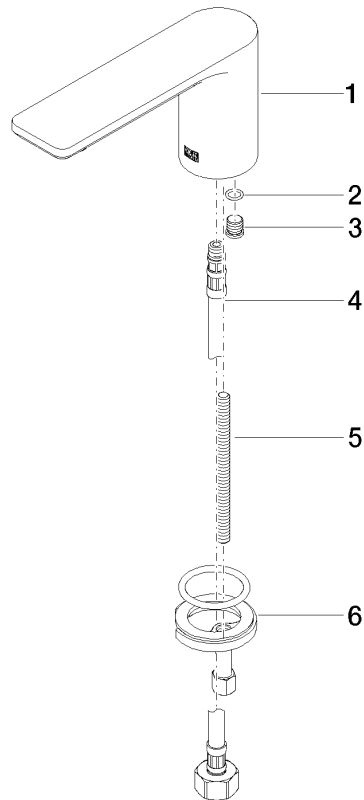
13 700 845 Product version from 3/13/2017

Certificates and sustainability

|        |           |         |
|--------|-----------|---------|
| LGA_29 | IAPMO_N-4 | IAPMO_6 |
|--------|-----------|---------|

13 700 845 Product version from 3/13/2017

Parts for other  
finishes can be found  
here: [Chrome](#)



## Spare parts list

| No. | Item Number        | Name       | Quantity used | Delivery time |
|-----|--------------------|------------|---------------|---------------|
| 4   | 04 30 04 019 00 90 | hose       | 1.00          | 2             |
| 6   | 04 30 11 038 75 90 | fixing set | 1.00          | 2             |
| 3   | 09 31 20 065 90    | plug       | 1.00          | 2             |
| 1   | 90 11 84 015 00-27 | spout      | 1.00          | 30            |
| 5   | 09 31 11 012 90    | pin        | 1.00          | 2             |
| 2   | 90 14 10 060 00 90 | seal       | 1.00          | 2             |