

## Wall-mounted basin spout without pop-up waste - Brushed Chrome

SERIES SPECIFIC

13 800 882 Product version from 3/13/2017

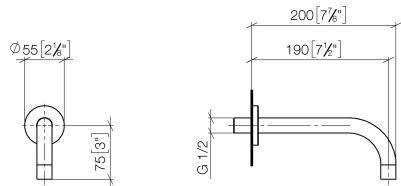


- 190mm projection
- fixed spout
- circular, air-enriched flow
- hole diameter 40 mm
- rosette Ø 60 mm
- 1/2" connection
- plug-link mounting
- max. flow 7 l/min
- lead-free
- This product can help a building meet the requirements of Green Building Rating Systems, e.g. LEED®, BREEAM®, DGNB
- WRAS

For Touchfree control please order eSet Touchfree with temperature adjustment

	Brushed Chrome	13 800 882-93
	Chrome	13 800 882-00
	Dark Chrome	13 800 882-19
	Brushed Durabrass (23kt Gold)	13 800 882-28
	Brushed Bronze	13 800 882-42
	Brushed Champagne (22kt Gold)	13 800 882-46
	Champagne (22kt Gold)	13 800 882-47
	Brushed Dark Platinum	13 800 882-99

mm [inches]



### Flow rate chart



### Codes & Standards

DIN 4109	ISO 3822	Scottish Water Byelaws	UK Water Supply Regulations
----------	----------	---------------------------	--------------------------------

### Ü-Zeichen



## Wall-mounted basin spout without pop-up waste - Brushed Chrome

SERIES SPECIFIC

13 800 882 Product version from 3/13/2017

Certificates and sustainability

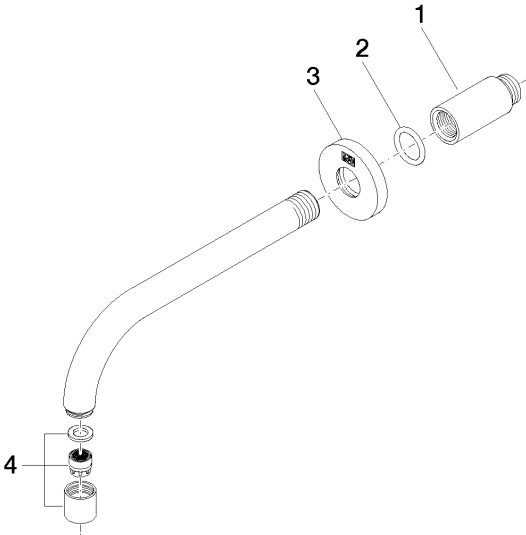
LGA\_29

WRAS\_240602

Parts for other

finishes can be found

here: [Chrome](#)



Spare parts list

No.	Item Number	Name	Quantity used	Delivery time
3	09 27 22 503-93	rosette	1.00	20
1	09 24 03 081 10 90	extension	1.00	2
4	90 23 01 019 00-93	aerator	1.00	20
2	90 14 10 026 00 90	seal	1.00	2