

## TARA Bath spout for wall mounting - Brushed Bronze

13 801 892 Product version from 4/1/2024



- 200mm projection
- circular normal flow
- rosette Ø 55 mm
- hole diameter 37 mm
- 1/2" connection
- max. flow 29 l/min at 3 bar flow pressure
- WRAS

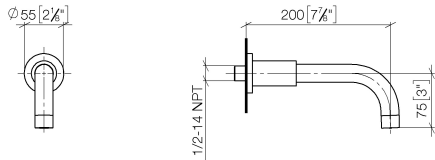
	Brushed Bronze	13 801 892-42
	Chrome	13 801 892-00
	Brushed Platinum	13 801 892-06
	Platinum	13 801 892-08
	Dark Chrome	13 801 892-19
	Brushed Light Gold	13 801 892-27
	Brushed Durabrass (23kt Gold)	13 801 892-28
	Matte Black	13 801 892-33
	Brushed Champagne (22kt Gold)	13 801 892-46
	Champagne (22kt Gold)	13 801 892-47
	Brushed Chrome	13 801 892-93
	Brushed Dark Platinum	13 801 892-99



# TARA Bath spout for wall mounting - Brushed Bronze

13 801 892    Product version from 4/1/2024

mm [inches]



## Flow rate chart



## Codes & Standards

ASME A112.18.1	cUPC	DIN 4109	ISO 3822
Scottish Water Byelaws	UK Water Supply Regulations	Ü-Zeichen	



## TARA Bath spout for wall mounting - Brushed Bronze

---

13 801 892 Product version from 4/1/2024

### Certificates

---

LGA\_18

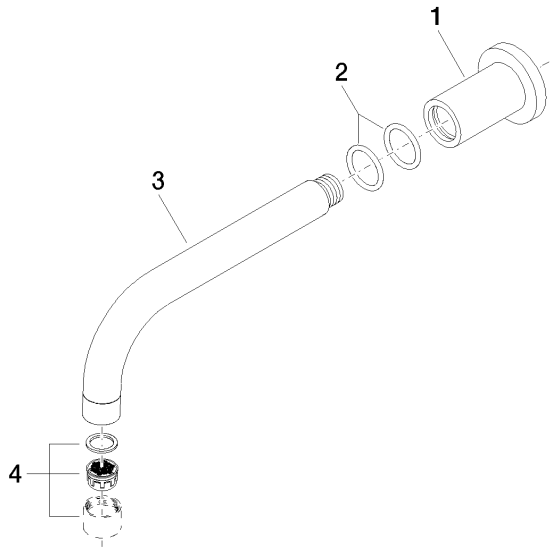
IAPMO\_4976

WRAS\_240602

# TARA Bath spout for wall mounting - Brushed Bronze

13 801 892    Product version from 4/1/2024

Parts for other  
finishes can be found  
here: [Chrome](#)



## Spare parts list

No.	Item Number	Name	Quantity used	Delivery time
1	09 27 89 009-42	rosette	1	60
2	90 14 10 025 00 90	seal	2	2
3	04 28 22 198 20-42	spout	1	60
4	90 23 01 024 00-42	aerator	1	-

Spare part can no longer be ordered, please order the replacement item