

IMO Three-hole basin mixer with pop-up waste - Brushed Platinum




IMO

20 713 670



- 165mm projection
- fixed spout
- rectangular, air-enriched flow
- height of mixer 220 mm
- height up to aerator 170 mm
- hole diameter valve 32 mm
- hole diameter spout 35 mm
- rosette 60 x 60 mm
- 2x screw-in M 10 x 1 pressure hose, leak-tested
- max. flow 5 l/min
- lead-free
- WRAS 2212011
- This product can help a building meet the requirements of Green Building Rating Systems, e.g. LEED®, BREEAM®, DGNB

Only suitable for basins with an overflow.

	Brushed Platinum	20 713 670-06
	Chrome	20 713 670-00
	Brushed Chrome	20 713 670-93

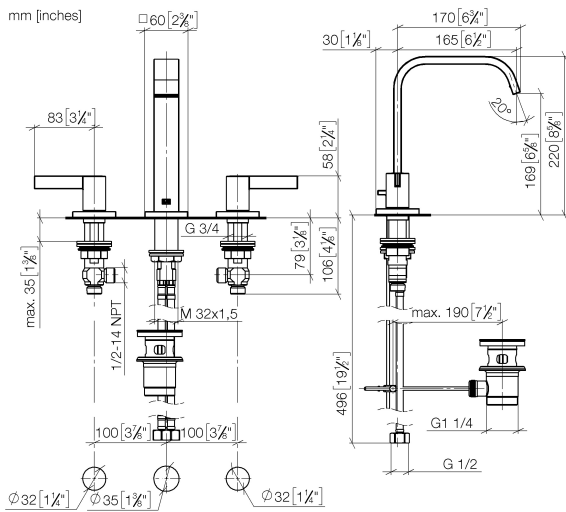
Recommended miscellaneous



- High pressure hoses -**
- 2x 3/8" x 1/2" x 500mm high pressure hose

12 506 970 90

20 713 670



Flow rate chart



Codes & Standards

DIN 4109

ISO 3822

Scottish Water
Byelaws

UK Water Supply
Regulations

Ü-Zeichen



IMO Three-hole basin mixer with pop-up waste - Brushed Platinum

IMO

20 713 670

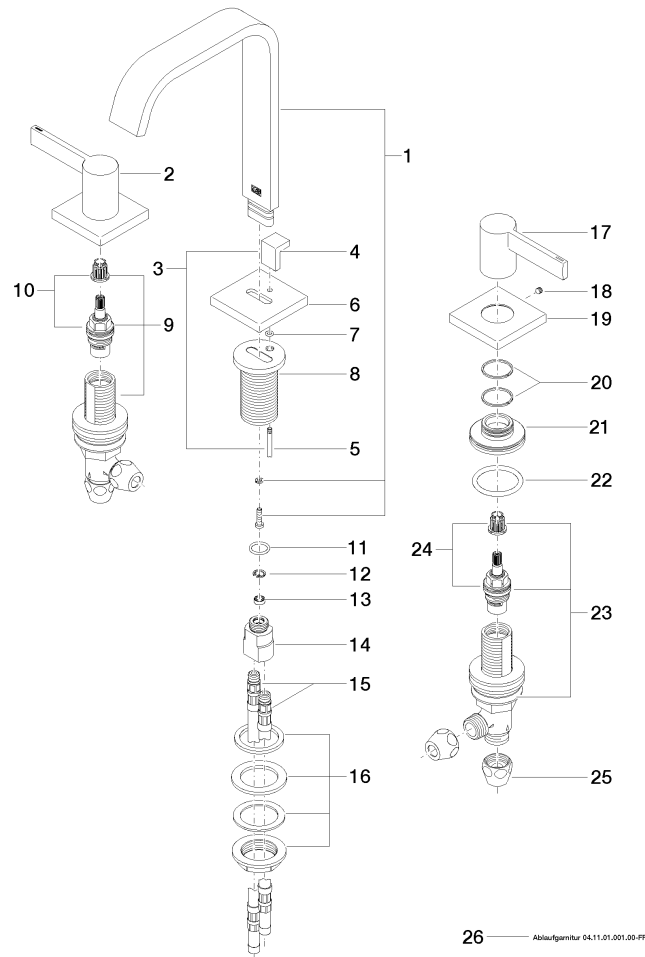
Certificates

WRAS_2212

LGA_28

20 713 670

Product version from 4/1/2014





IMO Three-hole basin mixer with pop-up waste - Brushed Platinum

IMO

20 713 670

Spare parts list

Product version from 4/1/2014

No.	Item Number	Name	Quantity used	Delivery time
	90 28 22 267 00-06	spout	36	10