

## LISSÉ Three-hole basin mixer with pop-up waste - Brushed Light Gold

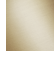

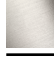


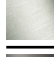

LISSÉ

20 713 845

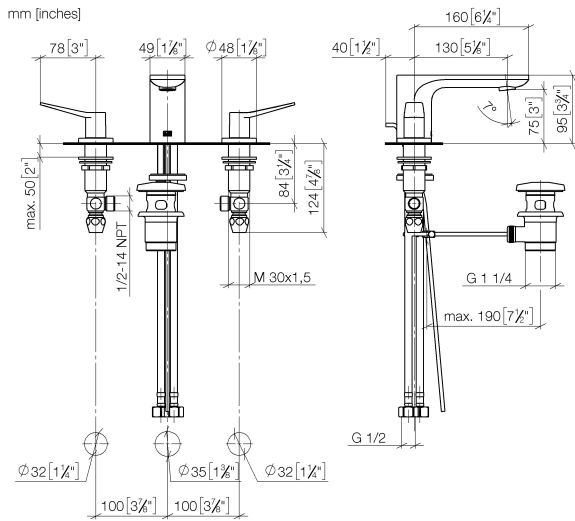


- 130mm projection
- fixed spout
- circular, air-enriched flow
- height of mixer 95 mm
- height up to aerator 75 mm
- hole diameter valve 32 mm
- hole diameter spout 35 mm
- rosette Ø 48 mm
- max. flow 5.7 l/min
- lead-free
- WRAS 2210005
- This product can help a building meet the requirements of Green Building Rating Systems, e.g. LEED®, BREEAM®, DGNB

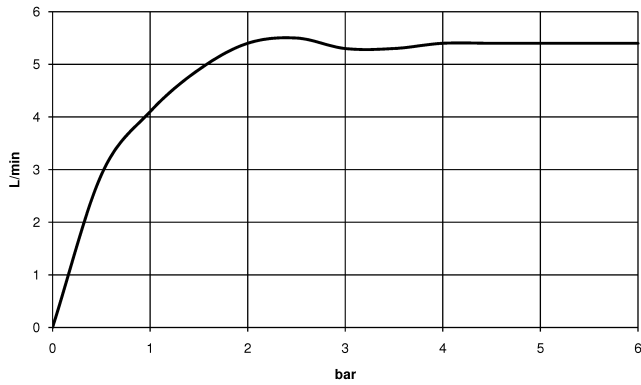
Only suitable for basins with an overflow.

|  |                       |               |
|--|-----------------------|---------------|
|  | Brushed Light Gold    | 20 713 845-27 |
|  | Chrome                | 20 713 845-00 |
|  | Brushed Platinum      | 20 713 845-06 |
|  | Dark Chrome           | 20 713 845-19 |
|  | Matte Black           | 20 713 845-33 |
|  | Brushed Chrome        | 20 713 845-93 |
|  | Brushed Dark Platinum | 20 713 845-99 |

20 713 845



**Flow rate chart**



**Codes & Standards**

DIN 4109

ISO 3822

Scottish Water  
Byelaws

UK Water Supply  
Regulations

Ü-Zeichen



## LISSÉ Three-hole basin mixer with pop-up waste - Brushed Light Gold

---

LISSÉ

20 713 845

### Certificates

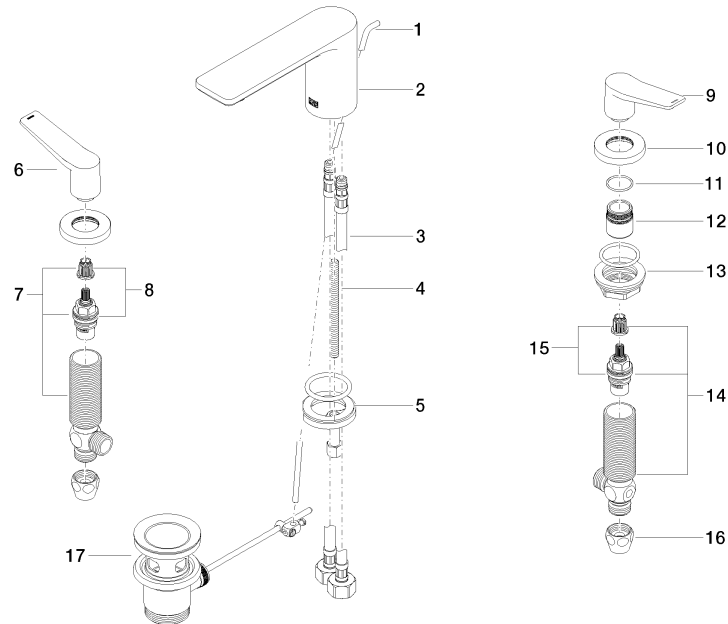
---

LGA\_29

WRAS\_2210

**Product version from 3/9/2016**

Parts for other  
finishes can be found  
here: [Chrome](#)





## LISSE Three-hole basin mixer with pop-up waste - Brushed Light Gold

LISSE

20 713 845

### Spare parts list

#### Product version from 3/9/2016

| No. | Item Number     | Name     | Quantity used | Delivery time |
|-----|-----------------|----------|---------------|---------------|
|     | 09 31 09 120-27 | pull-rod | 23            | 60            |