

## TARA Single-hole basin mixer with pop-up waste - Brushed Chrome

TARA

22 302 892



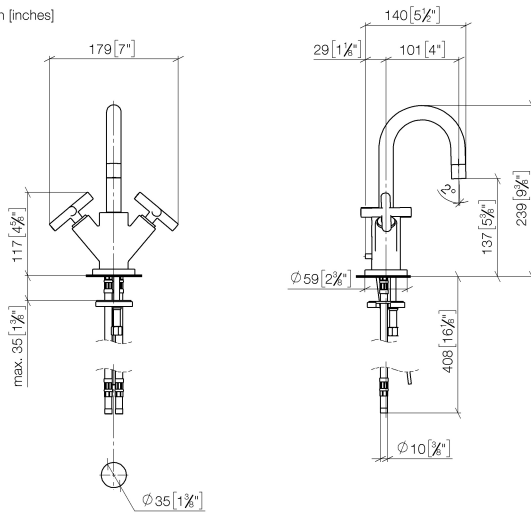
- 100mm projection
- pivotable spout 360°
- circular, air-enriched flow
- height of mixer 235 mm
- height up to aerator 134 mm
- hole diameter 35 mm
- rosette Ø 59 mm
- 2x screw-in M 10 x 1 pressure hose, leak-tested
- max. flow 7 l/min
- lead-free
- This product can help a building meet the requirements of Green Building Rating Systems, e.g. LEED®, BREEAM®, DGNB
- WRAS 1810003

Only suitable for basins with an overflow.

|  |                                |               |
|--|--------------------------------|---------------|
|    | Brushed Chrome                 | 22 302 892-93 |
|    | Chrome                         | 22 302 892-00 |
|    | Brushed Platinum               | 22 302 892-06 |
|    | Platinum                       | 22 302 892-08 |
|    | Dark Chrome                    | 22 302 892-19 |
|    | Brushed Durabronze (23kt Gold) | 22 302 892-28 |
|    | Matte Black                    | 22 302 892-33 |
|    | Brushed Bronze                 | 22 302 892-42 |
|    | Brushed Champagne (22kt Gold)  | 22 302 892-46 |
|   | Champagne (22kt Gold)          | 22 302 892-47 |
|  | Brushed Dark Platinum          | 22 302 892-99 |

22 302 892

mm [inches]



### Flow rate chart



### Codes & Standards

DIN 4109

EN 200

Executive Order  
no. 1007

ISO 3822

Scottish Water  
Byelaws

UK Water Supply  
Regulations

Ü-Zeichen

VA-Zeichen



## TARA Single-hole basin mixer with pop-up waste - Brushed Chrome

TARA

22 302 892

### Certificates

LGA\_18

GDV\_0400

ETA\_18

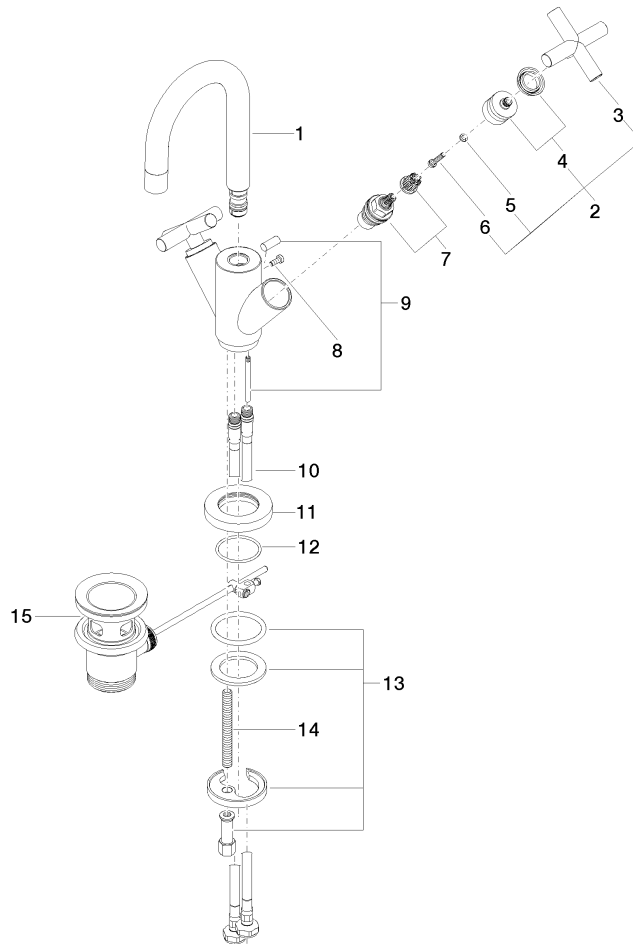
WRAS\_1810

22 302 892

Product version from 6/30/2009 to 5/27/2021

**Product version from 5/27/2021**

Parts for other  
finishes can be found  
here: [Chrome](#)





## TARA Single-hole basin mixer with pop-up waste - Brushed Chrome

TARA

22 302 892

### Spare parts list

Product version from 6/30/2009 to 5/27/2021

#### Product version from 5/27/2021

| No. | Item Number        | Name  | Quantity used | Delivery time |
|-----|--------------------|-------|---------------|---------------|
|     | 90 28 22 215 01-93 | spout | 22            | 20            |