

## TARA Angle valve - Brushed Platinum

TARA

22 900 892

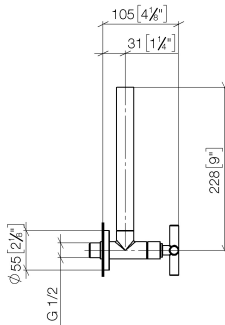


- rosette Ø 55 mm
- hose covering 200mm, for shortening

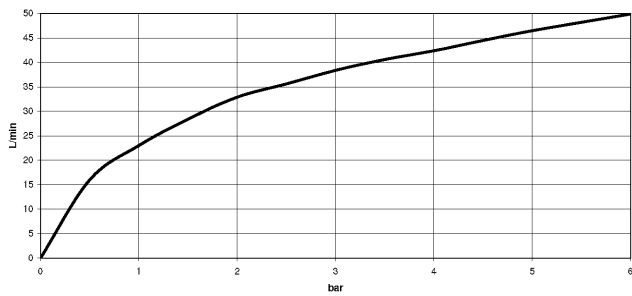
	Brushed Platinum	22 900 892-06
	Chrome	22 900 892-00
	Platinum	22 900 892-08
	Dark Chrome	22 900 892-19
	Brushed Durabronze (23kt Gold)	22 900 892-28
	Matte Black	22 900 892-33
	Brushed Bronze	22 900 892-42
	Brushed Champagne (22kt Gold)	22 900 892-46
	Champagne (22kt Gold)	22 900 892-47
	Brushed Dark Platinum	22 900 892-99

22 900 892

mm [inches]



**Flow rate chart**

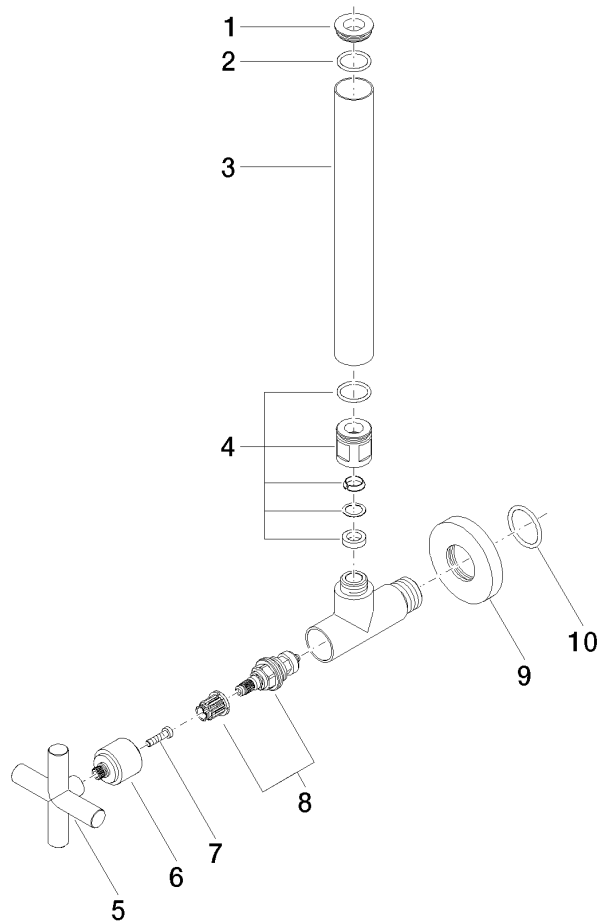


22 900 892

Product version up to 5/27/2021

**Product version from 5/27/2021**

Parts for other  
finishes can be found  
here: [Chrome](#)





## TARA Angle valve - Brushed Platinum

TARA

22 900 892

### Spare parts list

Product version up to 5/27/2021

#### Product version from 5/27/2021

No.	Item Number	Name	Quantity used	Delivery time
	09 21 22 000-06	nipple	10	10