

TARA Angle valve - Brushed Bronze

TARA

22 900 892

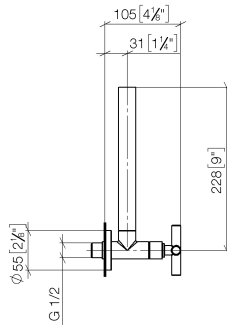


- rosette Ø 55 mm
- hose covering 200mm, for shortening

	Brushed Bronze	22 900 892-42
	Chrome	22 900 892-00
	Brushed Platinum	22 900 892-06
	Platinum	22 900 892-08
	Dark Chrome	22 900 892-19
	Brushed Durabronze (23kt Gold)	22 900 892-28
	Matte Black	22 900 892-33
	Brushed Champagne (22kt Gold)	22 900 892-46
	Champagne (22kt Gold)	22 900 892-47
	Brushed Dark Platinum	22 900 892-99

22 900 892

mm [inches]

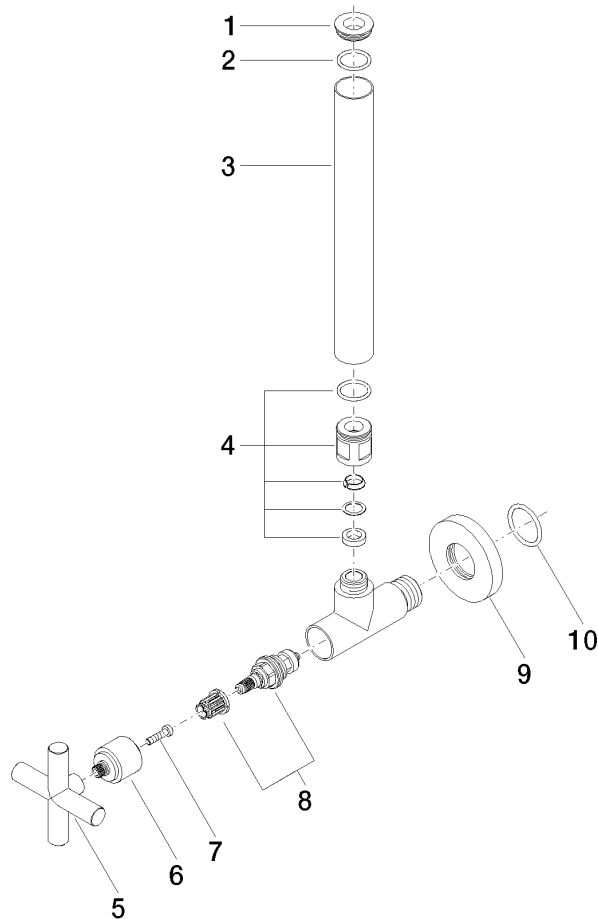


Flow rate chart



Product version from 5/27/2021

Parts for other
finishes can be found
here: [Chrome](#)





Spare parts list

Product version from 5/27/2021