

# Angle valve - Brushed Dark Platinum

SERIES SPECIFIC

22 901 782    Product version from 3/10/2014 to 5/27/2021

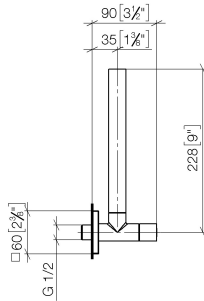


- rosette 60 x 60 mm
- hose covering 200mm, for shortening
- 1/2" connection
- WRAS

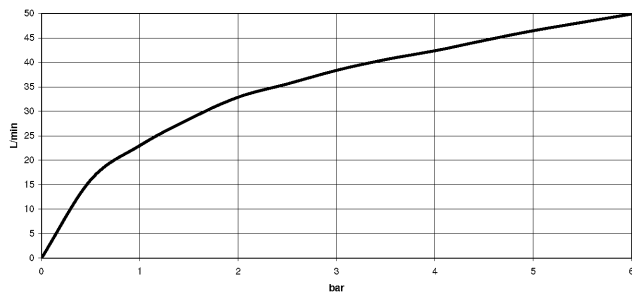
	Brushed Dark Platinum	22 901 782-99
	Chrome	22 901 782-00
	Brushed Platinum	22 901 782-06
	Platinum	22 901 782-08
	Dark Chrome	22 901 782-19
	Brushed Durabronze (23kt Gold)	22 901 782-28
	Matte Black	22 901 782-33
	Brushed Champagne (22kt Gold)	22 901 782-46
	Champagne (22kt Gold)	22 901 782-47
	Brushed Chrome	22 901 782-93

22 901 782 Product version from 3/10/2014 to 5/27/2021

mm [inches]



### Flow rate chart



### Codes & Standards

Scottish Water  
Byelaws

UK Water Supply  
Regulations



## Angle valve - Brushed Dark Platinum

SERIES SPECIFIC

22 901 782 Product version from 3/10/2014 to 5/27/2021

Certificates and sustainability

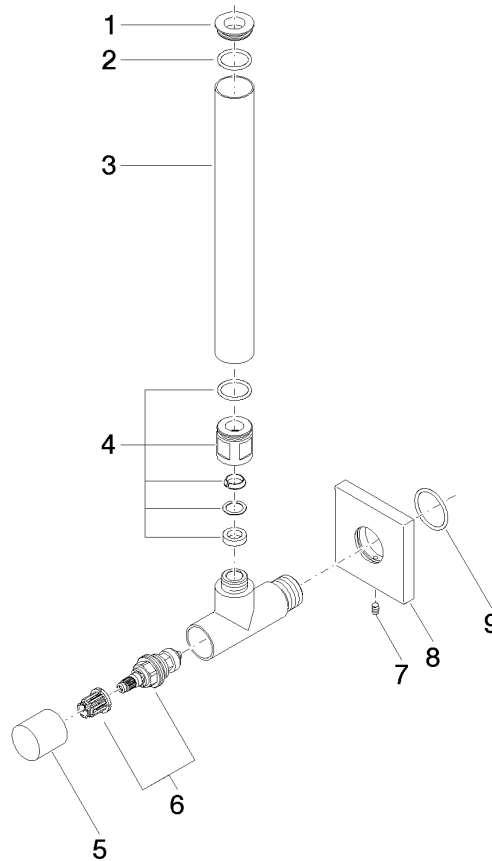
WRAS\_2205

## Angle valve - Brushed Dark Platinum

SERIES SPECIFIC

22 901 782 Product version from 3/10/2014 to 5/27/2021

Parts for other  
finishes can be found  
here: [Chrome](#)



## Spare parts list

No.	Item Number	Name	Quantity used	Delivery time
	9 09 14 10 112 90	seal	1.00	2
	7 09 31 11 048 90	pin	1.00	2
	5 09 20 22 001-99	handle	1.00	20
	6 90 90 03 006 00 90	top	1.00	2
	8 09 27 78 042-99	rosette	1.00	20
	3 09 28 22 020-99	pipe	1.00	20
	4 04 24 04 220 01-99	threaded connector	1.00	-
Spare part can no longer be ordered, please order the replacement item				
	1 09 21 22 000-99	nipple	1.00	20
	2 90 14 10 010 00 90	seal	1.00	2