

## TARA Two-hole bath mixer for free-standing assembly with hand shower set - Dark Chrome

TARA

25 943 892



- 220mm projection
- pivotable spout 180°
- Hand shower: COMPACT RAIN, max. flow rate 6.8 l/min (at 3 bar)
- spout: circular, air-enriched flow
- hand shower with anti-scale system
- rotary diverter for bath/shower
- total height 920 mm
- stand pipes height 628 mm
- height up to aerator 765 mm
- slide-on rosettes Ø 90 mm
- gauge 150 mm
- metal shower hose 1250mm with integrated anti-twist protection
- pivotable shower holder on the right foot
- max. flow 22 l/min at 3 bar flow pressure
- WRAS 2212005
- Intrinsic protection against back flow.**

Intrinsic protection against back flow.

	Dark Chrome	25 943 892-19
	Chrome	25 943 892-00
	Brushed Platinum	25 943 892-06
	Platinum	25 943 892-08
	Brushed Durabronze (23kt Gold)	25 943 892-28
	Matte Black	25 943 892-33
	Brushed Bronze	25 943 892-42
	Brushed Champagne (22kt Gold)	25 943 892-46
	Champagne (22kt Gold)	25 943 892-47
	Brushed Chrome	25 943 892-93
	Brushed Dark Platinum	25 943 892-99

### Required miscellaneous

#### **Concealed floor mounting -**

35 944 970 90

- max. recess depth 160 mm
- min. recess depth 80 mm

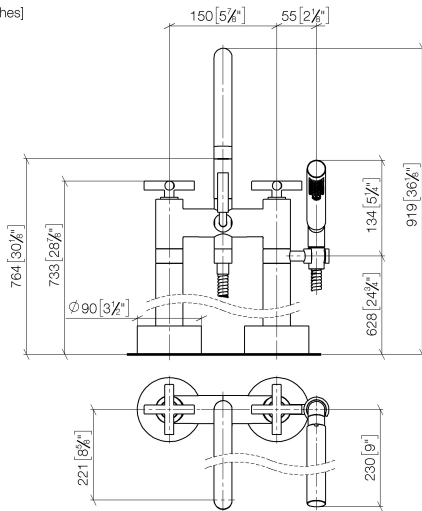


## TARA Two-hole bath mixer for free-standing assembly with hand shower set - Dark Chrome

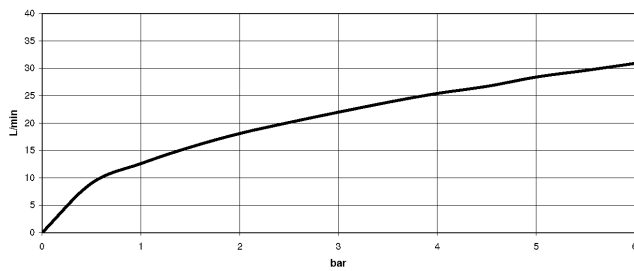
TARA

25 943 892

mm [inches]



### Flow rate chart



### Codes & Standards

Scottish Water  
Byelaws

UK Water Supply  
Regulations



## TARA Two-hole bath mixer for free-standing assembly with hand shower set - Dark Chrome

---

TARA

25 943 892

Certificates

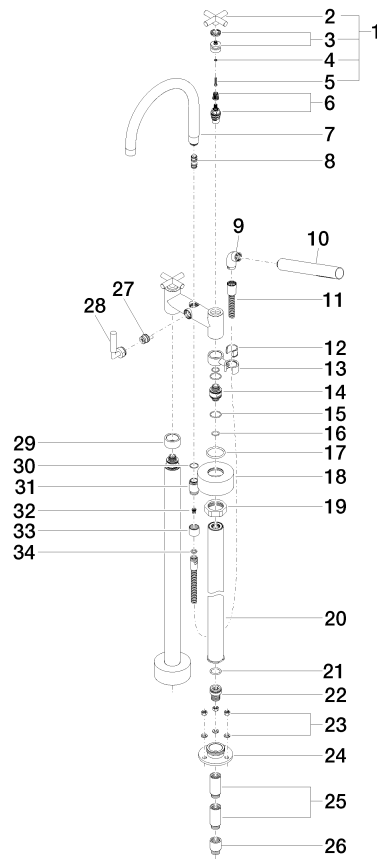
---

WRAS\_2212

# TARA Two-hole bath mixer for free-standing assembly with hand shower set - Dark Chrome

TARA

25 943 892





## TARA Two-hole bath mixer for free-standing assembly with hand shower set - Dark Chrome

---

TARA

25 943 892

### **Spare parts list**