

# TARA Showerpipe without hand shower FlowReduce 220 mm - Brushed Durabronz (23kt Gold)

TARA

26 633 892 Product version from 4/1/2024



## Rain shower:

- rain shower Ø 220 mm
- overhead shower: rain flow
- max. rainshower flow 7 l/min
- Function from: l/min

## hand shower:

## Control element:

- rotary diverter for fixed-riser shower/hand shower
- 1500 mm metal shower hose

## Technical data:

- shower with fixed riser projection 420mm
- height of fittings up to rain shower (bottom edge) 1007mm
- height of fittings up to top edge of elbow 1167mm
- rosette for wall mounting Ø 57mm
- rosette for shower holder Ø 55mm
- rosette for shower mixer Ø 65mm
- Pipe diameter 20 mm
- gauge 150 mm - 13 mm
- 1/2" connection

## Notes:

- This product can help a building meet the requirements of Green Building Rating Systems, e.g. LEED®, BREEAM®, DGNB

This article does not include a hand shower!

Intrinsic protection against back flow.

	Brushed Durabronz (23kt Gold)	26 633 892-28
	Chrome	26 633 892-00
	Brushed Platinum	26 633 892-06
	Platinum	26 633 892-08
	Dark Chrome	26 633 892-19
	Matte Black	26 633 892-33
	Brushed Dark Brass	26 633 892-39
	Brushed Bronze	26 633 892-42
	Brushed Champagne (22kt Gold)	26 633 892-46
	Champagne (22kt Gold)	26 633 892-47
	Brushed Chrome	26 633 892-93
	Brushed Dark Platinum	26 633 892-99

## TARA Showerpipe without hand shower FlowReduce 220 mm - Brushed Durabross (23kt Gold)

TARA

26 633 892 Product version from 4/1/2024

### Required miscellaneous



**Hand shower - Brushed Durabross (23kt Gold)** 28 017 979-28

### Required miscellaneous



**Hand shower - Brushed Durabross (23kt Gold)** 28 016 979-28

### Required miscellaneous



**Hand shower - Brushed Durabross (23kt Gold)** 28 015 979-28

### Required miscellaneous



**Hand shower FlowReduce - Brushed Durabross (23kt Gold)** 28 012 979-28 0010

### Required miscellaneous



**SERIES-VARIOUS Hand shower FlowReduce - Brushed Durabross (23kt Gold)** 28 027 979-28 0010

### Required miscellaneous



**SERIES-VARIOUS Hand shower FlowReduce - Brushed Durabross (23kt Gold)** 28 029 979-28 0010

### Required miscellaneous



**Hand shower - Brushed Durabross (23kt Gold)** 28 018 979-28

### Required miscellaneous



**Hand shower FlowReduce - Brushed Durabross (23kt Gold)** 28 016 979-28 0010

### Required miscellaneous



**Hand shower - Brushed Durabross (23kt Gold)** 28 012 979-28

### Required miscellaneous



**Hand shower FlowReduce - Brushed Durabross (23kt Gold)** 28 018 979-28 0010

### Required miscellaneous

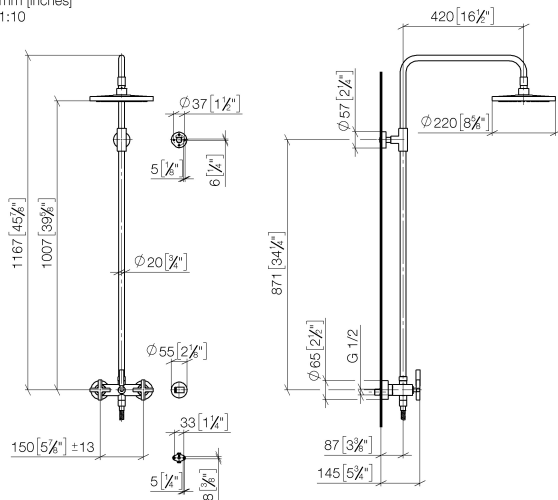


**SERIES-VARIOUS Hand shower FlowReduce - Brushed Durabross (23kt Gold)** 28 025 979-28 0010

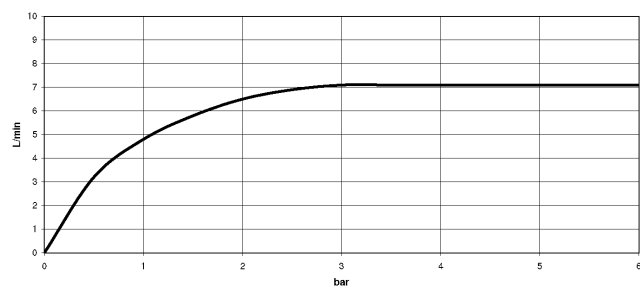
# TARA Showerpipe without hand shower FlowReduce 220 mm - Brushed Durabron (23kt Gold)

TARA

26 633 892 Product version from 4/1/2024  
mm [inches]  
1:10



Flow rate chart



## Codes & Standards

DIN 4109

EN 1717

ISO 3822

Scottish Water  
Byelaws

UK Water Supply  
Regulations

Ü-Zeichen



## TARA Showerpipe without hand shower FlowReduce 220 mm - Brushed Durabrass (23kt Gold)

---

TARA

26 633 892 Product version from 4/1/2024

Certificates and sustainability

---

Belgaqua\_21-023-2 WRAS\_2204

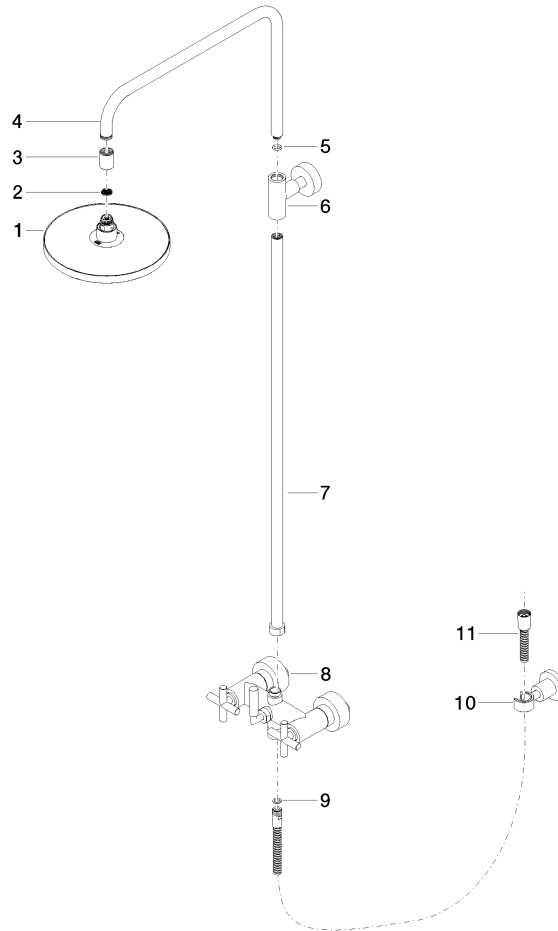
LGA\_38

TARA Showerpipe without hand shower FlowReduce 220 mm - Brushed Durabrass (23kt Gold)

TARA

26 633 892 Product version from 4/1/2024

Parts for other finishes can be found here: [Chrome](#)



## Spare parts list

No.	Item Number	Name	Quantity used	Delivery time
	8 04 17 10 020 01-28	fitting	1.00	20
	6 90 17 11 037 00-28	holder	1.00	20
	7 90 28 22 096 00-28	pipe	1.00	20
	4 04 28 22 101 20-28	spout	1.00	20
	10 28 050 892-28	TARA Wall bracket - Brushed Durabrass (23kt Gold)	1.00	20
	3 09 24 03 177 20-28	adaptor	1.00	20
	2 09 23 01 039 90	sieve	1.00	2
	11 28 304 970-28	Metal shower hose 1/2" x 3/8" x 1500 mm - Brushed Durabrass (23kt Gold)	1.00	20
	9 90 14 20 026 00 90	seal	1.00	2
	5 90 14 10 011 00 90	seal	1.00	2
	1 90 12 05 092 20-28	shower	1.00	20