

## Affusion pipe with cover plate - Brushed Durabrand (23kt Gold)

IMO

27 838 979



Fits: IMO, MEM, CL.1, CYO

- LAMINAR FLOW, max. flow rate 15 l/min (at 3 bar)
- 3/8" shower outlet
- cover plate 240 x 60 mm
- metal shower hose 1250mm with integrated anti-twist protection
- 1/2" connection
- plug-link mounting

Intrinsic protection against back flow.

|  |                               |               |
|--|-------------------------------|---------------|
|  | Brushed Durabrand (23kt Gold) | 27 838 979-28 |
|  | Chrome                        | 27 838 979-00 |
|  | Brushed Platinum              | 27 838 979-06 |
|  | Platinum                      | 27 838 979-08 |
|  | Dark Chrome                   | 27 838 979-19 |
|  | Brushed Light Gold            | 27 838 979-27 |
|  | Matte Black                   | 27 838 979-33 |
|  | Brushed Chrome                | 27 838 979-93 |
|  | Brushed Dark Platinum         | 27 838 979-99 |

### Recommended miscellaneous



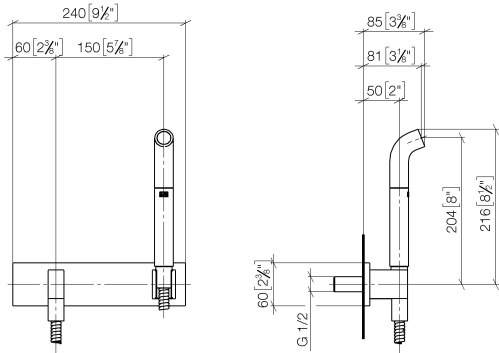
#### Concealed wall elbow -

35 085 970 90

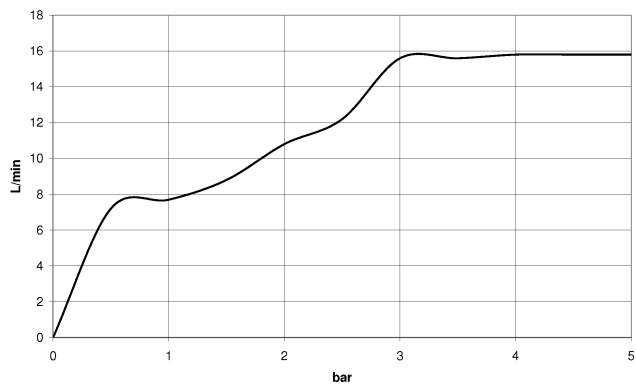
- max. recess depth 163 mm
- min. recess depth 90 mm

27 838 979

mm [inches]



Flow rate chart



Codes & Standards

DIN 4109

EN 1717

ISO 3822

Ü-Zeichen



## Affusion pipe with cover plate - Brushed Durabrass (23kt Gold)

---

IMO

27 838 979

### Certificates

---

Belgaqua\_21-023-2 LGA\_38

27 838 979

Product version up to 3/2/2021

**Product version from 3/2/2021**





## Affusion pipe with cover plate - Brushed Durabrass (23kt Gold)

IMO

27 838 979

### Spare parts list

Product version up to 3/2/2021

#### Product version from 3/2/2021

| No. | Item Number        | Name  | Quantity used | Delivery time |
|-----|--------------------|-------|---------------|---------------|
|     | 04 12 11 073 01-28 | spout | 21            | 20            |