


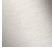


# LULU Shower head FlowReduce - Brushed Platinum

28 508 710    Product version from 5/15/2020



- 200mm projection
- ball-joint pivotable through 30°
- Three settings: COMPACT RAIN, COMPACT SOFT FLOW, COMPACT AQUAPRESSURE FLOW, max. flow rate l/min (at 3 bar)
- with anti-scale system
- spray head Ø 92mm
- rosette 78 x 55 mm
- 1/2" connection
- Function from: 5 l/min
- This product can help a building meet the requirements of Green Building Rating Systems, e.g. LEED®, BREEAM®, DGNB

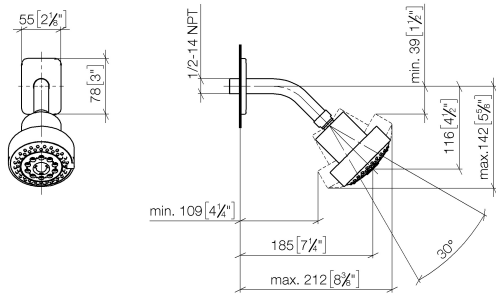
	Brushed Platinum	28 508 710-06 0010
	Chrome	28 508 710-00 0010
	Chrome	28 508 710-00
	Brushed Platinum	28 508 710-06



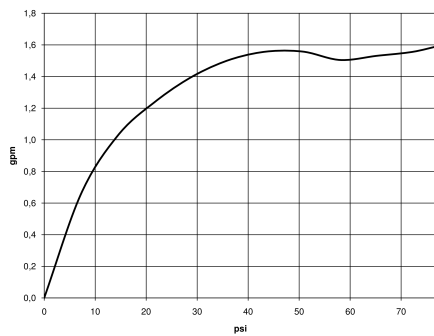
# LULU Shower head FlowReduce - Brushed Platinum

28 508 710 Product version from 5/15/2020

mm [inches]



## Flow rate chart



## Codes & Standards

ASME A112.18.1 cUPC DIN 4109 EPA WaterSense

ISO 3822 Ü-Zeichen WaterSense





## LULU Shower head FlowReduce - Brushed Platinum

---

28 508 710 Product version from 5/15/2020

### Certificates

---

LGA\_38

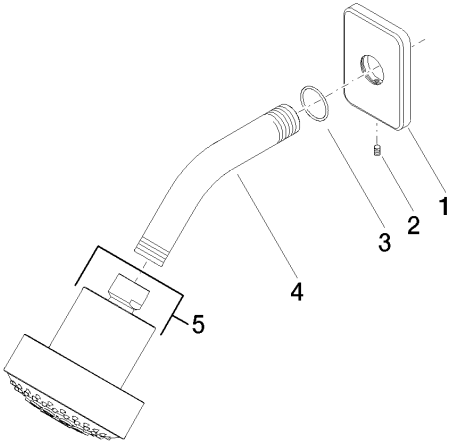
IAPMO\_4976

IAPMO\_11777

# LULU Shower head FlowReduce - Brushed Platinum

28 508 710    Product version from 5/15/2020

Parts for other  
finishes can be found  
here: [Chrome](#)



## Spare parts list

No.	Item Number	Name	Quantity used	Delivery time
1	09 27 71 027-06	rosette	1	10
2	09 31 11 048 90	pin	1	2
3	09 14 10 098 90	seal	1	2
4	09 11 03 011-06	connection	1	10
5	04 12 11 110 30-06	shower	1	10