

Body spray without volume control - Platinum

28 528 782

Product version from 6/1/2024



- spray head Ø 55mm
- ball-joint pivotable through 25° (in any direction)
- HORIZONTAL RAIN, max. flow rate 7 l/min (at 3 bar)
- anti-scale system
- rosette 60 x 60 mm
- 1/2" connection
- WRAS

|   |                               |               |
|---|-------------------------------|---------------|
|    | Platinum                      | 28 528 782-08 |
|    | Chrome                        | 28 528 782-00 |
|    | Brushed Platinum              | 28 528 782-06 |
|    | Dark Chrome                   | 28 528 782-19 |
|    | Brushed Light Gold            | 28 528 782-27 |
|    | Brushed Durabrass (23kt Gold) | 28 528 782-28 |
|    | Matte Black                   | 28 528 782-33 |
|    | Brushed Champagne (22kt Gold) | 28 528 782-46 |
|    | Champagne (22kt Gold)         | 28 528 782-47 |
|   | Brushed Chrome                | 28 528 782-93 |
|  | Brushed Dark Platinum         | 28 528 782-99 |

Recommended miscellaneous



- Concealed wall elbow -

•max. recess depth mm

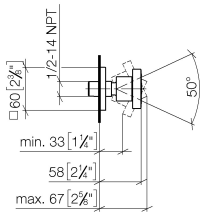
•min. recess depth mm

35 085 970 90

# Body spray without volume control - Platinum

28 528 782    Product version from 6/1/2024

mm [inches]



## Flow rate chart



## Codes & Standards

|          |          |                        |                             |
|----------|----------|------------------------|-----------------------------|
| DIN 4109 | ISO 3822 | Scottish Water Byelaws | UK Water Supply Regulations |
|----------|----------|------------------------|-----------------------------|

## Ü-Zeichen



# Body spray without volume control - Platinum

---

28 528 782    Product version from 6/1/2024

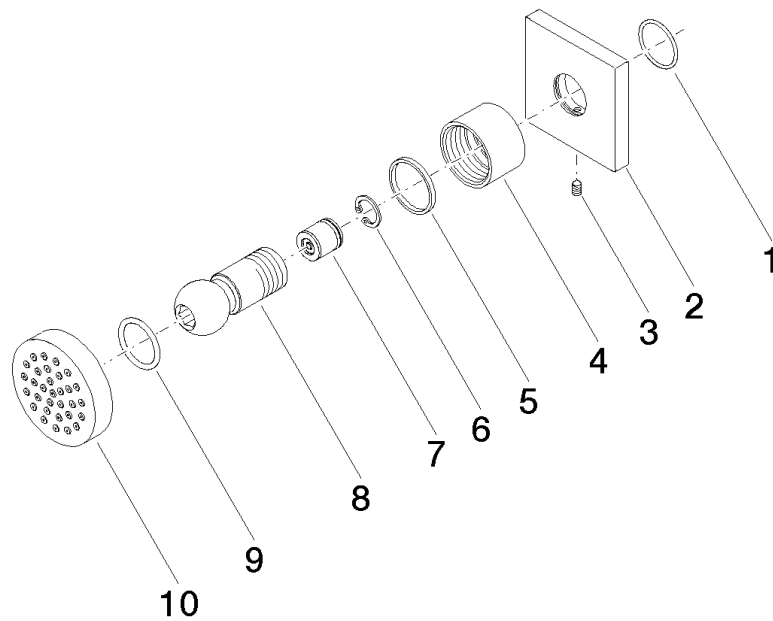
## Certificates

---

LGA\_38                      WRAS\_240602

**Body spray without volume control - Platinum**

28 528 782 Product version from 6/1/2024



**Spare parts list**

| No. | Item Number        | Name                  | Quantity used | Delivery time |
|-----|--------------------|-----------------------|---------------|---------------|
| 1   | 09 14 10 098 90    | seal                  | 1             | 2             |
| 2   | 09 27 98 003-08    | rosette               | 1             | 40            |
| 3   | 09 31 11 048 90    | pin                   | 1             | 2             |
| 4   | 09 23 30 026-08    | nut                   | 1             | 40            |
| 5   | 09 14 15 010 90    | ring                  | 1             | 2             |
| 6   | 09 16 01 014 90    | ring                  | 1             | 2             |
| 7   | 90 23 01 147 00 90 | back-flow preventer   | 1             | 2             |
| 8   | 09 21 40 016-08    | connection            | 1             | 40            |
| 9   | 09 14 10 015 90    | seal                  | 1             | 2             |
| 10  | 90 12 05 027 00-08 | casing ( completely ) | 1             | 40            |