

MADISON Rain shower with ceiling fixing 200 mm - Durabrand (23kt Gold)

MADISON



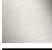


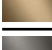

28 565 977    Product version up to 12/5/2019




- rain shower Ø 200 mm
- PURE RAIN, max. flow rate 14 l/min (at 3 bar)
- Function from: 8 l/min
- with anti-scale system

Technical data:

- distance between ceiling and lower edge of the shower 185mm
- rosette Ø 55 mm
- 1/2" connection

	Durabrand (23kt Gold)	28 565 977-09
	Chrome	28 565 977-00
	Brushed Platinum	28 565 977-06
	Platinum	28 565 977-08
	Brushed Durabrand (23kt Gold)	28 565 977-28
	Brushed Dark Brass	28 565 977-39
	Brushed Dark Platinum	28 565 977-99

Recommended miscellaneous

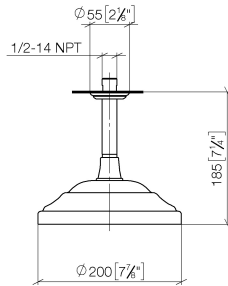
- 

Concealed wall elbow -

  - max. recess depth 163 mm
  - min. recess depth 90 mm

35 085 970 90

mm [inches]



Flow rate chart



Codes & Standards

DIN 4109	EN 1112	ISO 3822	Scottish Water Byelaws
UK Water Supply Regulations	Ü-Zeichen		



## MADISON Rain shower with ceiling fixing 200 mm - Durabrand (23kt Gold)

MADISON

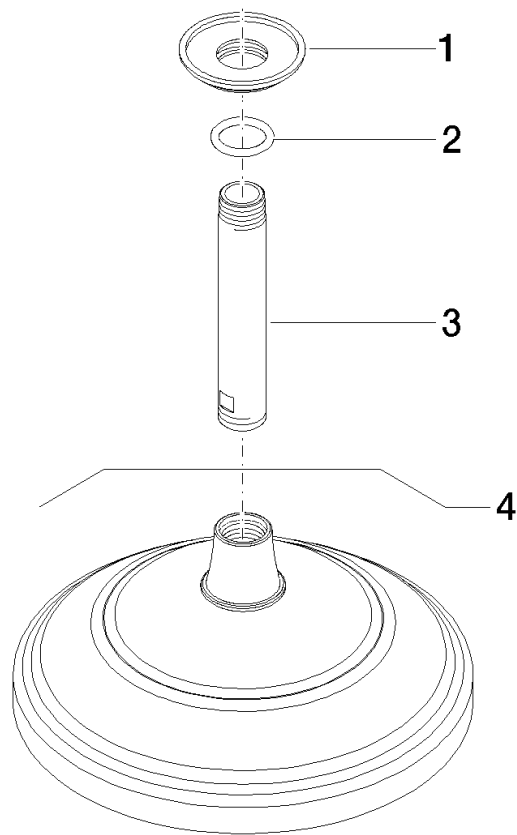
28 565 977 Product version up to 12/5/2019

### Certificates and sustainability

DVGW\_DW-  
6517DN0

LGA\_38

WRAS\_250102



### Spare parts list

No.	Item Number	Name	Quantity used	Delivery time
3	09 11 03 018-09	connection	1.00	40
1	09 27 35 003-09	rosette	1.00	40
2	90 14 10 026 00 90	seal	2.00	2