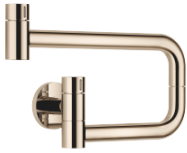


TARA ULTRA POT FILLER Cold-water valve - Champagne (22kt Gold)

TARA ULTRA

30 805 875 Product version from 10/1/2024



- 500mm projection
- pivoting spout
- laminar flow
- cold water only
- max. flow 5.7 l/min at 3 bar flow pressure
- min. recess depth 125 mm
- max. recess depth 80 mm
- lead-free
- This product can help a building meet the requirements of Green Building Rating Systems, e.g. LEED®, BREEAM®, DGNB
- WRAS

	Champagne (22kt Gold)	30 805 875-47
	Chrome	30 805 875-00
	Brushed Platinum	30 805 875-06
	Platinum	30 805 875-08
	Durabrand (23kt Gold)	30 805 875-09
	Dark Chrome	30 805 875-19
	Brushed Durabrand (23kt Gold)	30 805 875-28
	Brushed Bronze	30 805 875-42
	Brushed Champagne (22kt Gold)	30 805 875-46
	Brushed Chrome	30 805 875-93
	Brushed Dark Platinum	30 805 875-99

Required miscellaneous

POT FILLER Concealed wall elbow 35 087 970 90



- min. recess depth 80 mm
- max. recess depth 125 mm

30 805 875 Product version from 10/1/2024



Flow rate chart



Codes & Standards

ASME A112.18.1	cUPC	DIN 4109	ISO 3822
NSF372	NSF61	Scottish Water Byelaws	UK Water Supply Regulations

Ü-Zeichen



TARA ULTRA POT FILLER Cold-water valve - Champagne (22kt Gold)

TARA ULTRA

30 805 875 Product version from 10/1/2024

Certificates and sustainability

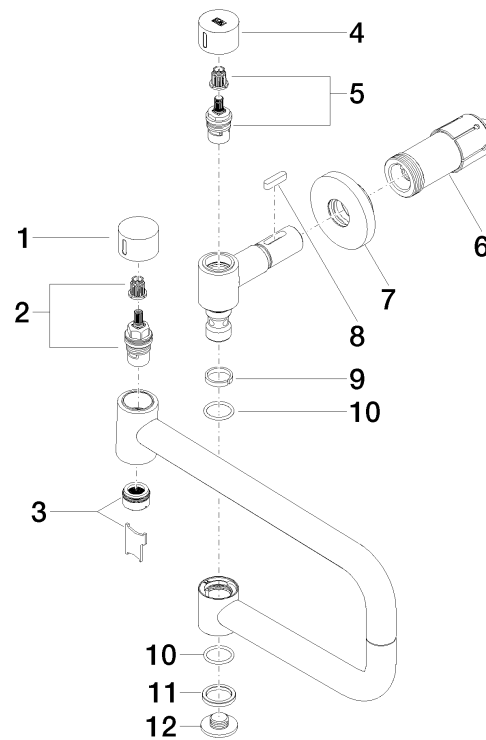
LGA_29

IAPMO_N-4

IAPMO_6

WRAS_240702

IAPMO_4976 (



Spare parts list

No.	Item Number	Name	Quantity used	Delivery time
4	09 20 62 027-47	handle	1.00	-
Spare part can no longer be ordered, please order the replacement item				
2	90 90 03 146 00 90	top	1.00	2
10	09 14 10 015 90	seal	2.00	2
11	09 28 10 139 90	ring	1.00	2
5	90 90 03 171 00 90	top	1.00	2
9	09 28 10 136 90	ring	1.00	2
7	90 27 87 039 00-47	rosette	1.00	30
6	90 30 01 213 00 90	connection	1.00	2
12	09 21 02 028-47	lid	1.00	30
8	90 16 04 001 00 90	spring	1.00	2
1	09 20 62 025-47	handle	1.00	30
3	90 23 01 026 11-47	aerator	1.00	30