

## IMO Single-lever basin mixer with pop-up waste - Brushed Light Gold



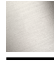




IMO

33 500 671



- 125mm projection
- fixed spout
- rectangular, air-enriched flow
- height of mixer 170 mm
- height up to aerator 71 mm
- hole diameter 35 mm
- 2x screw-in M 10 x 1 pressure hose, leak-tested
- max. flow 4.6 l/min
- lead-free
- This product can help a building meet the requirements of Green Building Rating Systems, e.g. LEED®, BREEAM®, DGNB

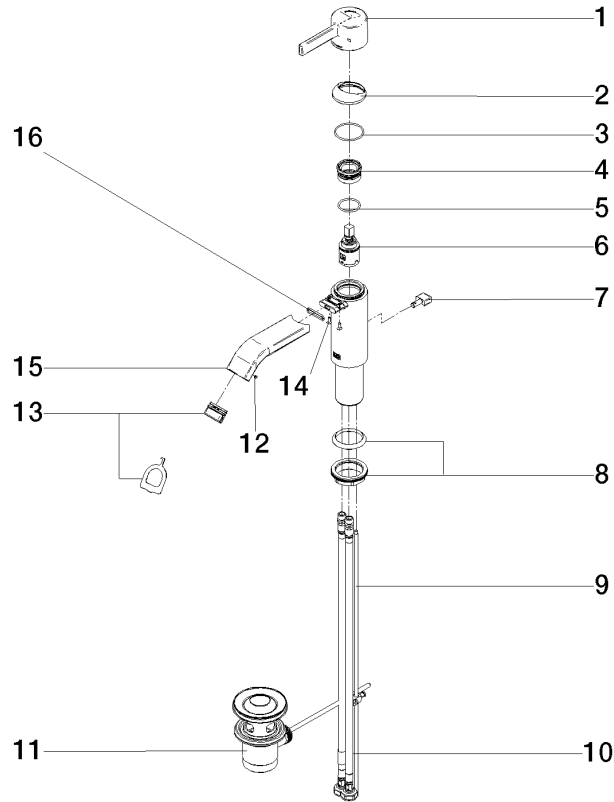
Only suitable for basins with an overflow.

|  |                       |               |
|--|-----------------------|---------------|
|  | Brushed Light Gold    | 33 500 671-27 |
|  | Chrome                | 33 500 671-00 |
|  | Brushed Platinum      | 33 500 671-06 |
|  | Dark Chrome           | 33 500 671-19 |
|  | Matte Black           | 33 500 671-33 |
|  | Brushed Chrome        | 33 500 671-93 |
|  | Brushed Dark Platinum | 33 500 671-99 |



33 500 671

Parts for other  
finishes can be found  
here: [Chrome](#)





## IMO Single-lever basin mixer with pop-up waste - Brushed Light Gold

---

IMO

33 500 671

### **Spare parts list**