

IMO Single-lever basin mixer with pop-up waste - Brushed Chrome



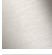




IMO

33 500 671
Product version from 4/1/2024



- 125mm projection
- fixed spout
- rectangular, air-enriched flow
- height of mixer 138 mm
- height up to aerator 71 mm
- hole diameter 35 mm
- 2x screw-in M 10 x 1 pressure hose, leak-tested
- max. flow 4.6 l/min
- lead-free
- This product can help a building meet the requirements of Green Building Rating Systems, e.g. LEED®, BREEAM®, DGNB

Only suitable for basins with an overflow.

	Brushed Chrome	33 500 671-93
	Chrome	33 500 671-00
	Brushed Platinum	33 500 671-06
	Dark Chrome	33 500 671-19
	Brushed Light Gold	33 500 671-27
	Matte Black	33 500 671-33
	Brushed Dark Platinum	33 500 671-99

33 500 671 Product version from 4/1/2024

mm [inches]



**Flow rate chart**



**Codes & Standards**

DIN 4109

ISO 3822

Scottish Water  
Byelaws

UK Water Supply  
Regulations

Ü-Zeichen



## IMO Single-lever basin mixer with pop-up waste - Brushed Chrome

---

IMO

33 500 671 Product version from 4/1/2024

Certificates and sustainability

---

LGA\_19

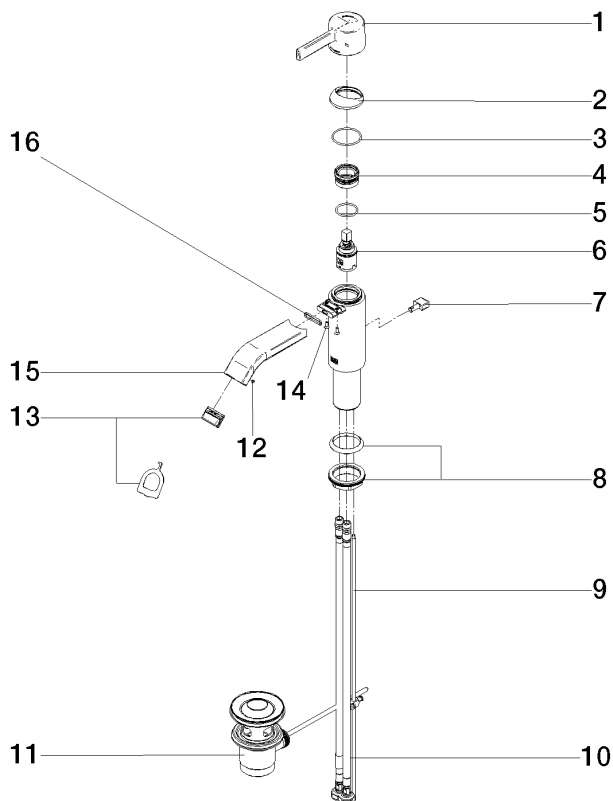
WRAS\_250102

# IMO Single-lever basin mixer with pop-up waste - Brushed Chrome

IMO

33 500 671 Product version from 4/1/2024

Parts for other finishes can be found here: [Chrome](#)



## Spare parts list

No.	Item Number	Name	Quantity used	Delivery time
	9 09 31 09 080-93	pull-rod	1.00	20
	2 90 28 30 059 00-93	cover	1.00	-
Spare part can no longer be ordered, please order the replacement item				
	1 90 20 67 019 00-93	handle	1.00	20
	10 04 30 04 104 00 90	hose	2.00	2
	6 90 15 05 042 00 90	cartridge	1.00	2
	11 90 11 01 001 00-93	pop-up waste	1.00	20
	5 09 14 10 112 90	seal	1.00	2
	13 90 29 03 134 00 90	aerator	1.00	2
	14 09 30 30 166 90	screw	2.00	2
	4 90 23 10 146 00 90	nut	1.00	2
	12 09 31 11 006 90	pin	1.00	2
	3 09 14 10 102 90	seal	1.00	2
	8 04 23 10 044 07 90	fixing set	1.00	2
	15 90 28 22 440 00-93	spout	1.00	20
	16 09 14 10 017 90	seal	1.00	2
	7 09 20 67 002-93	handle	1.00	20