

TARA ULTRA Single-lever mixer - Platinum

TARA ULTRA

33 800 875 Product version from 5/31/2010 to 7/25/2018



- 201mm projection
- pivotable spout 360°
- air-enriched flow
- height of mixer 373 mm
- height up to aerator 240 mm
- hole diameter 35 mm
- max. flow 8 l/min at 3 bar flow pressure
- lead-free
- This product can help a building meet the requirements of Green Building Rating Systems, e.g. LEED®, BREEAM®, DGNB
- WRAS

	Platinum	33 800 875-08
	Chrome	33 800 875-00
	Brushed Platinum	33 800 875-06
	Durabronze (23kt Gold)	33 800 875-09
	Dark Chrome	33 800 875-19
	Brushed Durabronze (23kt Gold)	33 800 875-28
	Matte Black	33 800 875-33
	Brushed Bronze	33 800 875-42
	Brushed Champagne (22kt Gold)	33 800 875-46
	Champagne (22kt Gold)	33 800 875-47
	Brushed Chrome	33 800 875-93
	Brushed Dark Platinum	33 800 875-99

Recommended miscellaneous

Strainer waste with control handle - Platinum 10 712 970-08

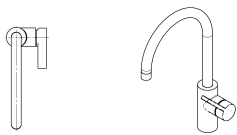
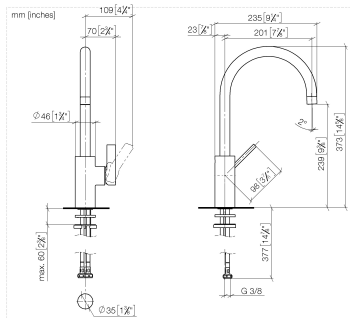


Recommended miscellaneous

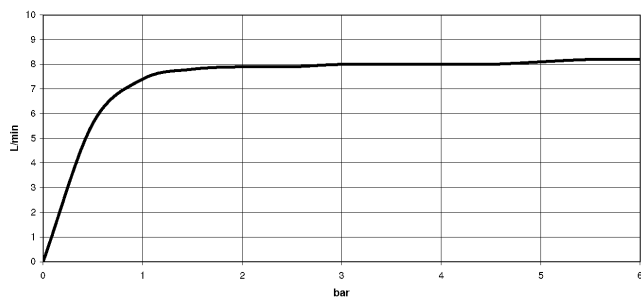
Dispenser without rosette - Platinum 82 424 970-08



33 800 875 Product version from 5/31/2010 to 7/25/2018



Flow rate chart



Codes & Standards

DIN 4109

EN 817

Executive Order
no. 1007

ISO 3822

Scottish Water
Byelaws

UK Water Supply
Regulations

Ü-Zeichen

VA-Zeichen



TARA ULTRA Single-lever mixer - Platinum

TARA ULTRA

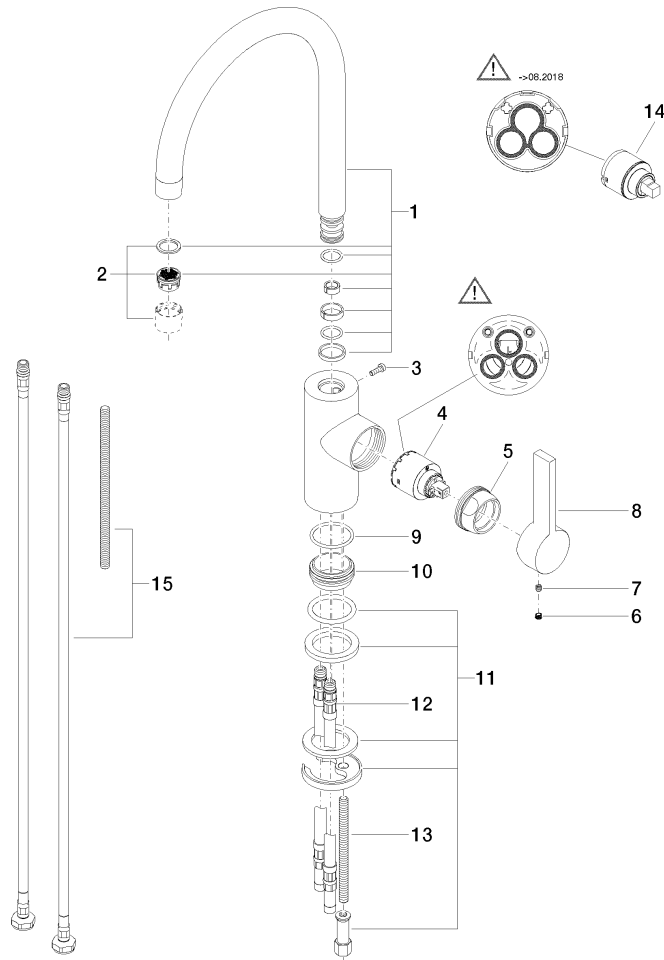
33 800 875 Product version from 5/31/2010 to 7/25/2018

Certificates and sustainability

GDV_0400	LGA_18	WRAS_2101	ETA_18
----------	--------	-----------	--------

33 800 875 Product version from 5/31/2010 to 7/25/2018

Parts for other
finishes can be found
here: [Chrome](#)



Spare parts list

No.	Item Number	Name	Quantity used	Delivery time
10	09 28 10 109-07	ring	1.00	30
11	04 30 11 085 88 90	fixing set	1.00	2
1	90 28 22 204 02-08	spout	1.00	40
12	04 30 04 016 00 90	hose	2.00	60
15	12 803 970 90	extension	1.00	60
2	90 23 01 004 07-08	aerator	1.00	40
5	09 24 04 107-08	nut	1.00	40
8	09 20 79 040-08	handle	1.00	40
13	09 31 11 012 90	pin	1.00	2
3	09 30 30 080 90	screw	1.00	2
9	09 14 10 119 90	seal	1.00	2
4	90 15 05 061 00 90	cartridge	1.00	60
7	90 31 11 030 00 90	pin	1.00	2
6	90 31 20 109 00 90	plug	1.00	2
14	90 15 05 045 00 90	cartridge	1.00	2