

## TARA ULTRA Single-lever mixer - Matte Black

TARA ULTRA

33 800 875 Product version from 5/3/2021



- 201mm projection
- pivotable spout 360°
- air-enriched flow
- height of mixer 373 mm
- height up to aerator 240 mm
- hole diameter 35 mm
- max. flow 8 l/min at 3 bar flow pressure
- lead-free
- This product can help a building meet the requirements of Green Building Rating Systems, e.g. LEED®, BREEAM®, DGNB
- WRAS

	Matte Black	33 800 875-33
	Chrome	33 800 875-00
	Brushed Platinum	33 800 875-06
	Platinum	33 800 875-08
	Durabrass (23kt Gold)	33 800 875-09
	Dark Chrome	33 800 875-19
	Brushed Durabrass (23kt Gold)	33 800 875-28
	Brushed Bronze	33 800 875-42
	Brushed Champagne (22kt Gold)	33 800 875-46
	Champagne (22kt Gold)	33 800 875-47
	Brushed Chrome	33 800 875-93
	Brushed Dark Platinum	33 800 875-99

### Recommended miscellaneous

**Dispenser without rosette - Matte Black** 82 424 970-33

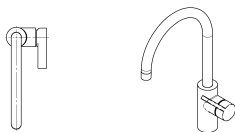
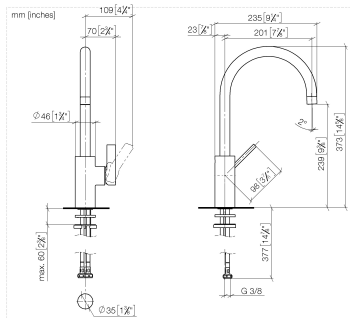


### Recommended miscellaneous

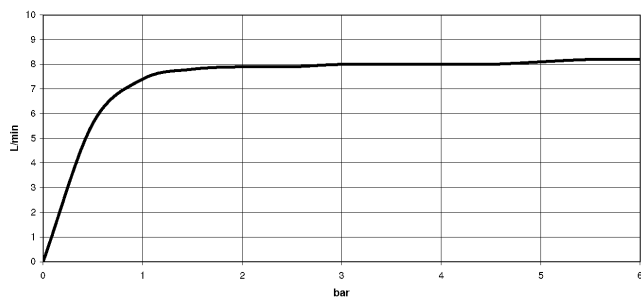
**Strainer waste with control handle - Matte Black** 10 712 970-33



33 800 875 Product version from 5/3/2021



### Flow rate chart



### Codes & Standards

DIN 4109	EN 817	Executive Order no. 1007	ISO 3822
Scottish Water Byelaws	UK Water Supply Regulations	Ü-Zeichen	VA-Zeichen



TARA ULTRA Single-lever mixer - Matte Black

TARA ULTRA

33 800 875    Product version from 5/3/2021

Certificates and sustainability

GDV_0400	LGA_18	WRAS_2101	ETA_18
----------	--------	-----------	--------

33 800 875 Product version from 5/3/2021

Parts for other  
finishes can be found  
here: [Chrome](#)

