

## TARA Single-lever mixer - Brushed Durabron (23kt Gold)

TARA

33 815 888



- 236mm projection
- pivotable spout 360°
- air-enriched flow
- height of mixer 400 mm
- height up to aerator 230 mm
- hole diameter 35 mm
- max. flow 7 l/min at 3 bar flow pressure
- lead-free
- WRAS 2311044
- This product can help a building meet the requirements of Green Building Rating Systems, e.g. LEED®, BREEAM®, DGNB

|  |                               |               |
|--|-------------------------------|---------------|
|    | Brushed Durabron (23kt Gold)  | 33 815 888-28 |
|    | Chrome                        | 33 815 888-00 |
|    | Brushed Platinum              | 33 815 888-06 |
|    | Platinum                      | 33 815 888-08 |
|    | Durabron (23kt Gold)          | 33 815 888-09 |
|    | Dark Chrome                   | 33 815 888-19 |
|    | Matte Black                   | 33 815 888-33 |
|    | Brushed Champagne (22kt Gold) | 33 815 888-46 |
|    | Champagne (22kt Gold)         | 33 815 888-47 |
|   | Brushed Chrome                | 33 815 888-93 |
|  | Brushed Dark Platinum         | 33 815 888-99 |

### Recommended miscellaneous



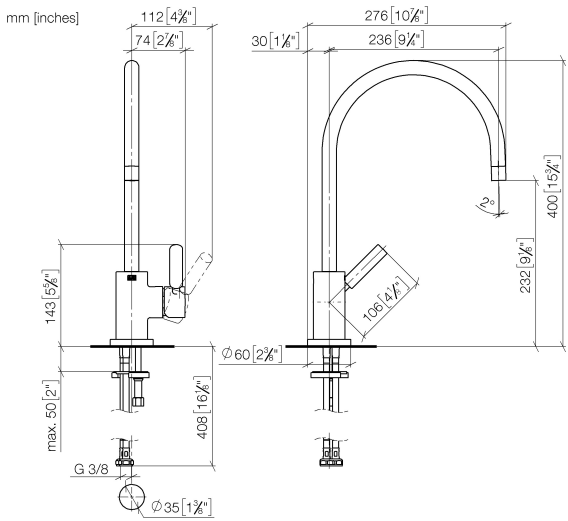
**Strainer waste with control handle** 10 710 970-28  
- Brushed Durabron (23kt Gold)

### Recommended miscellaneous

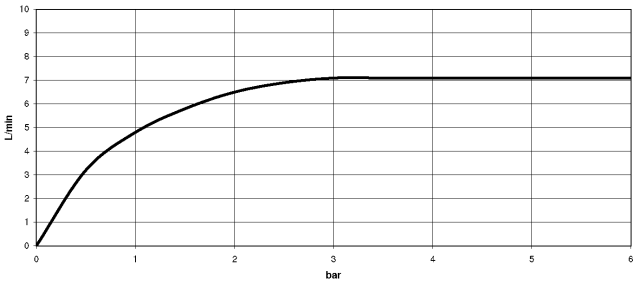


**Dispenser with rosette - Brushed** 82 444 970-28  
**Durabron (23kt Gold)**

33 815 888



Flow rate chart



Codes & Standards

|                           |                                |                             |            |
|---------------------------|--------------------------------|-----------------------------|------------|
| DIN 4109                  | EN 817                         | Executive Order<br>no. 1007 | ISO 3822   |
| Scottish Water<br>Byelaws | UK Water Supply<br>Regulations | Ü-Zeichen                   | VA-Zeichen |



TARA Single-lever mixer - Brushed Durabross (23kt Gold)

TARA

33 815 888

Certificates

|          |        |       |           |
|----------|--------|-------|-----------|
| GDV_0400 | ETA_18 | LGA_8 | WRAS_2311 |
|----------|--------|-------|-----------|

33 815 888

Product version up to 5/31/2010

Product version from 5/31/2010 to 10/27/2020

Product version from 10/27/2020 to 9/7/2021

**Product version from 9/7/2021**

Parts for other  
finishes can be found  
here: [Chrome](#)





## TARA Single-lever mixer - Brushed Durabross (23kt Gold)

TARA

33 815 888

### Spare parts list

Product version up to 5/31/2010

Product version from 5/31/2010 to 10/27/2020

Product version from 10/27/2020 to 9/7/2021

### Product version from 9/7/2021

| No. | Item Number        | Name  | Quantity used | Delivery time |
|-----|--------------------|-------|---------------|---------------|
|     | 90 28 22 049 02-28 | spout | 17            | 20            |