

ELIO Single-lever mixer Pull-out - Brushed Dark Platinum

ELIO

33 840 790 Product version from 12/31/2013 to 5/15/2020



- 235mm projection
- pivotable spout 360°
- air-enriched flow
- height of mixer 337 mm
- height up to aerator 300 mm
- hole diameter 35 mm
- fabric braided hose 1500 mm
- max. flow 8.8 l/min at 3 bar flow pressure
- lead-free
- This product can help a building meet the requirements of Green Building Rating Systems, e.g. LEED®, BREEAM®, DGNB

Intrinsic protection against back flow.

| | | |
|---|--------------------------------|---------------|
|  | Brushed Dark Platinum | 33 840 790-99 |
|  | Chrome | 33 840 790-00 |
|  | Brushed Platinum | 33 840 790-06 |
|  | Platinum | 33 840 790-08 |
|  | Dark Chrome | 33 840 790-19 |
|  | Brushed Durabronze (23kt Gold) | 33 840 790-28 |
|  | Brushed Bronze | 33 840 790-42 |
|  | Brushed Champagne (22kt Gold) | 33 840 790-46 |
|  | Champagne (22kt Gold) | 33 840 790-47 |
|  | Brushed Chrome | 33 840 790-93 |

Recommended miscellaneous

Strainer waste with control handle 10 712 970-99
- Brushed Dark Platinum



33 840 790 Product version from 12/31/2013 to 5/15/2020



Flow rate chart



Codes & Standards

DIN 4109

EN 1717

Executive Order
no. 1007

ISO 3822

Ü-Zeichen



ELIO Single-lever mixer Pull-out - Brushed Dark Platinum

ELIO

33 840 790 Product version from 12/31/2013 to 5/15/2020

Certificates and sustainability

GDV_0400

LGA_19

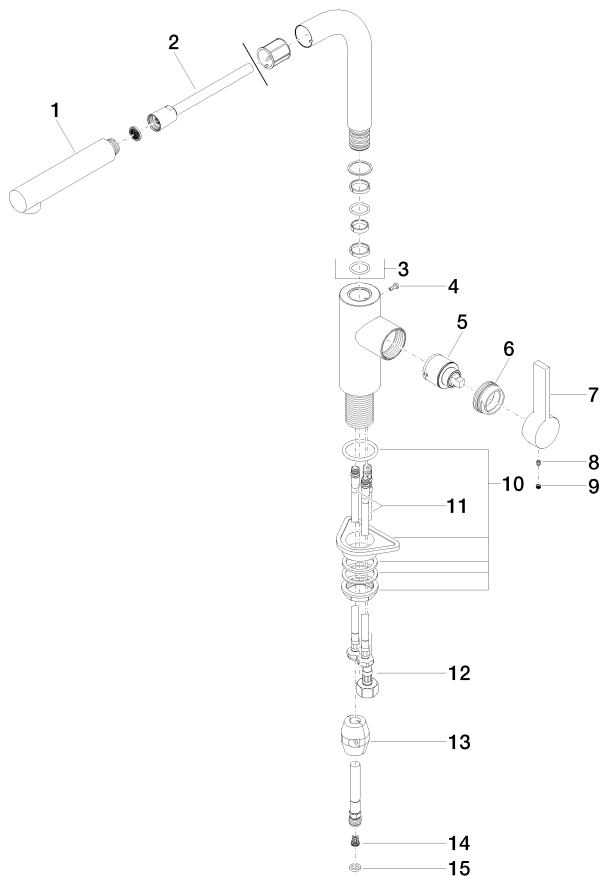
Belgaqua_22_277_2

ELIO Single-lever mixer Pull-out - Brushed Dark Platinum

ELIO

33 840 790 Product version from 12/31/2013 to 5/15/2020

Parts for other
finishes can be found
here: [Chrome](#)



Spare parts list

| No. | Item Number | Name | Quantity used | Delivery time |
|-----|-----------------------|---------------------|---------------|---------------|
| | 12 04 30 04 029 00 90 | hose | 1.00 | 2 |
| | 4 09 30 30 054 90 | screw | 1.00 | 2 |
| | 7 09 20 79 040-99 | handle | 1.00 | 20 |
| | 3 90 28 22 186 00-99 | spout | 1.00 | 20 |
| | 1 04 12 11 106 00-99 | shower | 1.00 | 20 |
| | 10 04 23 10 044 02 90 | fixing set | 1.00 | 2 |
| | 6 09 24 04 141-99 | nut | 1.00 | 20 |
| | 11 04 30 04 104 00 90 | hose | 2.00 | 2 |
| | 14 09 23 01 131 90 | back-flow preventer | 1.00 | 2 |
| | 13 04 21 50 005 00 90 | accessories | 1.00 | 2 |
| | 15 90 14 20 019 00 90 | seal | 1.00 | 2 |
| | 9 90 31 20 109 00 90 | plug | 1.00 | 2 |
| | 8 90 31 11 030 00 90 | pin | 1.00 | 2 |
| | 5 90 15 05 045 00 90 | cartridge | 1.00 | 2 |
| | 2 90 30 02 062 00-99 | hose | 1.00 | 20 |