

## TARA ULTRA Single-lever mixer Pull-down with spray function - Dark Chrome

TARA ULTRA

33 870 875



- 240mm projection
- pivotable spout 360°
- Optional swivel limiter available with swivel limiter set 12 823 970 90
- laminar and spray flow
- height of mixer 500 mm
- height up to laminar flow regulator 240 mm
- hole diameter 35 mm
- 1800 mm metal shower hose
- sprayface with anti-scaling system
- max. flow 10.4 l/min at 3 bar flow pressure
- lead-free
- This product can help a building meet the requirements of Green Building Rating Systems, e.g. LEED®, BREEAM®, DGNB

Intrinsic protection against back flow.

	Dark Chrome	33 870 875-19
	Chrome	33 870 875-00
	Brushed Platinum	33 870 875-06
	Platinum	33 870 875-08
	Durabronze (23kt Gold)	33 870 875-09
	Brushed Durabronze (23kt Gold)	33 870 875-28
	Matte Black	33 870 875-33
	Brushed Champagne (22kt Gold)	33 870 875-46
	Champagne (22kt Gold)	33 870 875-47
	Brushed Chrome	33 870 875-93
	Brushed Dark Platinum	33 870 875-99

### Recommended miscellaneous

	<b>Swivel limitation set -</b>	12 823 970 90
--	--------------------------------	---------------

### Recommended miscellaneous

	<b>Strainer waste with control handle - Dark Chrome</b>	10 712 970-19
--	---	---------------

### Recommended miscellaneous

	<b>Dispenser without rosette - Dark Chrome</b>	82 424 970-19
--	--	---------------

33 870 875

mm [inches]



### Flow rate chart



### Codes & Standards

DIN 4109

Executive Order  
no. 1007

ISO 3822

Ü-Zeichen



## TARA ULTRA Single-lever mixer Pull-down with spray function - Dark Chrome

---

TARA ULTRA

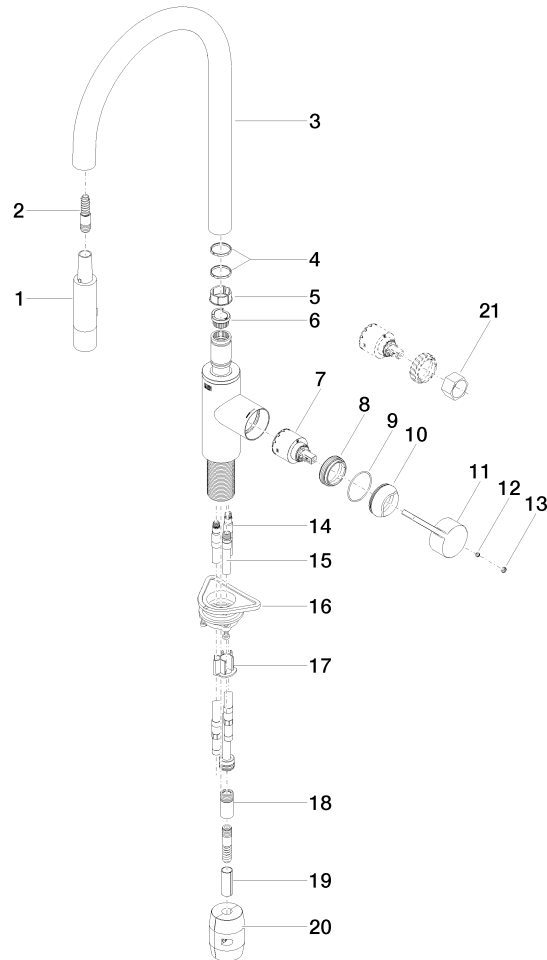
33 870 875

### Certificates

---

LGA\_28

GDV\_0400





## Spare parts list