

TARA ULTRA Single-lever mixer Pull-down with spray function - Champagne (22kt Gold)

TARA ULTRA

33 870 875 Product version from 2/26/2015



- 240mm projection
- pivotable spout 360°
- Optional swivel limiter available with swivel limiter set 12 823 970 90
- laminar and spray flow
- height of mixer 500 mm
- height up to laminar flow regulator 240 mm
- hole diameter 35 mm
- 1800 mm metal shower hose
- sprayface with anti-scaling system
- max. flow 10.4 l/min at 3 bar flow pressure
- lead-free
- Flow modes can be changed while the water is running
- This product can help a building meet the requirements of Green Building Rating Systems, e.g. LEED®, BREEAM®, DGNB

Intrinsic protection against back flow.

| | | |
|--|--------------------------------|---------------|
| | Champagne (22kt Gold) | 33 870 875-47 |
| | Chrome | 33 870 875-00 |
| | Brushed Platinum | 33 870 875-06 |
| | Platinum | 33 870 875-08 |
| | Durabronze (23kt Gold) | 33 870 875-09 |
| | Dark Chrome | 33 870 875-19 |
| | Brushed Durabronze (23kt Gold) | 33 870 875-28 |
| | Matte Black | 33 870 875-33 |
| | Brushed Bronze | 33 870 875-42 |
| | Brushed Champagne (22kt Gold) | 33 870 875-46 |
| | Brushed Chrome | 33 870 875-93 |
| | Brushed Dark Platinum | 33 870 875-99 |

Recommended miscellaneous

Swivel limitation set -

12 823 970 90



Recommended miscellaneous

Strainer waste with control handle - Champagne (22kt Gold)

10 712 970-47

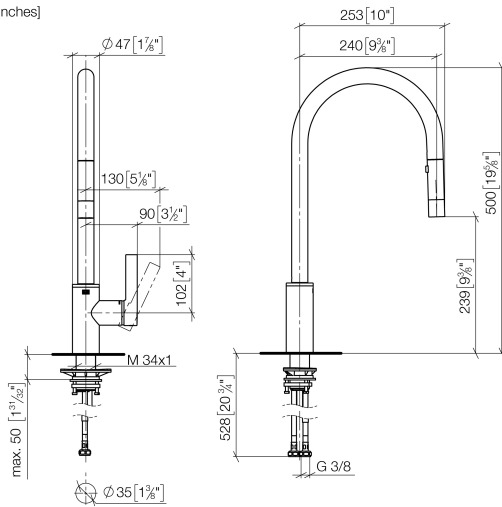


TARA ULTRA Single-lever mixer Pull-down with spray function - Champagne (22kt Gold)

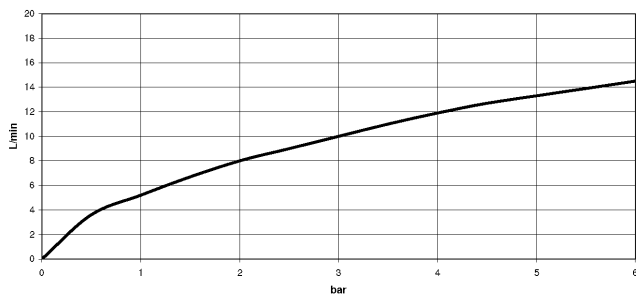
TARA ULTRA

33 870 875 Product version from 2/26/2015

mm [inches]



Flow rate chart



Codes & Standards

DIN 4109

Executive Order
no. 1007

ISO 3822

Ü-Zeichen



TARA ULTRA Single-lever mixer Pull-down with spray function - Champagne (22kt Gold)

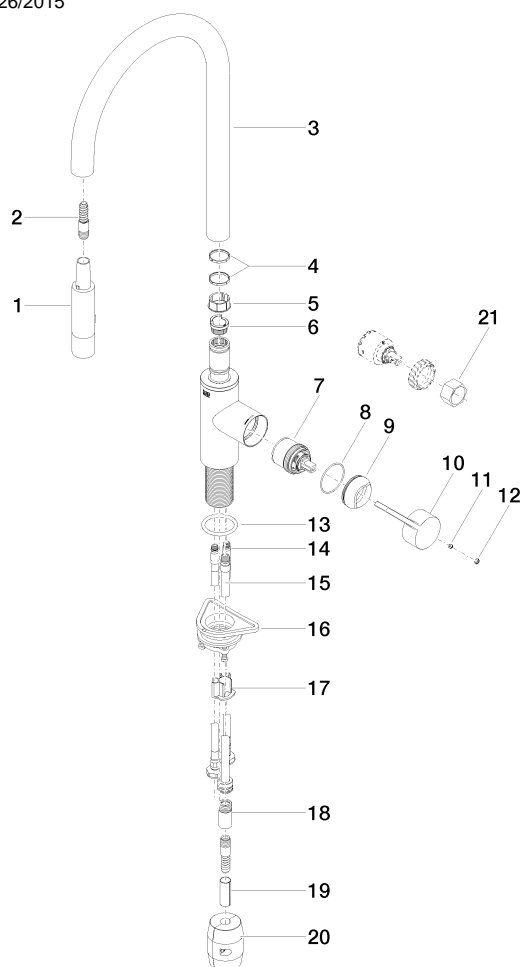
TARA ULTRA

33 870 875 Product version from 2/26/2015

Certificates and sustainability

LGA_28

GDV_0400



Spare parts list

| No. | Item Number | Name | Quantity used | Delivery time |
|-----|-----------------------|-------------|---------------|---------------|
| | 18 90 24 03 253 00 90 | adaptor | 1.00 | 2 |
| | 12 90 31 20 087 00-47 | plug | 1.00 | 30 |
| | 3 90 28 22 304 00-47 | spout | 1.00 | 30 |
| | 2 04 30 02 120 00-85 | hose | 1.00 | 10 |
| | 5 09 18 40 186 90 | sleeve | 1.00 | 2 |
| | 19 09 30 03 038 90 | hose | 1.00 | 2 |
| | 16 04 30 11 040 00 90 | fixing set | 1.00 | 2 |
| | 17 09 20 93 056 90 | insert | 1.00 | 2 |
| | 14 04 30 04 101 00 90 | hose | 2.00 | 2 |
| | 13 09 14 10 036 90 | seal | 1.00 | 2 |
| | 8 09 14 10 190 90 | seal | 1.00 | 2 |
| | 6 09 30 11 203 90 | ring | 1.00 | 2 |
| | 20 04 21 50 010 00 90 | accessories | 1.00 | 2 |
| | 15 04 28 20 067 00 90 | pipe | 1.00 | 2 |
| | 9 09 28 30 030-47 | cover | 1.00 | 60 |
| | 4 09 28 10 160 90 | ring | 2.00 | 2 |
| | 10 09 20 87 020-47 | handle | 1.00 | 30 |
| | 11 90 31 11 063 00 90 | pin | 1.00 | 2 |
| | 21 90 30 09 031 00 90 | key | 1.00 | 2 |
| | 1 90 12 11 148 00-47 | shower | 1.00 | 60 |
| | 7 90 15 05 064 05 90 | cartridge | 1.00 | 2 |