

**TARA Single-lever mixer Pull-down with spray function - Platinum**

TARA

33 870 888 Product version from 2/1/2023 to 10/30/2024



- 240mm projection
- pivotable spout 360°
- Optional swivel limiter available with swivel limiter set 12 823 970 90
- laminar and spray flow
- 1800 mm metal shower hose
- sprayface with anti-scaling system
- max. flow 10.4 l/min at 3 bar flow pressure
- lead-free
- Flow modes can be changed while the water is running
- This product can help a building meet the requirements of Green Building Rating Systems, e.g. LEED®, BREEAM®, DGNB

Intrinsic protection against back flow.

	Platinum	33 870 888-08
	Chrome	33 870 888-00
	Brushed Platinum	33 870 888-06
	Durabronze (23kt Gold)	33 870 888-09
	Dark Chrome	33 870 888-19
	Brushed Durabronze (23kt Gold)	33 870 888-28
	Matte Black	33 870 888-33
	Brushed Bronze	33 870 888-42
	Brushed Champagne (22kt Gold)	33 870 888-46
	Champagne (22kt Gold)	33 870 888-47
	Brushed Chrome	33 870 888-93
	Brushed Dark Platinum	33 870 888-99

**Recommended miscellaneous**

**Swivel limitation set -**

12 823 970 90

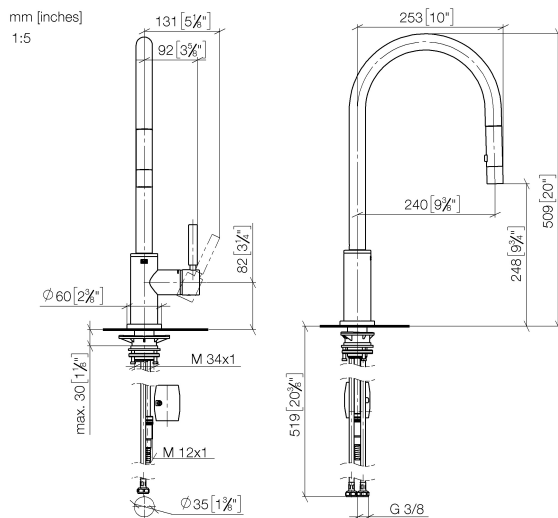


**Recommended miscellaneous**

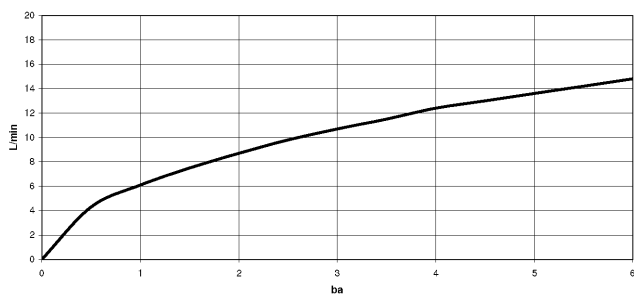
**Strainer waste with control handle - Platinum** 10 710 970-08



33 870 888 Product version from 2/1/2023 to 10/30/2024



**Flow rate chart**



**Codes & Standards**

DIN 4109

EN 1717

ISO 3822

Ü-Zeichen



## TARA Single-lever mixer Pull-down with spray function - Platinum

---

TARA

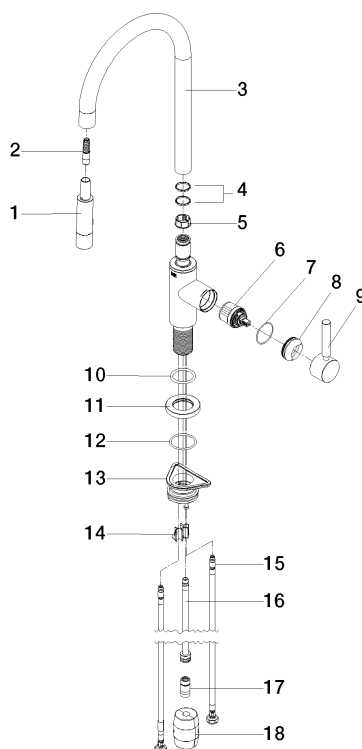
33 870 888 Product version from 2/1/2023 to 10/30/2024

### Certificates and sustainability

---

LGA\_38

Belgaqua\_24-005-2



## Spare parts list

No.	Item Number	Name	Quantity used	Delivery time
	4 09 28 10 160 90	ring	2.00	2
	2 04 30 02 120 00-85	hose	1.00	10
	5 09 18 40 186 90	sleeve	1.00	2
	3 90 28 22 304 00-08	spout	1.00	40
	8 09 28 30 030-08	cover	1.00	40
	7 09 14 10 190 90	seal	1.00	2
	13 04 30 11 040 00 90	fixing set	1.00	2
	12 09 14 10 050 90	seal	1.00	2
	14 09 20 93 056 90	insert	1.00	2
	11 90 27 22 047 00-08	rosette	1.00	-
Spare part can no longer be ordered, please order the replacement item				
	10 09 14 10 036 90	seal	1.00	2
	18 04 21 50 010 00 90	accessories	1.00	2
	16 04 28 20 067 00 90	pipe	1.00	2
	15 04 30 04 101 00 90	hose	2.00	2
	1 90 12 11 148 00-08	shower	1.00	60
	9 90 20 66 027 00-08	handle	1.00	40
	17 90 24 03 253 00 90	adaptor	1.00	2
	6 90 15 05 064 05 90	cartridge	1.00	2