

SYNC Single-lever mixer Pull-down with spray function - Platinum

SYNC

33 870 895

Product version from 2/26/2015




- 240mm projection
- pivotable spout 360°
- Optional swivel limiter available with swivel limiter set 12 821 970 90
- laminar and spray flow
- height of mixer 444 mm
- height up to laminar flow regulator 240 mm
- hole diameter 35 mm
- 1800 mm metal shower hose
- sprayface with anti-scaling system
- max. flow 10.4 l/min at 3 bar flow pressure
- lead-free
- Flow modes can be changed while the water is running
- This product can help a building meet the requirements of Green Building Rating Systems, e.g. LEED®, BREEAM®, DGNB


Intrinsic protection against back flow.

| | | |
|---|--------------------------------|---------------|
|  | Platinum | 33 870 895-08 |
|  | Chrome | 33 870 895-00 |
|  | Brushed Platinum | 33 870 895-06 |
|  | Durabronze (23kt Gold) | 33 870 895-09 |
|  | Dark Chrome | 33 870 895-19 |
|  | Brushed Durabronze (23kt Gold) | 33 870 895-28 |
|  | Matte Black | 33 870 895-33 |
|  | Brushed Bronze | 33 870 895-42 |
|  | Brushed Champagne (22kt Gold) | 33 870 895-46 |
|  | Champagne (22kt Gold) | 33 870 895-47 |
|  | Brushed Chrome | 33 870 895-93 |
|  | Brushed Dark Platinum | 33 870 895-99 |

Recommended miscellaneous

| | | |
|---|-------------------------|---------------|
|  | Swivel limitation set - | 12 821 970 90 |
|---|-------------------------|---------------|

Recommended miscellaneous

| | | |
|---|---|---------------|
|  | Strainer waste with control handle - Platinum | 10 712 970-08 |
|---|---|---------------|

33 870 895 Product version from 2/26/2015



Flow rate chart



Codes & Standards

DIN 4109

EN 1717

Executive Order
no. 1007

ISO 3822

Ü-Zeichen



SYNC Single-lever mixer Pull-down with spray function - Platinum

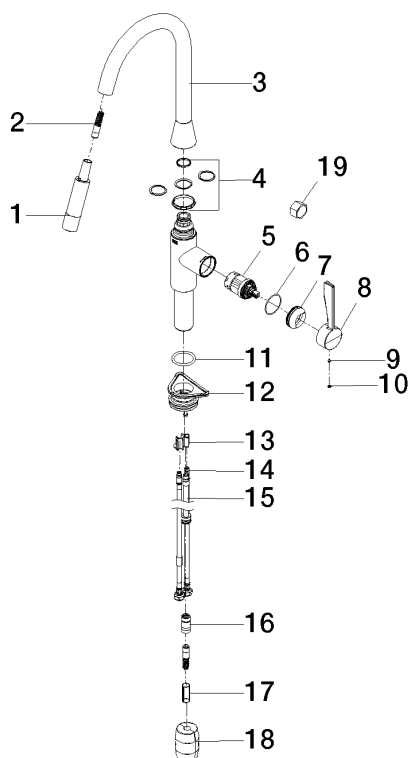
SYNC

33 870 895 Product version from 2/26/2015

Certificates and sustainability

Belgaqua_21-027-2 LGA_28

GDV_0400



Spare parts list

| No. | Item Number | Name | Quantity used | Delivery time |
|-----|--------------------|-------------------------|---------------|---------------|
| 17 | 09 30 03 038 90 | hose | 1.00 | 2 |
| 6 | 09 14 10 190 90 | seal | 1.00 | 2 |
| 10 | 90 31 20 087 00-08 | plug | 1.00 | 40 |
| 16 | 90 24 03 253 00 90 | adaptor | 1.00 | 2 |
| 3 | 90 28 22 302 00-08 | spout | 1.00 | 40 |
| 8 | 09 20 89 020-08 | handle | 1.00 | 40 |
| 18 | 04 21 50 010 00 90 | accessories | 1.00 | 2 |
| 7 | 09 28 30 030-08 | cover | 1.00 | 40 |
| 19 | 90 30 09 031 00 90 | key | 1.00 | 2 |
| 9 | 90 31 11 063 00 90 | pin | 1.00 | 2 |
| 4 | 12 821 970 90 | Swivel limitation set - | 1.00 | 2 |
| 13 | 09 20 93 056 90 | insert | 1.00 | 2 |
| 14 | 04 30 04 101 00 90 | hose | 2.00 | 2 |
| 11 | 09 14 10 036 90 | seal | 1.00 | 2 |
| 12 | 04 30 11 040 00 90 | fixing set | 1.00 | 2 |
| 5 | 90 15 05 046 05 90 | cartridge | 1.00 | 2 |
| 1 | 90 12 11 184 00-08 | shower | 1.00 | 40 |
| 15 | 04 28 20 067 00 90 | pipe | 1.00 | 2 |
| 2 | 04 30 02 120 00-08 | hose | 1.00 | - |

Spare part can no longer be ordered, please order the replacement item