

ELIO Single-lever mixer Pull-out with spray function - Chrome

ELIO

33 871 790 Product version from 4/1/2024



- 219mm projection
- pivoting spout 360°
- air-enriched flow and spray flow
- height of mixer 337 mm
- height up to aerator 292 mm
- hole diameter 35 mm
- fabric braided hose 1500 mm
- max. flow 8 l/min at 3 bar flow pressure
- lead-free
- This product can help a building meet the requirements of Green Building Rating Systems, e.g. LEED®, BREEAM®, DGNB

Intrinsic protection against back flow.

| | | |
|--|--------------------------------|---------------|
|  | Chrome | 33 871 790-00 |
|  | Brushed Platinum | 33 871 790-06 |
|  | Platinum | 33 871 790-08 |
|  | Dark Chrome | 33 871 790-19 |
|  | Brushed Durabronze (23kt Gold) | 33 871 790-28 |
|  | Brushed Bronze | 33 871 790-42 |
|  | Brushed Champagne (22kt Gold) | 33 871 790-46 |
|  | Champagne (22kt Gold) | 33 871 790-47 |
|  | Brushed Chrome | 33 871 790-93 |
|  | Brushed Dark Platinum | 33 871 790-99 |

Recommended miscellaneous

Strainer waste with control handle - Chrome 10 712 970-00

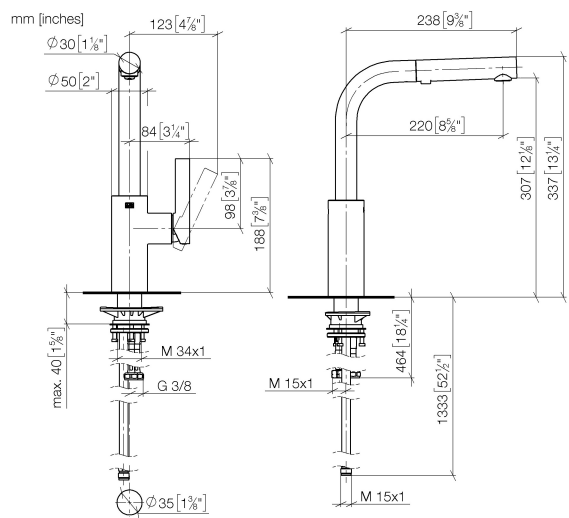


Recommended miscellaneous

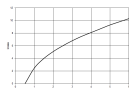
Dispenser without rosette - Chrome 82 424 970-00



33 871 790 Product version from 4/1/2024



Flow rate chart



Codes & Standards

DIN 4109

ISO 3822

Ü-Zeichen



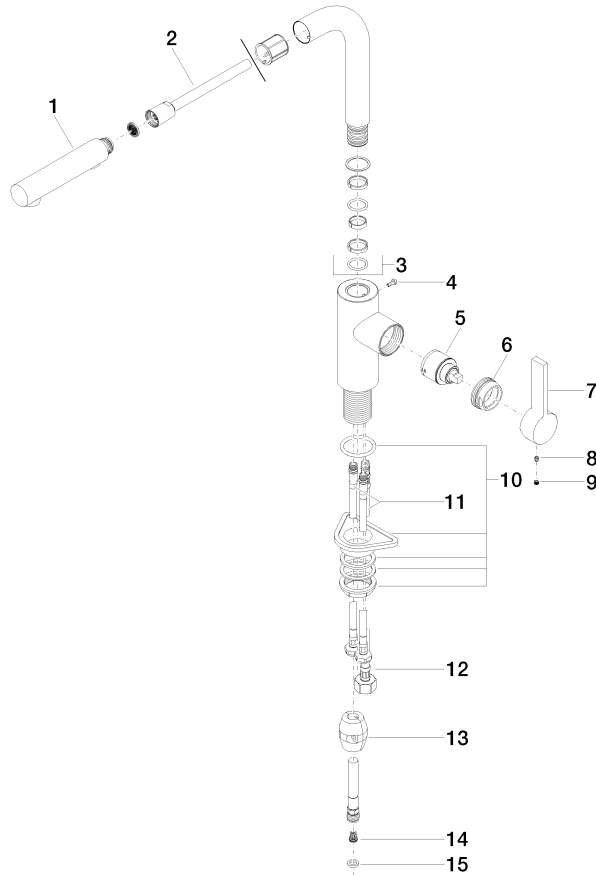
ELIO Single-lever mixer Pull-out with spray function - Chrome

ELIO

33 871 790 Product version from 4/1/2024

Certificates and sustainability

LGA_38



Spare parts list

| No. | Item Number | Name | Quantity used | Delivery time |
|-----|--------------------|---------------------|---------------|---------------|
| 1 | 90 12 11 185 00-00 | shower | 1.00 | 10 |
| 10 | 04 30 11 040 00 90 | fixing set | 1.00 | 2 |
| 14 | 09 23 01 131 90 | back-flow preventer | 1.00 | 2 |
| 7 | 09 24 04 141-00 | nut | 2.00 | 10 |
| 8 | 90 31 11 030 00 90 | pin | 1.00 | 2 |
| 2 | 90 30 02 062 00-00 | hose | 1.00 | 10 |
| 13 | 04 21 50 005 00 90 | accessories | 1.00 | 2 |
| 3 | 90 28 22 186 00-00 | spout | 1.00 | 10 |
| 15 | 90 14 20 019 00 90 | seal | 1.00 | 2 |
| 12 | 04 30 04 029 00 90 | hose | 1.00 | 2 |
| 5 | 90 15 05 045 00 90 | cartridge | 1.00 | 2 |
| 11 | 04 30 04 104 00 90 | hose | 2.00 | 2 |
| 4 | 09 30 30 054 90 | screw | 1.00 | 2 |
| 9 | 90 31 20 109 00 90 | plug | 1.00 | 2 |