

Concealed single-lever mixer with diverter - Brushed Platinum

SERIES SPECIFIC

36 120 670 Product version up to 3/15/2019



- automatic diverter
- cover plate 150 x 90 mm
- WRAS

| | | |
|---|-------------------------------|---------------|
|  | Brushed Platinum | 36 120 670-06 |
|  | Chrome | 36 120 670-00 |
|  | Platinum | 36 120 670-08 |
|  | Dark Chrome | 36 120 670-19 |
|  | Brushed Light Gold | 36 120 670-27 |
|  | Brushed Durabrass (23kt Gold) | 36 120 670-28 |
|  | Matte Black | 36 120 670-33 |
|  | Brushed Dark Brass | 36 120 670-39 |
|  | Brushed Champagne (22kt Gold) | 36 120 670-46 |
|  | Champagne (22kt Gold) | 36 120 670-47 |
|  | Brushed Chrome | 36 120 670-93 |
|  | Brushed Dark Platinum | 36 120 670-99 |

Required miscellaneous



Concealed single-lever mixer with backflow preventor -

- max. recess depth 105 mm
- min. recess depth 80 mm

35 021 970 90

Recommended miscellaneous



xGRID Attachment set for integrating in the dry wall construction -

12 340 970 90

Required miscellaneous



Concealed single-lever mixer -

- max. recess depth 105 mm
- min. recess depth 80 mm

35 020 970 90

Required miscellaneous

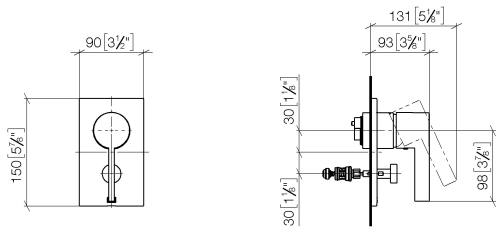


xGRID Installation track 555 mm -

12 360 970 90

36 120 670 Product version up to 3/15/2019

mm [inches]



Flow rate chart



Codes & Standards

DIN 4109

ISO 3822

Scottish Water
Byelaws

UK Water Supply
Regulations

Ü-Zeichen



Concealed single-lever mixer with diverter - Brushed Platinum

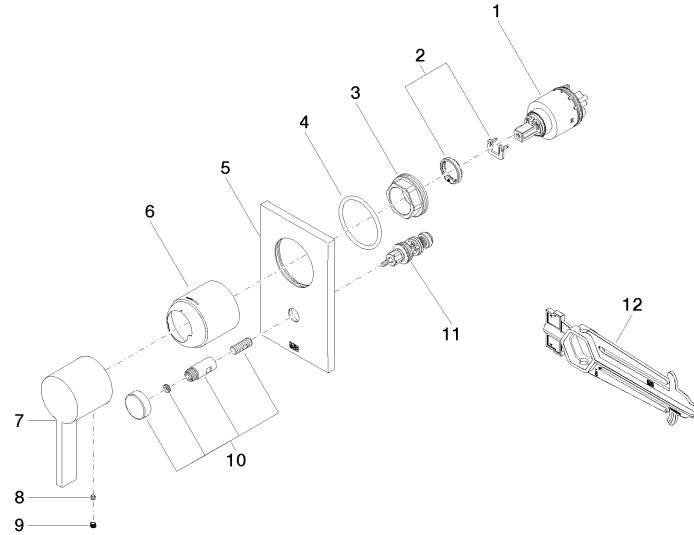
SERIES SPECIFIC

36 120 670 Product version up to 3/15/2019

Certificates and sustainability

LGA_19

WRAS_2207



Spare parts list

| No. | Item Number | Name | Quantity used | Delivery time |
|-----|-----------------------|-------------|---------------|---------------|
| | 10 90 31 09 139 00-06 | pull-rod | 1.00 | 10 |
| | 11 90 21 34 081 00 90 | diverter | 1.00 | 2 |
| | 2 04 28 10 149 00 90 | accessories | 1.00 | 2 |
| | 7 09 20 67 007-06 | handle | 1.00 | 10 |
| | 3 09 24 04 448 90 | nut | 1.00 | 2 |
| | 4 09 14 10 084 90 | seal | 1.00 | 2 |
| | 6 09 11 02 260-06 | sleeve | 1.00 | 10 |
| | 8 09 31 11 099 90 | pin | 1.00 | 2 |
| | 5 09 11 02 258-06 | plate | 1.00 | 10 |
| | 1 90 15 05 038 00 90 | cartridge | 1.00 | 60 |
| | 12 90 30 09 064 00 90 | key | 1.00 | 2 |
| | 9 90 31 20 109 00 90 | plug | 1.00 | 2 |