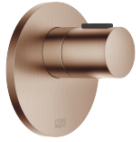


xTOOL Concealed thermostat without volume control 3/4" - Brushed Bronze

36 503 979 Product version from 9/1/2022



- cover plate Ø 124 mm
- temperature control handle with safety limit stop at 38°C
- thermostat cartridge
- WRAS

| | | |
|--|--------------------------------|---------------|
| | Brushed Bronze | 36 503 979-42 |
| | Chrome | 36 503 979-00 |
| | Brushed Platinum | 36 503 979-06 |
| | Platinum | 36 503 979-08 |
| | Durabronze (23kt Gold) | 36 503 979-09 |
| | Dark Chrome | 36 503 979-19 |
| | Light Gold | 36 503 979-26 |
| | Brushed Light Gold | 36 503 979-27 |
| | Brushed Durabronze (23kt Gold) | 36 503 979-28 |
| | Matte Black | 36 503 979-33 |
| | Brushed Champagne (22kt Gold) | 36 503 979-46 |
| | Champagne (22kt Gold) | 36 503 979-47 |
| | Brushed Chrome | 36 503 979-93 |
| | Brushed Dark Platinum | 36 503 979-99 |

Required miscellaneous



xTOOL Concealed thermostat module without volume control - 35 503 970 90

- min. recess depth mm
- max. recess depth mm

Recommended miscellaneous



xGRID Attachment set for integrating in the dry wall construction - 12 340 970 90

Required miscellaneous



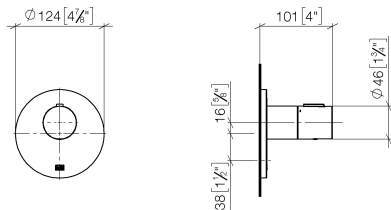
xGRID Installation track 555 mm - 12 360 970 90

xTOOL Concealed thermostat without volume control 3/4" - Brushed Bronze

36 503 979

Product version from 9/1/2022

mm [inches]



Flow rate chart



Codes & Standards

| | | | |
|-----------------------------|-----------|----------|------------------------|
| DIN 4109 | EN 1111 | ISO 3822 | Scottish Water Byelaws |
| UK Water Supply Regulations | Ü-Zeichen | | |



xTOOL Concealed thermostat without volume control 3/4" - Brushed Bronze

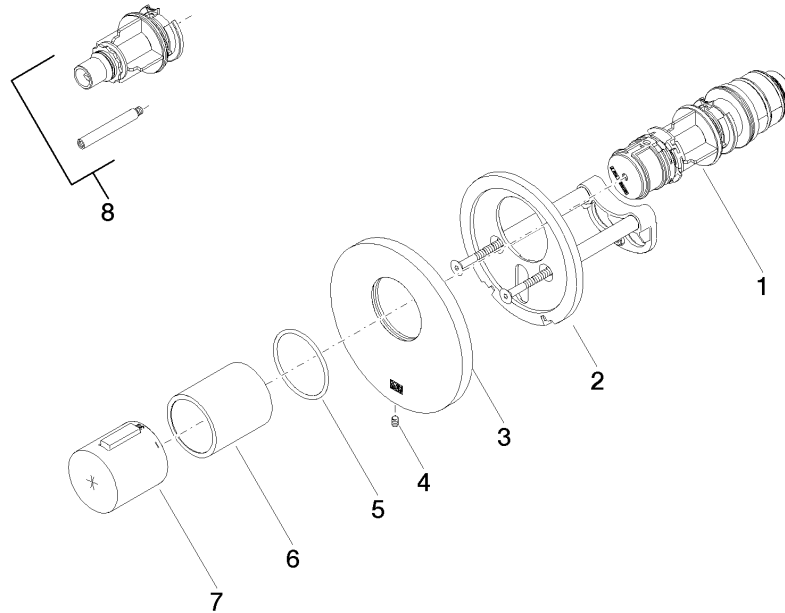
36 503 979 Product version from 9/1/2022

Certificates

| | | |
|-----------|---------------------|--------|
| WRAS_2011 | DVGW_DW- 6512DN0 | LGA_29 |
|-----------|---------------------|--------|

xTOOL Concealed thermostat without volume control 3/4" - Brushed Bronze

36 503 979 Product version from 9/1/2022



Spare parts list

| No. | Item Number | Name | Quantity used | Delivery time |
|-----|--------------------|-------------------|---------------|---------------|
| 1 | 90 15 02 063 00 90 | cartridge | 1 | 2 |
| 2 | 90 11 01 196 00 90 | base | 1 | 2 |
| 3 | 09 11 02 537-42 | cover | 1 | 30 |
| 4 | 09 31 11 048 90 | pin | 1 | 2 |
| 5 | 90 14 10 049 00 90 | seal | 1 | 2 |
| 6 | 90 21 02 112 00-42 | sleeve | 1 | 30 |
| 7 | 90 17 33 020 00-42 | handle | 1 | 30 |
| 8 | 12 178 970 90 | Extension 46 mm - | 1 | 2 |