


## WATER POINTS Concealed body spray - Light Gold

SERIES-VARIOUS

36 525 979 Product version from 10/1/2023



- HORIZONTAL RAIN, max. flow rate 9 l/min (at 3 bar)
- with anti-scale system
- cover plate 120 x 120 mm

|   |                                |               |
|---|--------------------------------|---------------|
|    | Light Gold                     | 36 525 979-26 |
|    | Chrome                         | 36 525 979-00 |
|    | Brushed Platinum               | 36 525 979-06 |
|    | Platinum                       | 36 525 979-08 |
|    | Dark Chrome                    | 36 525 979-19 |
|    | Brushed Light Gold             | 36 525 979-27 |
|    | Brushed Durabronze (23kt Gold) | 36 525 979-28 |
|    | Matte Black                    | 36 525 979-33 |
|    | Brushed Bronze                 | 36 525 979-42 |
|   | Brushed Champagne (22kt Gold)  | 36 525 979-46 |
|  | Champagne (22kt Gold)          | 36 525 979-47 |
|  | Brushed Chrome                 | 36 525 979-93 |
|  | Brushed Dark Platinum          | 36 525 979-99 |

### Required miscellaneous



- Concealed wall installation box -** 35 205 970 90
- min. recess depth 85 mm
  - max. recess depth 110 mm

### Recommended miscellaneous



- xGRID Attachment set for integrating in the dry wall construction -** 12 340 970 90

### Required miscellaneous



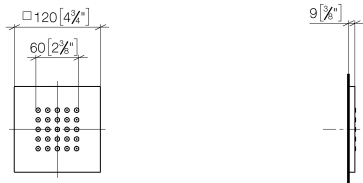
- xGRID Installation track 555 mm -** 12 360 970 90

### Required miscellaneous

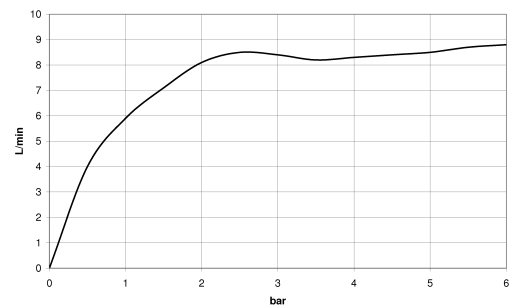


- WATER POINTS Adapter plate -** 12 305 970 90

mm [inches]



Flow rate chart



Codes & Standards

|          |          |           |
|----------|----------|-----------|
| DIN 4109 | ISO 3822 | Ü-Zeichen |
|----------|----------|-----------|



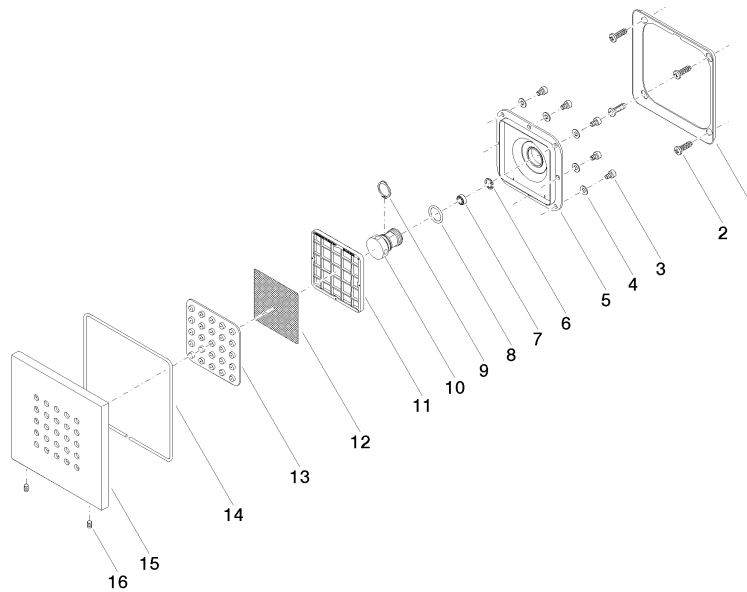
## WATER POINTS Concealed body spray - Light Gold

SERIES-VARIOUS

36 525 979 Product version from 10/1/2023

Certificates and sustainability

LGA\_38



## Spare parts list

| No. | Item Number        | Name         | Quantity used | Delivery time |
|-----|--------------------|--------------|---------------|---------------|
|     | 9 09 16 01 017 90  | ring         | 1.00          | 2             |
|     | 5 09 12 12 205 90  | base         | 1.00          | 2             |
|     | 12 09 29 30 043 90 | insert       | 1.00          | 2             |
|     | 3 09 30 30 031 90  | screw        | 8.00          | 2             |
|     | 8 09 14 10 130 90  | seal         | 1.00          | 2             |
|     | 15 09 27 98 004-26 | rosette      | 1.00          | 60            |
|     | 7 09 23 01 136 90  | flow reducer | 1.00          | 2             |
|     | 10 09 17 11 146 90 | distributor  | 1.00          | 60            |
|     | 14 09 14 03 117 90 | seal         | 1.00          | 2             |
|     | 4 09 30 11 024 90  | disc         | 8.00          | 2             |
|     | 6 09 16 01 016 90  | ring         | 1.00          | 2             |
|     | 2 09 30 31 022 90  | screw        | 4.00          | 2             |
|     | 13 09 12 01 075 90 | insert       | 1.00          | 2             |
|     | 11 09 17 97 057 90 | holder       | 1.00          | 2             |
|     | 16 09 31 11 048 90 | pin          | 2.00          | 2             |
|     | 1 09 28 01 024 90  | holder       | 1.00          | 2             |