



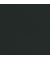


EDITION PRO Wall-mounted single-lever basin mixer without pop-up waste -
Matte Black

EDITION PRO

36 810 626



- 170mm projection
- fixed spout
- circular, air-enriched flow
- hole diameter spout 37 mm
- hole diameter single-lever mixer 57 mm
- rosette for spout Ø 55mm
- rosette for mixer Ø 78mm
- max. flow 7 l/min
- lead-free
- WRAS

| | | |
|---|----------------|---------------|
|  | Matte Black | 36 810 626-33 |
|  | Chrome | 36 810 626-00 |
|  | Brushed Chrome | 36 810 626-93 |

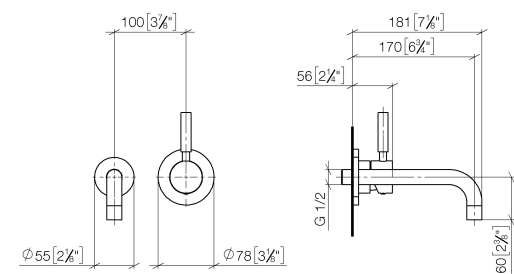
Required miscellaneous



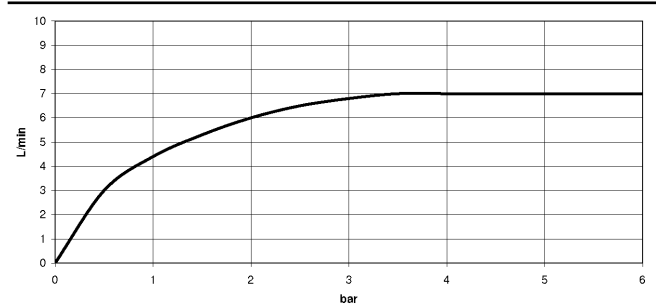
- SERIES SPECIFIC Concealed wall-mounted single-lever mixer mixer on right -**
- 35 870 970 90
- max. recess depth 95 mm
 - min. recess depth 80 mm

36 810 626

mm [inches]



Flow rate chart



Codes & Standards

| | | | |
|----------|----------|------------------------|-----------------------------|
| DIN 4109 | ISO 3822 | Scottish Water Byelaws | UK Water Supply Regulations |
|----------|----------|------------------------|-----------------------------|

Ü-Zeichen



EDITION PRO Wall-mounted single-lever basin mixer without pop-up waste - Matte Black

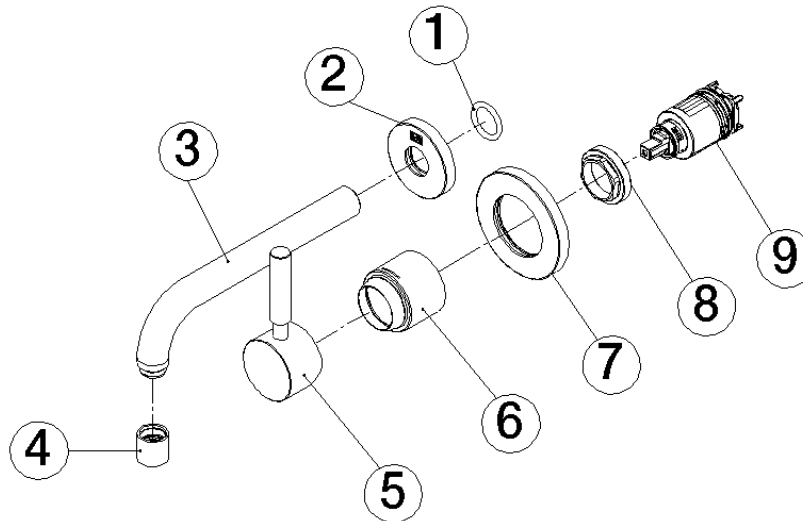
EDITION PRO

36 810 626

Certificates and sustainability

WRAS_2107

LGA_9



Spare parts list

| No. | Item Number | Name | Quantity used | Delivery time |
|-----|--------------------|-----------|---------------|---------------|
| 3 | 04 28 22 115 10-33 | spout | 1.00 | 30 |
| 4 | 90 23 01 019 00-33 | aerator | 1.00 | 30 |
| 6 | 09 11 02 522-33 | cover | 1.00 | 30 |
| 2 | 09 27 22 503-33 | rosette | 1.00 | 30 |
| 5 | 90 20 62 040 00-33 | handle | 1.00 | 30 |
| 1 | 90 14 10 026 00 90 | seal | 1.00 | 2 |
| 7 | 90 27 62 011 00-33 | rosette | 1.00 | 30 |
| 9 | 90 15 05 064 01 90 | cartridge | 1.00 | 2 |
| 8 | 09 24 04 105 90 | nut | 1.00 | 2 |