





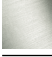
EDITION PRO Wall-mounted single-lever basin mixer without pop-up waste -
Matte Black

EDITION PRO

36 812 626



- 200mm projection
- fixed spout
- circular, air-enriched flow
- hole diameter spout 37 mm
- hole diameter single-lever mixer 57 mm
- rosette for spout Ø 55mm
- rosette for mixer Ø 78mm
- max. flow 7 l/min
- lead-free
- WRAS

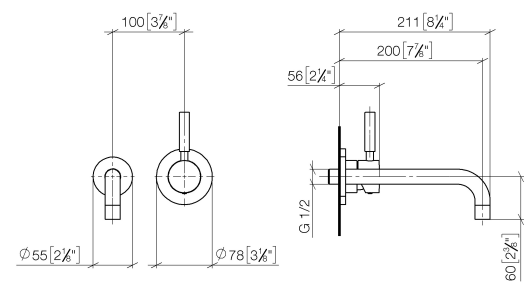
	Matte Black	36 812 626-33
	Chrome	36 812 626-00
	Brushed Chrome	36 812 626-93

Required miscellaneous

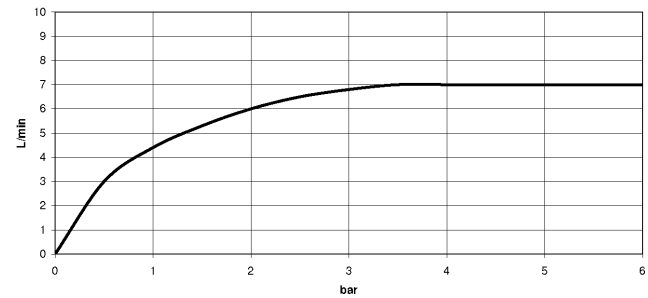


- SERIES SPECIFIC Concealed wall-mounted single-lever mixer mixer on right -** 35 870 970 90
- max. recess depth 95 mm
 - min. recess depth 80 mm

36 812 626
mm [inches]



Flow rate chart



Codes & Standards

DIN 4109	ISO 3822	Scottish Water Byelaws	UK Water Supply Regulations
----------	----------	---------------------------	--------------------------------

Ü-Zeichen



EDITION PRO Wall-mounted single-lever basin mixer without pop-up waste - Matte Black

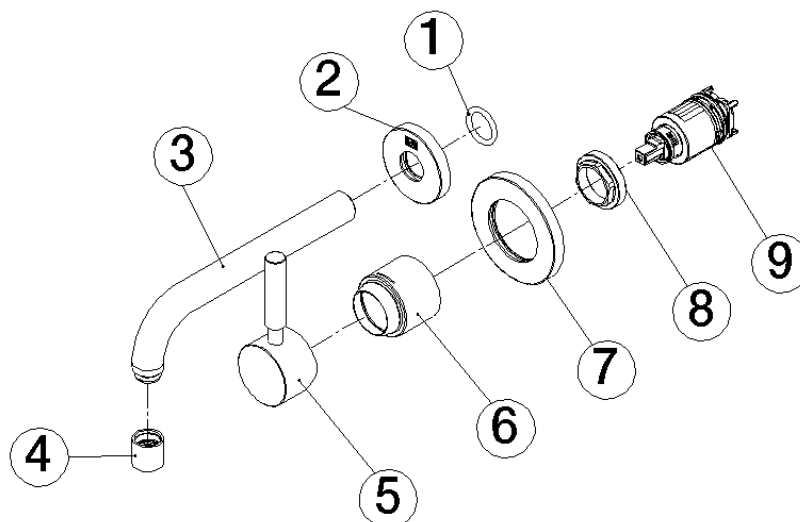
EDITION PRO

36 812 626

Certificates and sustainability

WRAS_2107

LGA_9



Spare parts list

No.	Item Number	Name	Quantity used	Delivery time
3	04 28 22 116 10-33	spout	1.00	30
5	90 20 62 040 00-33	handle	1.00	30
2	09 27 22 503-33	rosette	1.00	30
4	90 23 01 019 00-33	aerator	1.00	30
6	09 11 02 522-33	cover	1.00	30
7	90 27 62 011 00-33	rosette	1.00	30
1	90 14 10 026 00 90	seal	1.00	2
9	90 15 05 064 01 90	cartridge	1.00	2
8	09 24 04 105 90	nut	1.00	2