

LISSÉ Wall-mounted single-lever basin mixer without pop-up waste - Dark Chrome

LISSÉ

36 860 845	Product version up to 4/1/2024		
	<ul style="list-style-type: none"> 170mm projection fixed spout circular, air-enriched flow hole diameter spout 37 mm hole diameter single-lever mixer 57 mm rosette 78 x 78 mm max. flow 5.7 l/min lead-free This product can help a building meet the requirements of Green Building Rating Systems, e.g. LEED®, BREEAM®, DGNB WRAS 	<div> <div></div> <div>Dark Chrome</div> <div>36 860 845-19</div> </div> <div> <div></div> <div>Chrome</div> <div>36 860 845-00</div> </div> <div> <div></div> <div>Brushed Platinum</div> <div>36 860 845-06</div> </div> <div> <div></div> <div>Brushed Light Gold</div> <div>36 860 845-27</div> </div> <div> <div></div> <div>Matte Black</div> <div>36 860 845-33</div> </div> <div> <div></div> <div>Brushed Chrome</div> <div>36 860 845-93</div> </div> <div> <div></div> <div>Brushed Dark Platinum</div> <div>36 860 845-99</div> </div>	

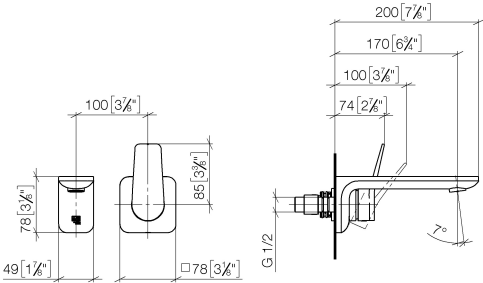


LISSE Wall-mounted single-lever basin mixer without pop-up waste - Dark Chrome

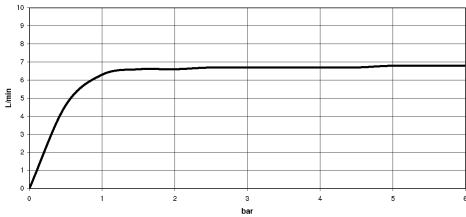
LISSE

36 860 845 Product version up to 4/1/2024

mm [inches]



Flow rate chart



Codes & Standards

ASME A112.18.1	cUPC	EN 817	EPA WaterSense
NSF372	NSF61	Scottish Water Byelaws	UK Water Supply Regulations

WaterSense





LISSE Wall-mounted single-lever basin mixer without pop-up waste - Dark Chrome

LISSE

36 860 845 Product version up to 4/1/2024

Certificates and sustainability

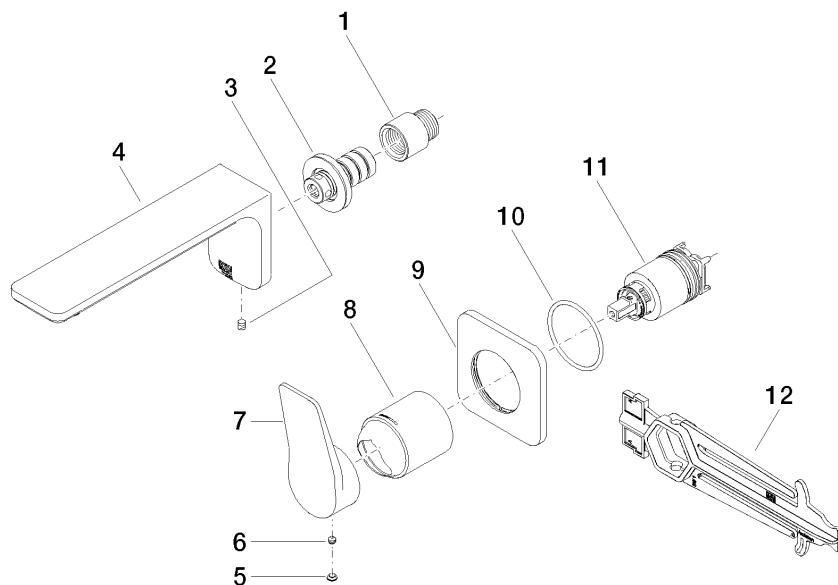
IAPMO_N-4976	DVGW_DW-6512DN0	IAPMO_6397	WRAS_2107	IAPMO_4976 (
IAPMO_8834				

LISSÉ Wall-mounted single-lever basin mixer without pop-up waste - Dark Chrome

LISSÉ

36 860 845 Product version up to 4/1/2024

Parts for other
finishes can be found
here: [Chrome](#)



Spare parts list

No.	Item Number	Name	Quantity used	Delivery time
8	09 11 02 288-19	cover	1.00	20
10	90 14 10 049 00 90	seal	1.00	2
1	09 24 03 072 10 90	nipple	1.00	2
11	90 15 05 064 01 90	cartridge	1.00	2
12	90 30 09 064 00 90	key	1.00	2
4	90 11 84 021 00-19	spout	1.00	20
5	90 31 20 087 00-19	plug	1.00	20
7	09 20 84 021-19	handle	1.00	60
2	90 24 03 108 00 90	nipple set	1.00	2
3	90 31 11 004 00 90	pin	1.00	2
6	90 31 11 063 00 90	pin	1.00	2
9	90 27 84 020 00-19	rosette	1.00	20