

## BIG RAIN Rain panel for ceiling installation or ceiling substructure installation - SERIES-VARIOUS Stainless Steel

41 400 979 Product version up to 4/1/2021



- Rain panel with 2 different spray modes
- PURIFY RAIN, 200 x 160 mm, max. flow rate 23.5 l/min (at 3 bar)
- FULL RAIN, 360 x 280 mm, max. flow rate 13.6 l/min (at 3 bar)
- cover plate, stainless steel 600 x 480 mm
- 2x flexible connection hose 1/2" - female thread
- 4x mounting pin
- pre-fitted stainless steel enclosure
- with anti-scale system

### technical data:

- minimum flow rate 25 l/min (both rain modes together)
- flow at 3bar flow pressure in conjunction with xTOOL: 39l/min
- minimum flow pressure 2 bar
- max. flow pressure 4 bar
- weight: 12kg

### technical data:

### plumbing:

- recommended water hardness: 6-7 °dH - if the water is harder, integrate a water softener that uses the ion exchange principle into the feed pipe.
- for choosing the drainage, taking into consideration the discharge of all the products in the shower, the specific demand needs to be assessed.  
Recommendation: Floor drain (connected rating) = 1l/sec, drainage rate DN 50
- feed pipe (hot/cold): 2x DN 20
- for the optimum choice of hot water storage device - taking into consideration additional drawing-off points and the frequency with which BigRain is used - the specific demand needs to be assessed.



Stainless Steel

41 400 979-85



Brushed Stainless Steel

41 400 979-86

## Recommended miscellaneous

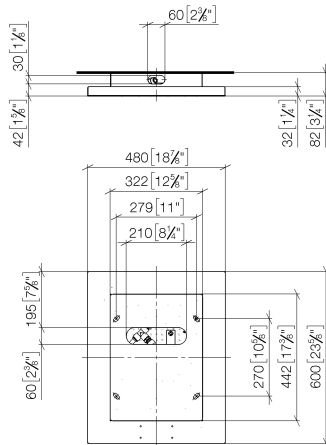


### BIG RAIN Cover for supply pipes - 12 940 979-85 Stainless Steel

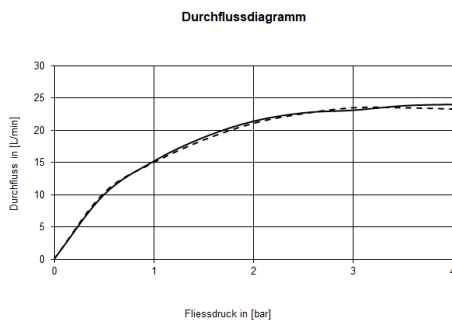
- stainless steel cover 125 x 50 mm
- length 450-480 mm
- for ceiling substructure installation

## BIG RAIN Rain panel for ceiling installation or ceiling substructure installation - SERIES-VARIOUS Stainless Steel

41 400 979 Product version up to 4/1/2021  
mm [inches]



### Flow rate chart



### Codes & Standards

DIN 4109

ISO 3822

Ü-Zeichen



## BIG RAIN Rain panel for ceiling installation or ceiling substructure installation - SERIES-VARIOUS Stainless Steel

---

41 400 979 Product version up to 4/1/2021

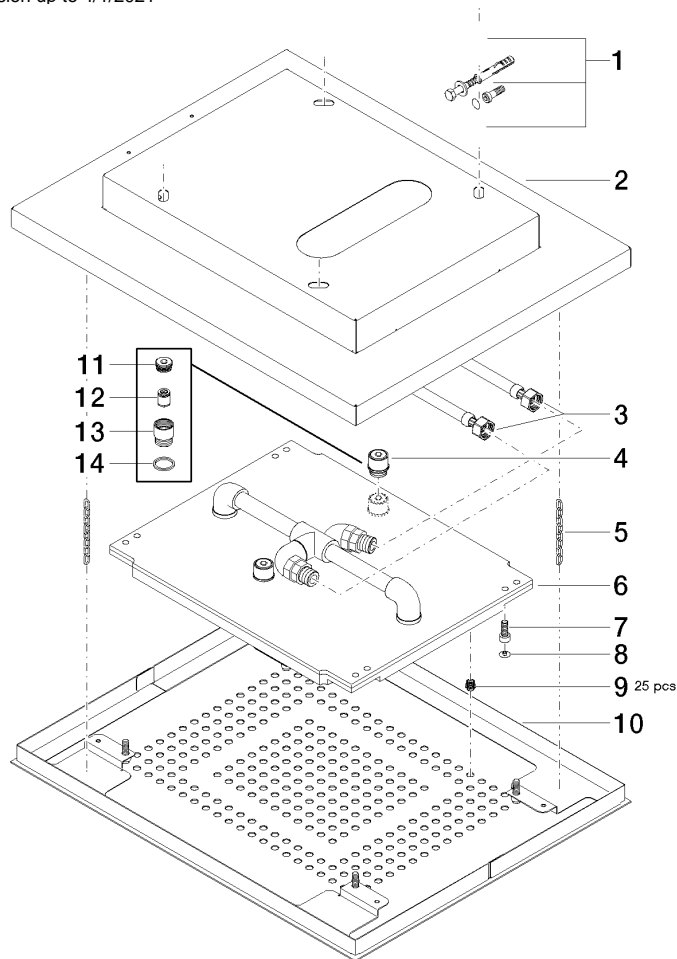
Certificates and sustainability

---

LGA\_18

# BIG RAIN Rain panel for ceiling installation or ceiling substructure installation - SERIES-VARIOUS Stainless Steel

41 400 979 Product version up to 4/1/2021



## Spare parts list

| No. | Item Number        | Name                                      | Quantity used | Delivery time |
|-----|--------------------|---|---------------|---------------|
| 1   | 04 30 35 010 00 90 | fixing set                                | 1.00          | 2             |
| 13  | 09 24 03 027 90    | nipple                                    | 1.00          | 2             |
| 2   | 04 17 09 001 00-85 | casing                                    | 1.00          | 30            |
| 11  | 09 24 04 112 10 90 | nipple                                    | 1.00          | 2             |
| 8   | 09 31 20 036 90    | plug                                      | 4.00          | 2             |
| 9   | 90 29 03 035 00 90 | insert                                    | 10.00         | 2             |
| 12  | 09 23 01 042 90    | insert                                    | 1.00          | 2             |
| 3   | 12 502 970 90      | High pressure hose 1/2" x 1/2" x 400 mm - | 1.00          | 2             |
| 14  | 09 14 20 025 90    | seal                                      | 1.00          | 2             |
| 10  | 04 11 02 113 02-85 | cover                                     | 1.00          | 30            |
| 5   | 04 21 50 004 01 90 | accessories                               | 2.00          | 2             |
| 7   | 09 30 30 155 90    | screw                                     | 4.00          | 2             |
| 4   | 90 24 03 027 02 90 | nipple                                    | 2.00          | 2             |