

**WATER SHEET Cascade spout for wall mounting - Champagne (22kt Gold)**

IMO

13 415 979



- 150mm projection
- CASCADE, max. flow rate 26.5 l/min (at 3 bar)
- cover plate 240 x 60 mm
- 1/2" connection
- plug-link mounting
- WRAS 2306001

Fits: IMO, LULU, MADISON, MEM, TARA, CL.1, LISSÉ, VAIA, META, CYO

|  |                               |               |
|--|-------------------------------|---------------|
|    | Champagne (22kt Gold)         | 13 415 979-47 |
|    | Chrome                        | 13 415 979-00 |
|    | Brushed Platinum              | 13 415 979-06 |
|    | Platinum                      | 13 415 979-08 |
|    | Dark Chrome                   | 13 415 979-19 |
|    | Light Gold                    | 13 415 979-26 |
|    | Brushed Light Gold            | 13 415 979-27 |
|    | Brushed Durabross (23kt Gold) | 13 415 979-28 |
|   | Matte Black                   | 13 415 979-33 |
|  | Brushed Bronze                | 13 415 979-42 |
|  | Brushed Champagne (22kt Gold) | 13 415 979-46 |
|  | Brushed Chrome                | 13 415 979-93 |
|  | Brushed Dark Platinum         | 13 415 979-99 |

**Recommended miscellaneous**



- Concealed wall elbow -**
- max. recess depth 163 mm
  - min. recess depth 90 mm

35 085 970 90

**Recommended miscellaneous**

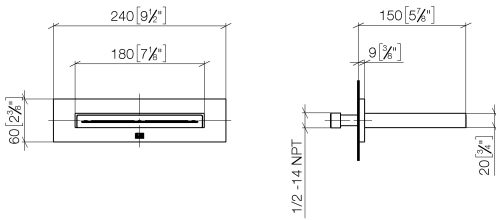


- Concealed wall elbow -**
- max. recess depth 163 mm
  - min. recess depth 90 mm

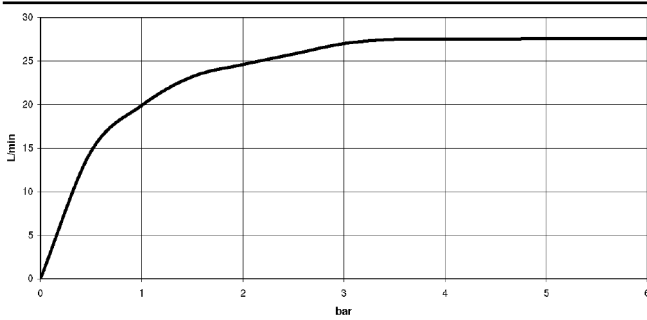
35 085 970 90

13 415 979

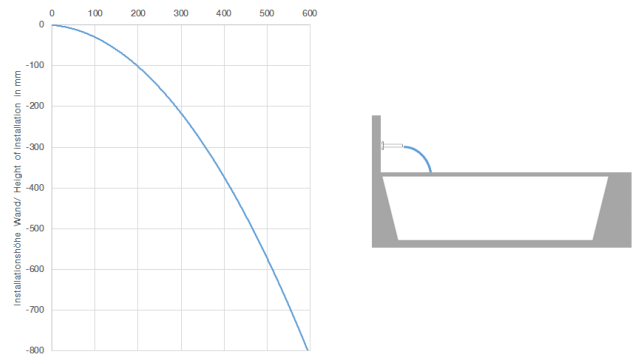
mm [inches]



Flow rate chart



Trajectory diagram



Codes & Standards

Scottish Water  
Byelaws

UK Water Supply  
Regulations



WATER SHEET Cascade spout for wall mounting - Champagne (22kt Gold)

---

IMO

13 415 979

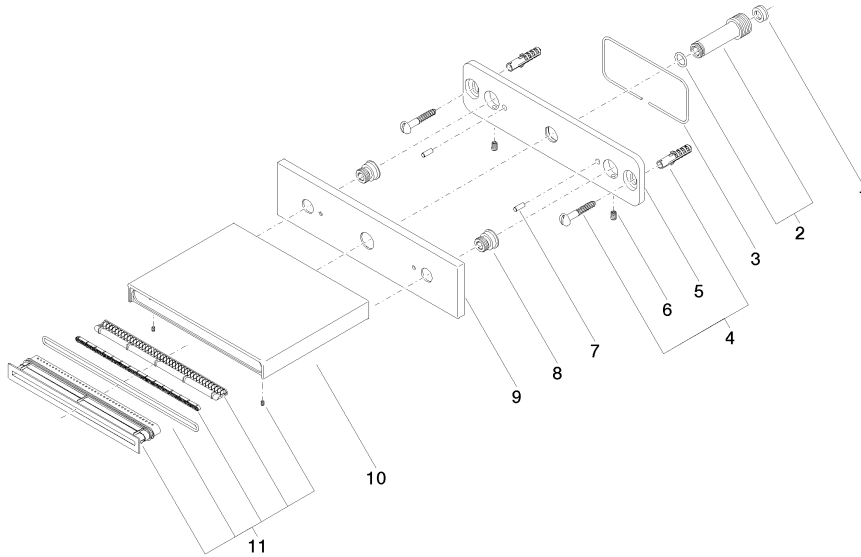
Certificates

---

WRAS\_2306

13 415 979

Product version from 10/1/2023





**WATER SHEET Cascade spout for wall mounting - Champagne (22kt Gold)**

IMO

13 415 979

**Spare parts list**

**Product version from 10/1/2023**

| No. | Item Number     | Name         | Quantity used | Delivery time |
|-----|-----------------|--------------|---------------|---------------|
|     | 09 23 01 057 90 | flow reducer | 14            | 2             |