







WATER FALL Cascade spout for wall mounting - Brushed Platinum

SERIES-VARIOUS

13 420 979
Product version from 4/1/2023




- 120mm projection
- CASCADE, max. flow rate 26.5 l/min (at 3 bar)
- cover plate 240 x 60 mm
- 1/2" connection
- plug-link mounting
- WRAS

	Brushed Platinum	13 420 979-06
	Chrome	13 420 979-00
	Platinum	13 420 979-08
	Dark Chrome	13 420 979-19
	Light Gold	13 420 979-26
	Brushed Light Gold	13 420 979-27
	Brushed Durabrass (23kt Gold)	13 420 979-28
	Matte Black	13 420 979-33
	Brushed Bronze	13 420 979-42
	Brushed Champagne (22kt Gold)	13 420 979-46
	Champagne (22kt Gold)	13 420 979-47
	Brushed Chrome	13 420 979-93

Recommended miscellaneous

	Concealed wall elbow - •max. recess depth 163 mm •min. recess depth 90 mm	35 085 970 90
---	--	---------------

Recommended miscellaneous

	Concealed wall elbow - •max. recess depth 163 mm •min. recess depth 90 mm	35 085 970 90
---	--	---------------

13 420 979 Product version from 4/1/2023

mm [inches]



Flow rate chart



Trajectory diagram



Codes & Standards

ASME A112.18.1	cUPC	DIN 4109	ISO 3822
Scottish Water Byelaws	UK Water Supply Regulations	Ü-Zeichen	



WATER FALL Cascade spout for wall mounting - Brushed Platinum

SERIES-VARIOUS

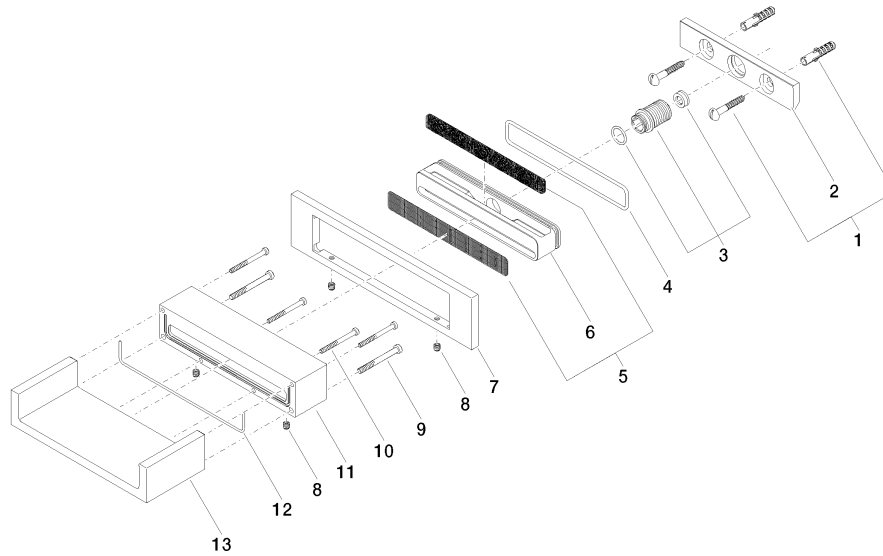
13 420 979 Product version from 4/1/2023

Certificates and sustainability

LGA_18

IAPMO_4976

WRAS_2111



Spare parts list

No.	Item Number	Name	Quantity used	Delivery time
7	09 27 97 034-06	rosette	1.00	10
11	09 30 01 104-06	casing	1.00	10
4	09 14 10 504 90	seal	1.00	2
9	09 30 30 147 90	screw	2.00	2
6	09 17 11 044 20 90	distributor	1.00	2
13	09 11 94 046-06	spout	1.00	10
8	09 31 11 049 90	pin	4.00	2
3	90 24 05 008 00 90	nipple set	1.00	2
2	09 17 97 056 90	holder	1.00	2
10	09 30 30 086 90	screw	4.00	2
1	04 30 31 024 01 90	fixing set	1.00	2
12	09 14 03 504 90	seal	1.00	2
5	90 29 30 040 00 90	insert	1.00	2