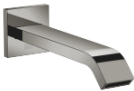


IMO Bath spout for wall mounting - Dark Chrome



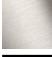




IMO

13 801 670

Product version from 4/1/2024



- 200mm projection
- rectangular normal flow
- hole diameter 37 mm
- 1/2" connection
- max. flow 25.1 l/min at 3 bar flow pressure
- WRAS

| | | |
|---|-----------------------|---------------|
|  | Dark Chrome | 13 801 670-19 |
|  | Chrome | 13 801 670-00 |
|  | Brushed Platinum | 13 801 670-06 |
|  | Brushed Light Gold | 13 801 670-27 |
|  | Matte Black | 13 801 670-33 |
|  | Brushed Chrome | 13 801 670-93 |
|  | Brushed Dark Platinum | 13 801 670-99 |

Recommended miscellaneous



- Concealed wall elbow -

•min. recess depth 90 mm

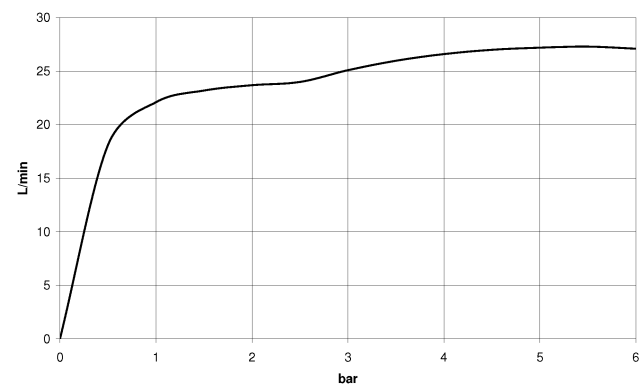
•max. recess depth 163 mm

35 085 970 90

mm [inches]



Flow rate chart



Codes & Standards

| | | | |
|----------------|------|---------------------------|--------------------------------|
| ASME A112.18.1 | cUPC | Scottish Water Byelaws | UK Water Supply Regulations |
|----------------|------|---------------------------|--------------------------------|



IMO Bath spout for wall mounting - Dark Chrome

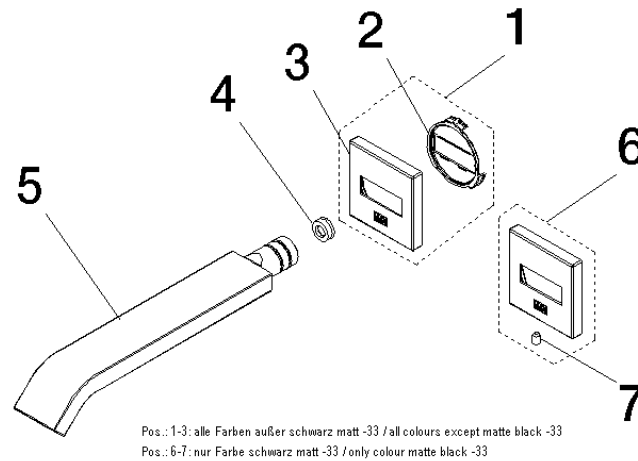
IMO

13 801 670 Product version from 4/1/2024

Certificates and sustainability

IAPMO_4976

WRAS_2005



Spare parts list

| No. | Item Number | Name | Quantity used | Delivery time |
|--|--------------------|--------------|---------------|---------------|
| 1 | 90 27 67 008 00-19 | rosette | 1.00 | - |
| Spare part can no longer be ordered, please order the replacement item | | | | |
| 4 | 09 23 01 057 90 | flow reducer | 1.00 | 2 |
| 2 | 09 18 40 139 90 | base | 1.00 | 2 |
| 6 | 90 27 97 050 00-33 | rosette | 1.00 | - |
| Spare part can no longer be ordered, please order the replacement item | | | | |
| 5 | 04 28 22 241 00-19 | spout | 1.00 | 60 |
| 3 | 09 27 67 008-19 | rosette | 1.00 | 60 |
| 7 | 09 31 11 058 90 | pin | 1.00 | 2 |