

TARA Bath spout for wall mounting - Brushed Champagne (22kt Gold)

13 801 892 Product version from 4/1/2024



- 200mm projection
- circular normal flow
- rosette Ø 55 mm
- hole diameter 37 mm
- 1/2" connection
- max. flow 29 l/min at 3 bar flow pressure
- WRAS

	Brushed Champagne (22kt Gold)	13 801 892-46
	Chrome	13 801 892-00
	Brushed Platinum	13 801 892-06
	Platinum	13 801 892-08
	Dark Chrome	13 801 892-19
	Brushed Light Gold	13 801 892-27
	Brushed Durabrass (23kt Gold)	13 801 892-28
	Matte Black	13 801 892-33
	Brushed Bronze	13 801 892-42
	Champagne (22kt Gold)	13 801 892-47
	Brushed Chrome	13 801 892-93
	Brushed Dark Platinum	13 801 892-99

Recommended miscellaneous



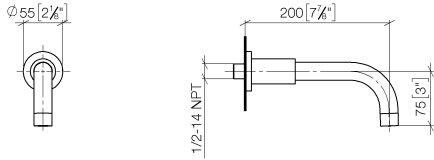
- Concealed wall elbow -**
- max. recess depth mm
 - min. recess depth mm

35 085 970 90

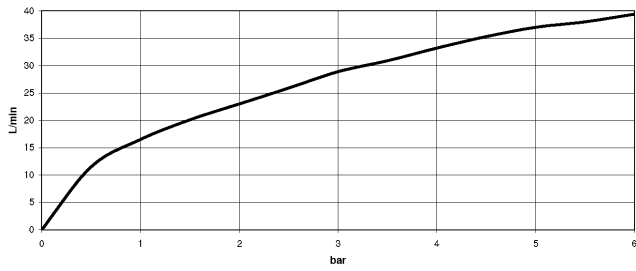
TARA Bath spout for wall mounting - Brushed Champagne (22kt Gold)

13 801 892 Product version from 4/1/2024

mm [inches]



Flow rate chart



Codes & Standards

ASME A112.18.1 cUPC DIN 4109 ISO 3822

Scottish Water Byelaws UK Water Supply Regulations Ü-Zeichen



TARA Bath spout for wall mounting - Brushed Champagne (22kt Gold)

13 801 892 Product version from 4/1/2024

Certificates

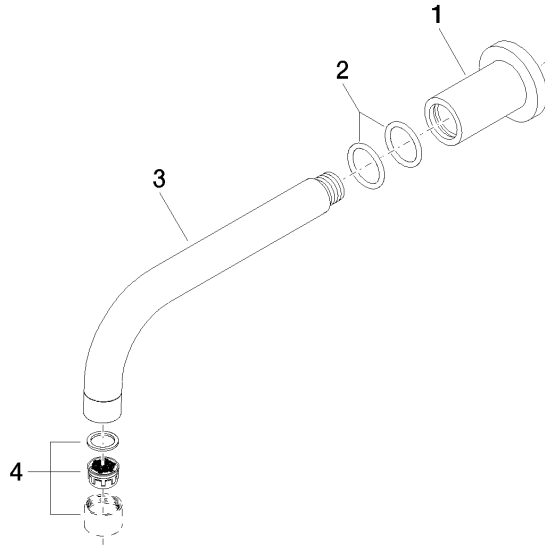
LGA_18

IAPMO_4976

WRAS_240602

TARA Bath spout for wall mounting - Brushed Champagne (22kt Gold)

13 801 892 Product version from 4/1/2024



Spare parts list

No.	Item Number	Name	Quantity used	Delivery time
1	09 27 89 009-46	rosette	1	30
2	90 14 10 025 00 90	seal	2	2
3	04 28 22 198 20-46	spout	1	30
4	90 23 01 024 00-46	aerator	1	30