

MADISON Deck valve clockwise closing cold or hot - Chrome

20 000 360

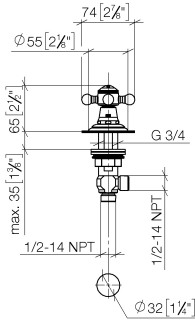


- hole diameter 32 mm
- rosette Ø 55 mm
- supplied with porcelain inserts for both HOT and COLD
- WRAS

MADISON Deck valve clockwise closing cold or hot - Chrome

20 000 360

mm [inches]



Flow rate chart



Codes & Standards

Scottish Water
Byelaws

UK Water Supply
Regulations



MADISON Deck valve clockwise closing cold or hot - Chrome

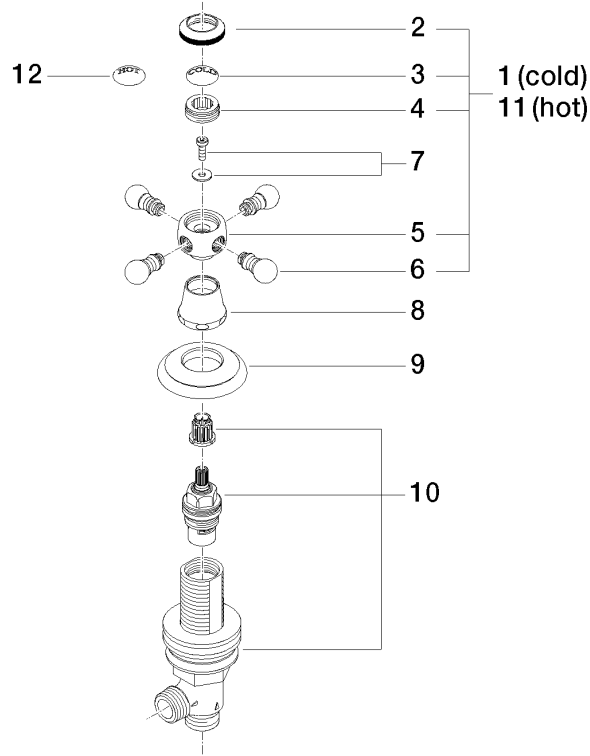
20 000 360

Certificates

WRAS_1810

MADISON Deck valve clockwise closing cold or hot - Chrome

20 000 360



Spare parts list

No.	Item Number	Name	Quantity used	Delivery time
1	04 20 36 002 06-00	handle (cold)	1	10
2	09 20 36 005-00	handle	1	10
3	09 26 01 010 90	accessories	1	2
4	09 20 83 006 90	handle	1	2
5	09 20 36 002-00	handle	1	10
6	09 20 36 004-00	handle	4	10
7	04 30 30 029 00 90	fixing set	1	2
8	09 21 02 046-00	cover	1	10
9	09 27 35 001-00	rosette	1	10
10	90 17 11 040 31 90	side panel	1	2
11	04 20 36 002 07-00	handle (hot)	1	10
12	09 26 01 011 90	accessories	1	2