



## SYMETRICS Deck valve anti-clockwise closing cold or hot - Brushed Platinum

---

20 000 980 Product version from 4/30/2013

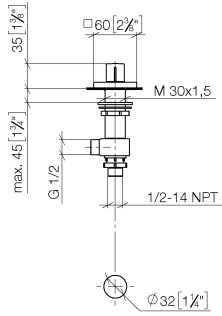
- hole diameter valve 32 mm
- rosette 60 x 60 mm



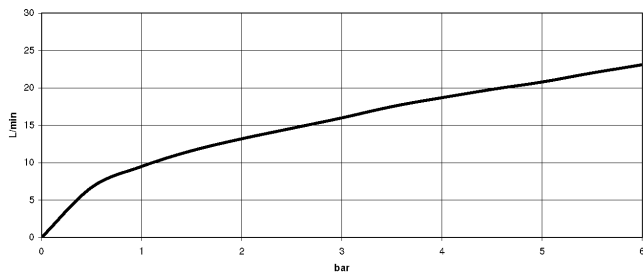
**SYMETRICS Deck valve anti-clockwise closing cold or hot - Brushed Platinum**

20 000 980 Product version from 4/30/2013

mm [inches]



**Flow rate chart**



**Codes & Standards**

ASME A112.18.1

cUPC

EN 200

NSF372

**VA-Zeichen**



## SYMETRICS Deck valve anti-clockwise closing cold or hot - Brushed Platinum

---

20 000 980 Product version from 4/30/2013

### Certificates

---

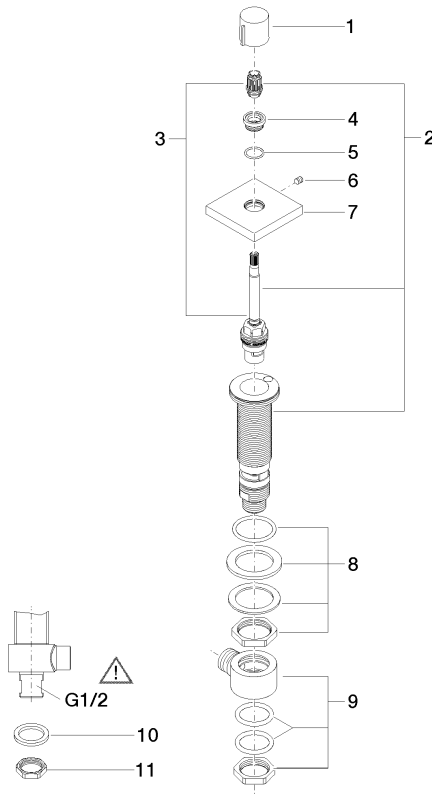
ETA\_18

IAPMO\_4976

IAPMO\_6

**SYMETRICS Deck valve anti-clockwise closing cold or hot - Brushed Platinum**

20 000 980 Product version from 4/30/2013



**Spare parts list**

| No. | Item Number        | Name        | Quantity used | Delivery time |
|-----|--------------------|-------------|---------------|---------------|
| 1   | 09 20 98 001-06    | handle      | 1             | 10            |
| 2   | 90 17 11 045 04 90 | side panel  | 1             | 2             |
| 3   | 90 90 03 204 00 90 | top         | 1             | 2             |
| 4   | 09 12 12 043-06    | base        | 1             | 10            |
| 5   | 09 14 10 017 90    | seal        | 1             | 2             |
| 6   | 90 31 11 004 00 90 | pin         | 1             | 2             |
| 7   | 09 27 98 014-06    | rosette     | 1             | 10            |
| 8   | 04 23 10 032 78 90 | fixing set  | 1             | 2             |
| 9   | 04 17 11 023 10 90 | distributor | 1             | 2             |
| 10  | 09 30 11 059 90    | disc        | 1             | 2             |
| 11  | 09 23 10 012 90    | nut         | 1             | 2             |