

**MADISON Three-hole basin mixer with pop-up waste - Brushed Durabronz  
(23kt Gold)**







MADISON

20 700 360



- 135mm projection
- fixed spout
- circular, air-enriched flow
- height of mixer 72 mm
- height up to aerator 40 mm
- hole diameter valve 32 mm
- hole diameter spout 35 mm
- without rosette
- 2x 1/2" x 1/2" high pressure hose
- max. flow 7 l/min
- lead-free
- This product can help a building meet the requirements of Green Building Rating Systems, e.g. LEED®, BREEAM®, DGNB
- WRAS 1512009

Only suitable for basins with an overflow.

	Brushed Durabronz (23kt Gold)	20 700 360-28
	Chrome	20 700 360-00
	Brushed Platinum	20 700 360-06
	Platinum	20 700 360-08
	Durabronz (23kt Gold)	20 700 360-09
	Brushed Dark Platinum	20 700 360-99

**Recommended miscellaneous**



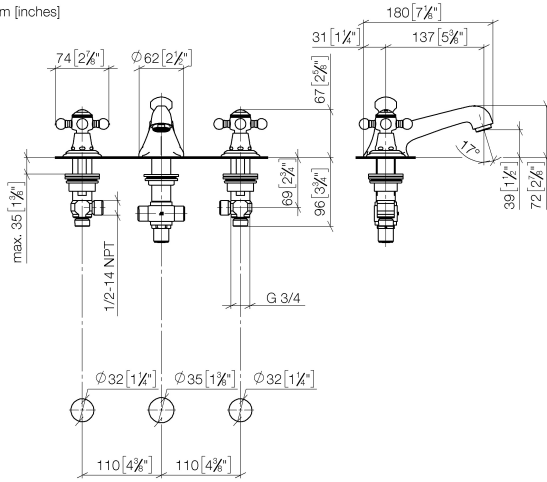
- High pressure hoses -** 12 506 970 90
- 2x 3/8" x 1/2" x 500mm high pressure hose



**MADISON Three-hole basin mixer with pop-up waste - Brushed Durabronz (23kt Gold)**

MADISON

20 700 360  
mm [inches]



**Flow rate chart**



**Codes & Standards**

DIN 4109

EN 200

Executive Order  
no. 1007

ISO 3822

Scottish Water  
Byelaws

UK Water Supply  
Regulations

Ü-Zeichen

VA-Zeichen



MADISON Three-hole basin mixer with pop-up waste - Brushed Durabross  
(23kt Gold)

MADISON

---

20 700 360  
Certificates

---

ETA\_17

WRAS\_1512

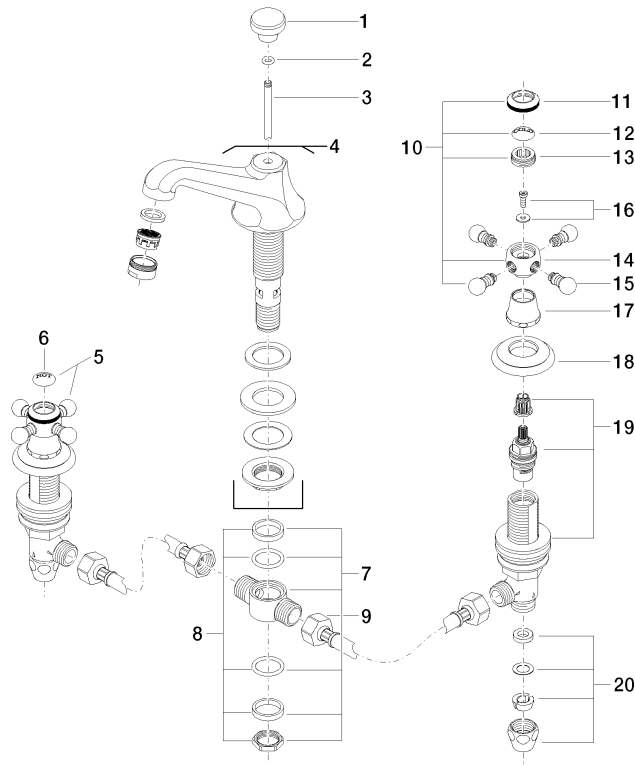
GDV\_0400

LGA\_8

WRAS\_240602

20 700 360

**Product version from 7/31/2009**



21 ——— Ablaufgarnitur 04.11.01.001.00.FF



MADISON Three-hole basin mixer with pop-up waste - Brushed Durabronze  
(23kt Gold)

MADISON

20 700 360

**Spare parts list**

**Product version from 7/31/2009**

No.	Item Number	Name	Quantity used	Delivery time
	09 20 36 030-28	handle	37	20