

## LULU Three-hole basin mixer with pop-up waste - Chrome

LULU

20 713 710 Product version from 8/31/2015 to 7/22/2021



- 155mm projection
- fixed spout
- circular, air-enriched flow
- height of mixer 114 mm
- height up to aerator 90 mm
- hole diameter valve 32 mm
- hole diameter spout 35 mm
- rosette 47 x 55 mm
- 2x screw-in M 8 x 1 pressure hose, leak-tested
- max. flow 7 l/min
- lead-free
- WRAS
- This product can help a building meet the requirements of Green Building Rating Systems, e.g. LEED®, BREEAM®, DGNB

Only suitable for basins with an overflow.



Chrome

20 713 710-00



Brushed Platinum

20 713 710-06

### Recommended miscellaneous



#### High pressure hoses -

12 506 970 90

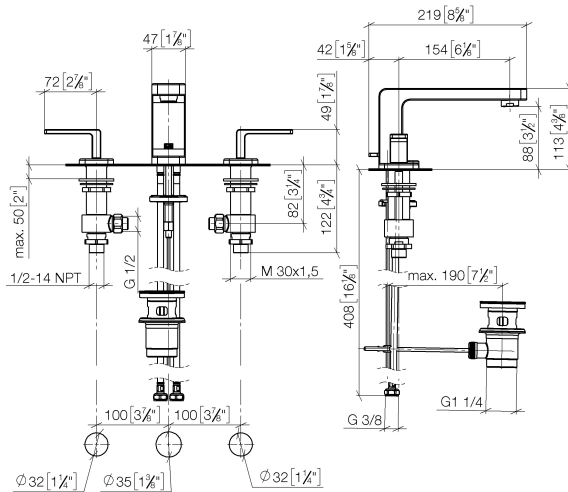
- 2x 3/8" x 1/2" x 500mm high pressure hose

## LULU Three-hole basin mixer with pop-up waste - Chrome

LULU

20 713 710 Product version from 8/31/2015 to 7/22/2021

mm [inches]



### Flow rate chart



### Codes & Standards

DIN 4109

ISO 3822

Scottish Water  
Byelaws

UK Water Supply  
Regulations

Ü-Zeichen



## LULU Three-hole basin mixer with pop-up waste - Chrome

---

LULU

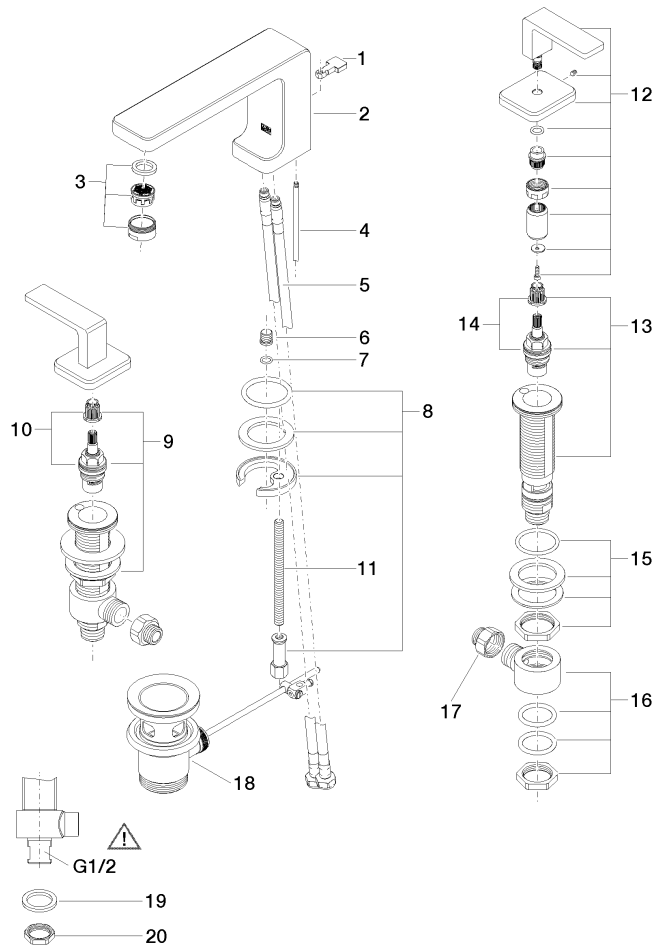
20 713 710 Product version from 8/31/2015 to 7/22/2021

### Certificates and sustainability

---

LGA\_19

WRAS\_250402



## Spare parts list

No.	Item Number	Name	Quantity used	Delivery time
	8 04 30 11 038 75 90	fixing set	1.00	2
	11 09 31 11 012 90	pin	1.00	2
	1 09 20 71 033-00	handle	1.00	10
	15 04 23 10 032 78 90	fixing set	2.00	2
	12 90 20 71 046 01-00	handle	2.00	10
	2 09 11 71 095 10-00	spout	1.00	10
	10 90 90 03 153 00 90	top	1.00	2
	9 04 17 11 058 53 90	side panel	1.00	2
	13 04 17 11 058 52 90	side panel	1.00	2
	3 90 23 01 118 01-00	aerator	1.00	10
	6 09 31 20 065 90	plug	1.00	2
	4 09 31 09 080-00	pull-rod	1.00	10
	14 90 90 03 152 00 90	top	1.00	2
	16 04 17 11 023 10 90	distributor	2.00	2
	5 04 30 04 100 00 90	hose	2.00	2
	19 09 30 11 059 90	disc	2.00	2
	20 09 23 10 012 90	nut	2.00	2
	7 90 14 10 060 00 90	seal	1.00	2
	17 09 24 03 185-00	nipple	2.00	10
	18 90 11 01 001 00-00	pop-up waste	1.00	10