







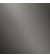


- spray flow
- automatic diverter for spout/Profi spray set
- height of mixer 665 mm
- individual rosette diameter 55mm
- profi spray hole diameter 30mm
- sprayface with anti-scaling system
- lead-free

Can only be combined with 32815682, 33826861, 32815861, 33836888, 32816888, 20816892, 33836875, 32815875.

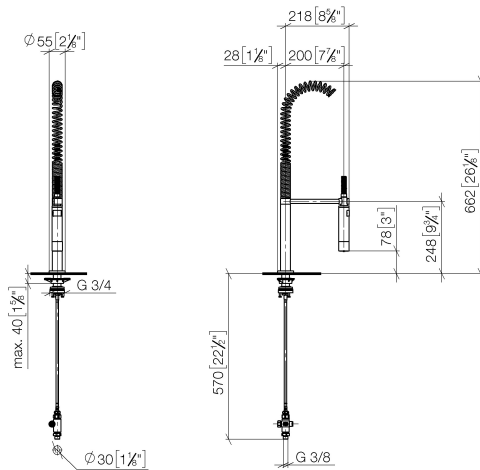
Intrinsic protection against back flow.

Operating unit can be positioned freely.

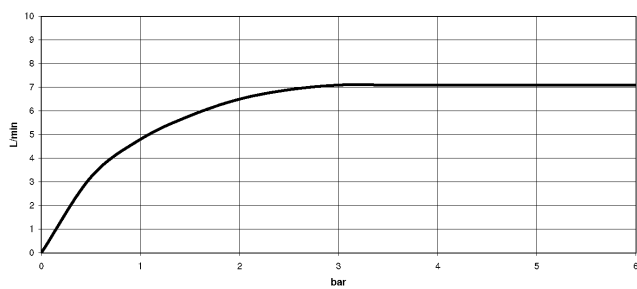
| | | |
|---|-----------------------|---------------|
|  | Platinum | 27 799 970-08 |
|  | Chrome | 27 799 970-00 |
|  | Brushed Platinum | 27 799 970-06 |
|  | Dark Chrome | 27 799 970-19 |
|  | Brushed Bronze | 27 799 970-42 |
|  | Brushed Chrome | 27 799 970-93 |
|  | Brushed Dark Platinum | 27 799 970-99 |

27 799 970 Product version from 10/1/2024

mm [inches]
1:10



Flow rate chart



Codes & Standards

DIN 4109

EN 1717

ISO 3822

NSF372

NSF61

Ü-Zeichen



Profi spray set - Platinum

SERIES-VARIOUS

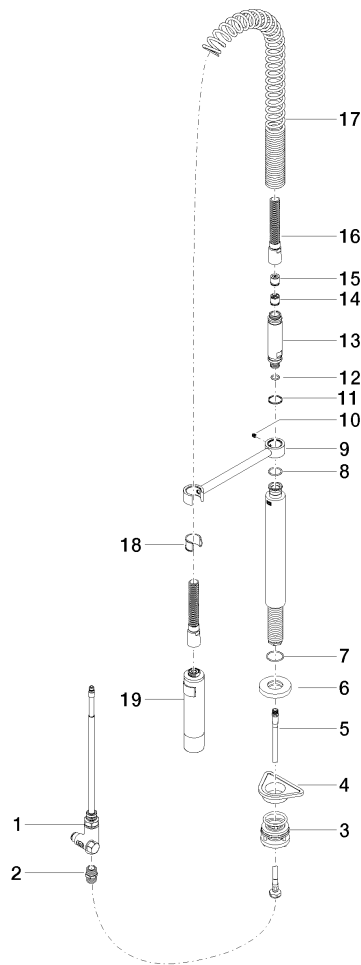
27 799 970 Product version from 10/1/2024

Certificates and sustainability

IAPMO_6397 LGA_38 Belgaqua_24-005-2 IAPMO_N-4976

27 799 970 Product version from 10/1/2024

Parts for other
finishes can be found
here: [Chrome](#)





Profi spray set - Platinum

SERIES-VARIOUS

27 799 970 Product version from 10/1/2024

Spare parts list

| No. | Item Number | Name | Quantity used | Delivery time |
|--|-----------------------|---------------------|---------------|---------------|
| | 2 90 24 03 250 00 90 | nipple | 1.00 | 2 |
| | 9 04 17 20 014 00-08 | holder | 1.00 | 40 |
| | 5 04 30 04 104 00 90 | hose | 1.00 | 2 |
| | 8 09 14 10 031 90 | seal | 1.00 | 2 |
| | 7 09 14 10 120 90 | seal | 1.00 | 2 |
| | 12 09 14 10 003 90 | seal | 1.00 | 2 |
| | 6 90 27 86 000 00-08 | rosette | 1.00 | - |
| Spare part can no longer be ordered, please order the replacement item | | | | |
| | 13 09 30 01 067 10-08 | adaptor | 1.00 | 40 |
| | 14 90 23 01 141 00 90 | back-flow preventer | 1.00 | 2 |
| | 3 04 23 10 004 03 90 | fixing set | 1.00 | 2 |
| | 18 90 18 40 035 00 90 | sleeve | 1.00 | 2 |
| | 4 09 18 40 090 90 | sleeve | 1.00 | 2 |
| | 10 09 31 11 049 90 | pin | 1.00 | 2 |
| | 11 09 14 15 012 90 | ring | 1.00 | 2 |
| | 15 09 23 01 046 90 | back-flow preventer | 1.00 | 2 |
| | 1 90 17 09 046 12 90 | diverter | 1.00 | 2 |
| | 19 04 12 11 094 10-08 | shower | 1.00 | 40 |
| | 16 90 30 02 065 00-08 | hose | 1.00 | - |
| Spare part can no longer be ordered, please order the replacement item | | | | |
| | 17 09 16 02 034 90 | spring | 1.00 | 2 |