

Profi spray set - Brushed Dark Platinum

SERIES-VARIOUS

27 799 970

Product version from 10/1/2024

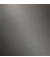








- spray flow
- automatic diverter for spout/Profi spray set
- height of mixer 665 mm
- individual rosette diameter 55mm
- profi spray hole diameter 30mm
- sprayface with anti-scaling system
- lead-free

Can only be combined with 32815682, 33826861, 32815861, 33836888, 32816888, 20816892, 33836875, 32815875.

Intrinsic protection against back flow.

Operating unit can be positioned freely.

	Brushed Dark Platinum	27 799 970-99
	Chrome	27 799 970-00
	Brushed Platinum	27 799 970-06
	Platinum	27 799 970-08
	Dark Chrome	27 799 970-19
	Brushed Bronze	27 799 970-42
	Brushed Chrome	27 799 970-93

27 799 970 Product version from 10/1/2024

mm [inches]
1:10



Flow rate chart



Codes & Standards

DIN 4109

EN 1717

ISO 3822

NSF372

NSF61

Ü-Zeichen



Profi spray set - Brushed Dark Platinum

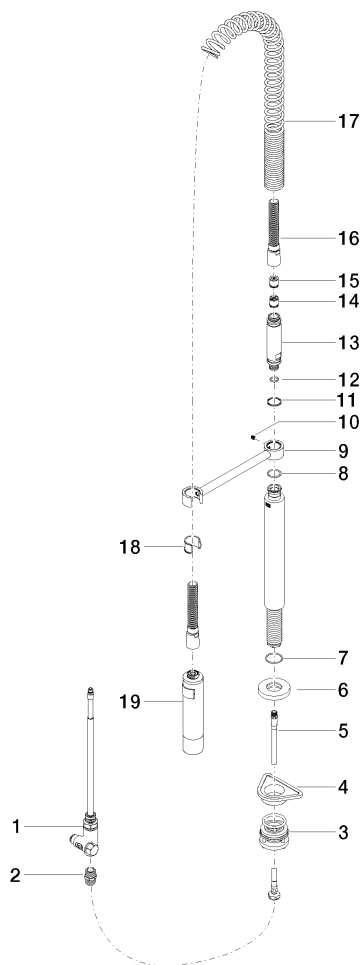
SERIES-VARIOUS

27 799 970 Product version from 10/1/2024

Certificates and sustainability

IAPMO_6397 LGA_38 Belgaqua_24-005-2 IAPMO_N-4976

Parts for other finishes can be found here: [Chrome](#)



Spare parts list

No.	Item Number	Name	Quantity used	Delivery time
	15 09 23 01 046 90	back-flow preventer	1.00	2
	4 09 18 40 090 90	sleeve	1.00	2
	9 04 17 20 014 00-99	holder	1.00	60
	7 09 14 10 120 90	seal	1.00	2
	6 90 27 86 000 00-99	rosette	1.00	-
Spare part can no longer be ordered, please order the replacement item				
	1 90 17 09 046 12 90	diverter	1.00	2
	16 90 30 02 065 00-99	hose	1.00	20
	18 90 18 40 035 00 90	sleeve	1.00	2
	3 04 23 10 004 03 90	fixing set	1.00	2
	14 90 23 01 141 00 90	back-flow preventer	1.00	2
	5 04 30 04 104 00 90	hose	1.00	2
	2 90 24 03 250 00 90	nipple	1.00	2
	8 09 14 10 031 90	seal	1.00	2
	13 09 30 01 067 10-99	adaptor	1.00	60
	10 09 31 11 049 90	pin	1.00	2
	17 09 16 02 034 90	spring	1.00	2
	19 04 12 11 094 10-99	shower	1.00	60
	11 09 14 15 012 90	ring	1.00	2
	12 09 14 10 003 90	seal	1.00	2