

Shower head - Brushed Light Gold

SERIES SPECIFIC

28 504 670 Product version from 6/30/2015



- 180-210mm projection
- ball-joint pivotable through 30°
- PURIFY RAIN, max. flow rate 7 l/min (at 3 bar)
- with anti-scale system
- spray head Ø 100mm
- rosette 60 x 60 mm
- 1/2" connection
- Function from: 6 l/min

	Brushed Light Gold	28 504 670-27
	Chrome	28 504 670-00
	Brushed Platinum	28 504 670-06
	Platinum	28 504 670-08
	Dark Chrome	28 504 670-19
	Brushed Durabronze (23kt Gold)	28 504 670-28
	Matte Black	28 504 670-33
	Brushed Champagne (22kt Gold)	28 504 670-46
	Champagne (22kt Gold)	28 504 670-47
	Brushed Chrome	28 504 670-93
	Brushed Dark Platinum	28 504 670-99

Recommended miscellaneous



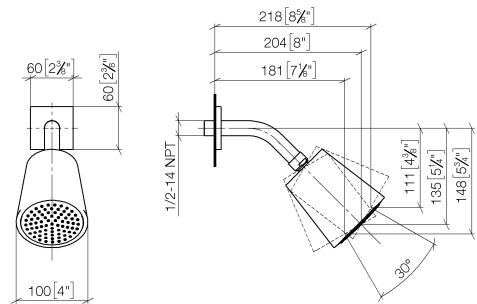
Concealed wall elbow -

35 085 970 90

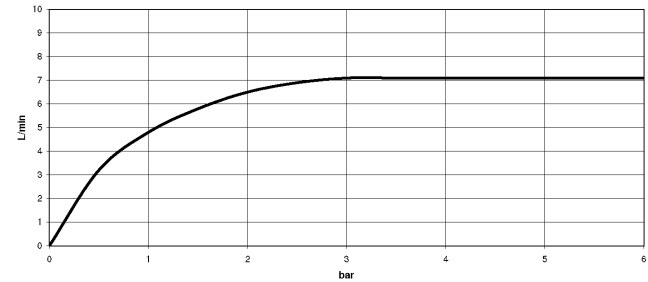
- min. recess depth 90 mm
- max. recess depth 163 mm

28 504 670 Product version from 6/30/2015

mm [inches]



Flow rate chart



Codes & Standards

DIN 4109 ISO 3822 Ü-Zeichen



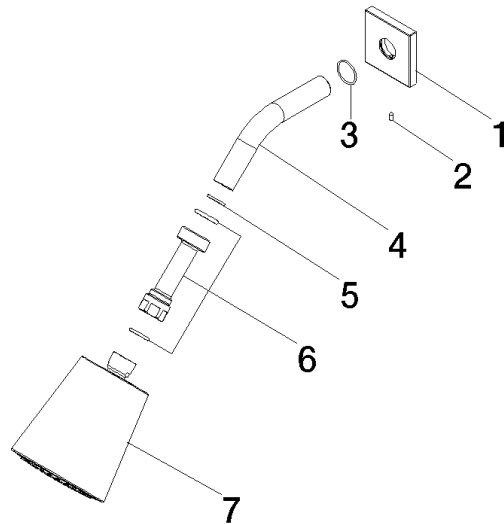
Shower head - Brushed Light Gold

SERIES SPECIFIC

28 504 670 Product version from 6/30/2015

Certificates and sustainability

LGA_19



Spare parts list

No.	Item Number	Name	Quantity used	Delivery time
4	09 11 03 011-27	connection	1.00	60
5	90 14 20 002 00 90	seal	1.00	2
2	09 31 11 048 90	pin	1.00	2
1	09 27 98 003-27	rosette	1.00	60
3	90 14 10 026 00 90	seal	1.00	2
6	90 24 05 017 00 90	nipple	1.00	2
7	90 12 05 054 01-27	shower	1.00	30