

MADISON Body spray without volume control FlowReduce - Chrome

28 518 360



- spray head Ø 55mm
- ball-joint pivotable through 25° (in any direction)
- rain flow
- rosette Ø 55 mm
- 1/2" connection
- max. flow 5 l/min
- This product can help a building meet the requirements of Green Building Rating Systems, e.g. LEED®, BREEAM®, DGNB
- WRAS

Recommended miscellaneous



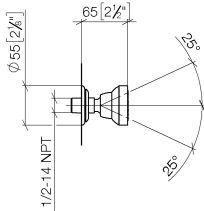
- Concealed wall elbow -**
- max. recess depth mm
 - min. recess depth mm

35 085 970 90

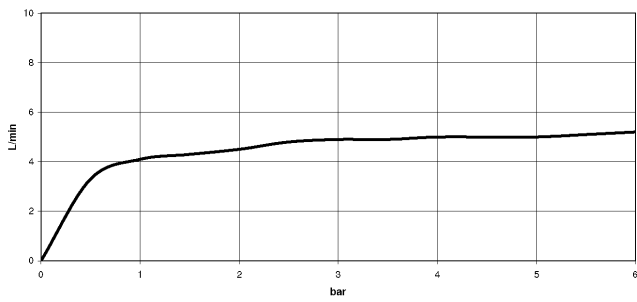
MADISON Body spray without volume control FlowReduce - Chrome

28 518 360

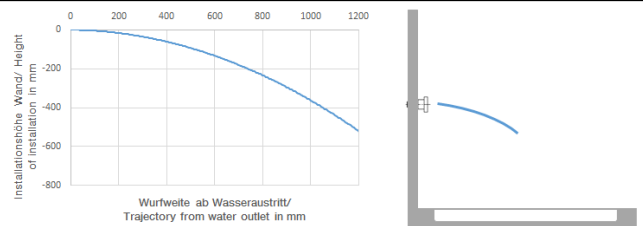
mm [inches]



Flow rate chart



Trajectory diagram



Codes & Standards

DIN 4109

ISO 3822

Scottish Water
Byelaws

UK Water Supply
Regulations

Ü-Zeichen



MADISON Body spray without volume control FlowReduce - Chrome

28 518 360

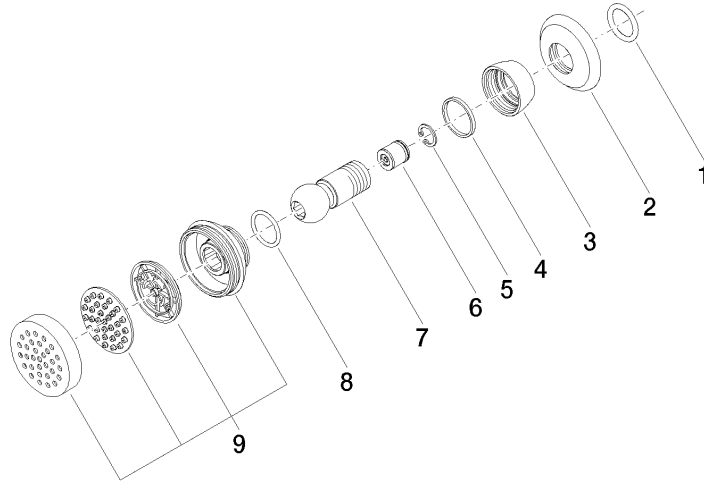
Certificates

LGA_38

WRAS_240602

MADISON Body spray without volume control FlowReduce - Chrome

28 518 360



Spare parts list

No.	Item Number	Name	Quantity used	Delivery time
1	90 14 10 026 00 90	seal	1	2
2	09 27 35 003-00	rosette	1	10
3	09 23 30 027-00	nut	1	10
4	09 14 15 010 90	ring	1	2
5	09 16 01 014 90	ring	1	2
6	09 23 01 048 90	back-flow preventer	1	2
7	09 21 40 016-00	connection	1	10
8	09 14 10 015 90	seal	1	2
9	90 12 05 028 00-00	casing (completely)	1	10