

IMO Single-lever basin mixer with pop-up waste - Brushed Platinum

IMO








33 500 671

Product version from 4/1/2024



- 125mm projection
- fixed spout
- rectangular, air-enriched flow
- height of mixer 138 mm
- height up to aerator 71 mm
- hole diameter 35 mm
- 2x screw-in M 10 x 1 pressure hose, leak-tested
- max. flow 4.6 l/min
- lead-free
- This product can help a building meet the requirements of Green Building Rating Systems, e.g. LEED®, BREEAM®, DGNB

Only suitable for basins with an overflow.

	Brushed Platinum	33 500 671-06
	Chrome	33 500 671-00
	Dark Chrome	33 500 671-19
	Brushed Light Gold	33 500 671-27
	Matte Black	33 500 671-33
	Brushed Chrome	33 500 671-93
	Brushed Dark Platinum	33 500 671-99





## IMO Single-lever basin mixer with pop-up waste - Brushed Platinum

IMO

33 500 671 Product version from 4/1/2024

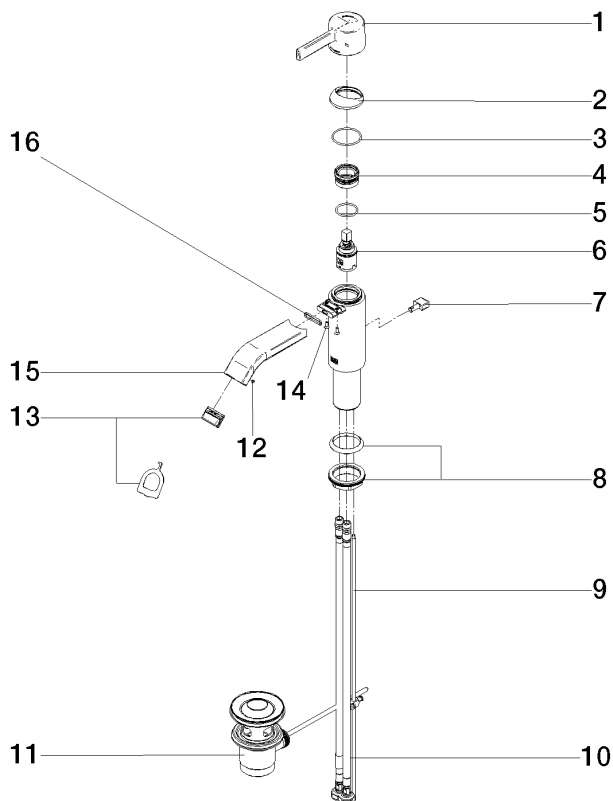
Certificates and sustainability

LGA\_19

WRAS\_250102

33 500 671 Product version from 4/1/2024

Parts for other  
finishes can be found  
here: [Chrome](#)



## Spare parts list

No.	Item Number	Name	Quantity used	Delivery time
	16 09 14 10 017 90	seal	1.00	2
	4 90 23 10 146 00 90	nut	1.00	2
	5 09 14 10 112 90	seal	1.00	2
	13 90 29 03 134 00 90	aerator	1.00	2
	11 90 11 01 001 00-06	pop-up waste	1.00	10
	15 90 28 22 440 00-06	spout	1.00	10
	1 90 20 67 019 00-06	handle	1.00	10
	12 09 31 11 006 90	pin	1.00	2
	7 09 20 67 002-06	handle	1.00	10
	8 04 23 10 044 07 90	fixing set	1.00	2
	3 09 14 10 102 90	seal	1.00	2
	10 04 30 04 104 00 90	hose	2.00	2
	9 09 31 09 080-06	pull-rod	1.00	10
	2 90 28 30 059 00-06	cover	1.00	-
Spare part can no longer be ordered, please order the replacement item				
	14 09 30 30 166 90	screw	2.00	2
	6 90 15 05 042 00 90	cartridge	1.00	2