

## TARA Single-lever basin mixer with pop-up waste - Champagne (22kt Gold)

TARA

33 500 882 Product version from 4/1/2024



- 137mm projection
- pivotable spout 360°
- circular, air-enriched flow
- height of mixer 295 mm
- height up to aerator 187 mm
- hole diameter 35 mm
- 2x screw-in M 8 x 1 pressure hose, leak-tested
- max. flow 5.7 l/min
- lead-free
- This product can help a building meet the requirements of Green Building Rating Systems, e.g. LEED®, BREEAM®, DGNB
- WRAS

Only suitable for basins with an overflow.

|   |                                |               |
|---|--------------------------------|---------------|
|    | Champagne (22kt Gold)          | 33 500 882-47 |
|    | Chrome                         | 33 500 882-00 |
|    | Brushed Platinum               | 33 500 882-06 |
|    | Platinum                       | 33 500 882-08 |
|    | Dark Chrome                    | 33 500 882-19 |
|    | Brushed Durabronze (23kt Gold) | 33 500 882-28 |
|    | Matte Black                    | 33 500 882-33 |
|    | Brushed Bronze                 | 33 500 882-42 |
|    | Brushed Champagne (22kt Gold)  | 33 500 882-46 |
|   | Brushed Chrome                 | 33 500 882-93 |
|  | Brushed Dark Platinum          | 33 500 882-99 |

33 500 882 Product version from 4/1/2024



### Flow rate chart



### Codes & Standards

DIN 4109

ISO 3822

Scottish Water  
Byelaws

UK Water Supply  
Regulations

### Ü-Zeichen



## TARA Single-lever basin mixer with pop-up waste - Champagne (22kt Gold)

---

TARA

33 500 882 Product version from 4/1/2024

### Certificates and sustainability

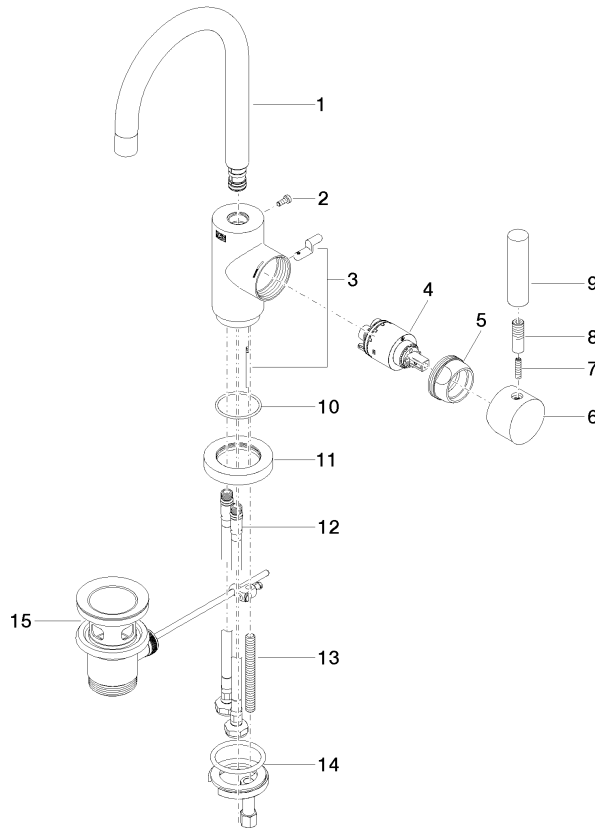
---

LGA\_38

WRAS\_2212

33 500 882 Product version from 4/1/2024

Parts for other finishes can be found here: [Chrome](#)



## Spare parts list

| No.  | Item Number        | Name         | Quantity used | Delivery time |
|--|--------------------|--------------|---------------|---------------|
| 7  | 09 31 11 010 90    | pin          | 1.00          | 2             |
| 13   | 09 31 11 011 90    | pin          | 1.00          | 2             |
| 4  | 90 15 05 065 00 90 | cartridge    | 1.00          | 2             |
| 5  | 09 24 04 107-47    | nut          | 1.00          | 60            |
| 2  | 09 30 30 054 90    | screw        | 1.00          | 2             |
| 3  | 04 20 16 031 80-47 | pull-rod     | 1.00          | 60            |
| 9  | 11 170 880-47      | handle       | 1.00          | -             |
| Spare part can no longer be ordered, please order the replacement item |                    |              |               |               |
| 1  | 90 28 22 371 00-47 | spout        | 1.00          | 30            |
| 10   | 09 14 10 034 90    | seal         | 1.00          | 2             |
| 12   | 04 30 04 104 00 90 | hose         | 2.00          | 2             |
| 14   | 04 30 11 038 00 90 | fixing set   | 1.00          | 2             |
| 6  | 90 20 88 040 00-47 | handle       | 1.00          | 30            |
| 11   | 09 28 10 055-47    | rosette      | 1.00          | 60            |
| 15   | 90 11 01 001 00-47 | pop-up waste | 1.00          | 30            |
| 8  | 90 24 04 048 00-47 | nipple       | 1.00          | 30            |