

## TARA Wall-mounted basin mixer without pop-up waste - Brushed Dark Brass

TARA

36 707 882 Product version from 4/1/2024

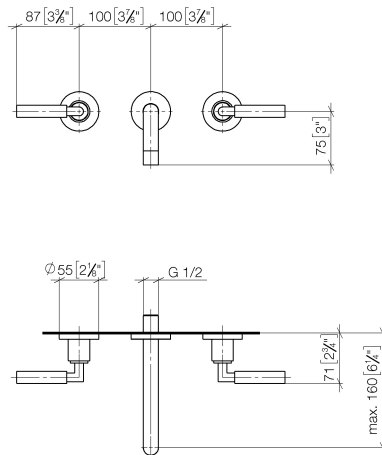


- 160mm projection
- fixed spout
- circular, air-enriched flow
- hole diameter valve 40 mm
- hole diameter spout 40 mm
- rosette Ø 55 mm
- max. flow 7 l/min
- lead-free
- WRAS
- This product can help a building meet the requirements of Green Building Rating Systems, e.g. LEED®, BREEAM®, DGNB

	Brushed Dark Brass	36 707 882-39
	Chrome	36 707 882-00
	Brushed Platinum	36 707 882-06
	Platinum	36 707 882-08
	Dark Chrome	36 707 882-19
	Brushed Durabronze (23kt Gold)	36 707 882-28
	Matte Black	36 707 882-33
	Brushed Bronze	36 707 882-42
	Brushed Champagne (22kt Gold)	36 707 882-46
	Champagne (22kt Gold)	36 707 882-47
	Brushed Chrome	36 707 882-93
	Brushed Dark Platinum	36 707 882-99

36 707 882 Product version from 4/1/2024

mm [inches]



### Flow rate chart



### Codes & Standards

DIN 4109

ISO 3822

Ü-Zeichen



## TARA Wall-mounted basin mixer without pop-up waste - Brushed Dark Brass

---

TARA

36 707 882 Product version from 4/1/2024

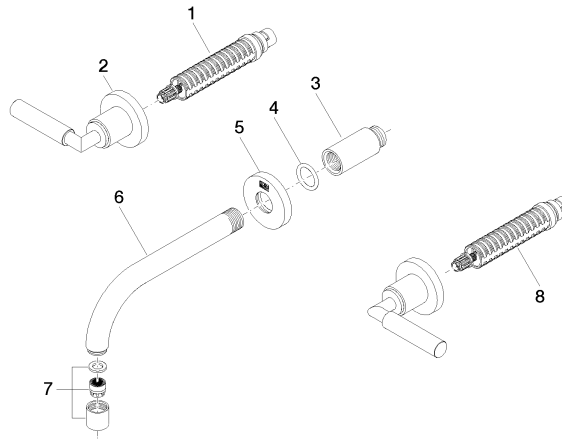
Certificates and sustainability

---

LGA\_18

36 707 882 Product version from 4/1/2024

Parts for other  
finishes can be found  
here: [Chrome](#)



## Spare parts list

No.	Item Number	Name	Quantity used	Delivery time
1	90 90 03 156 00 90	top	1.00	2
4	90 14 10 026 00 90	seal	1.00	2
5	09 27 22 503-39	rosette	1.00	60
8	90 90 03 157 00 90	top	1.00	2
7	90 23 01 019 00-39	aerator	1.00	30
2	36 310 882-39	TARA Wall valve - Brushed Dark Brass	2.00	30
3	09 24 03 081 10 90	extension	1.00	2
6	04 28 22 089 10-39	spout	1.00	60