
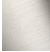






## MADISON Tissue holder without cover - Chrome

83 500 361 Product version from 7/3/2016



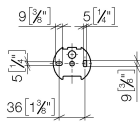
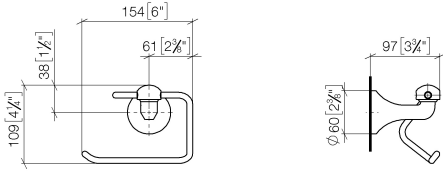
- width 145mm
- height 120 mm
- 95mm projection

	Chrome	83 500 361-00
	Brushed Platinum	83 500 361-06
	Platinum	83 500 361-08
	Durabass (23kt Gold)	83 500 361-09
	Brushed Durabass (23kt Gold)	83 500 361-28
	Brushed Dark Platinum	83 500 361-99

## MADISON Tissue holder without cover - Chrome

83 500 361 Product version from 7/3/2016

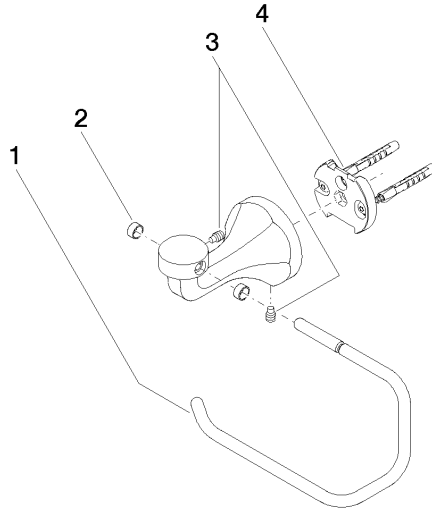
mm [inches]



**MADISON Tissue holder without cover - Chrome**

83 500 361 Product version from 7/3/2016

Parts for other finishes can be found here: Brushed Platinum



**Spare parts list**

No.	Item Number	Name	Quantity used	Delivery time
1	08 18 70 501-00	bow	1	10
2	08 18 40 505 90	sleeve	2	2
3	04 31 11 140 00 90	pin	2	2
4	05 17 97 507 00 90	fixing set	1	2